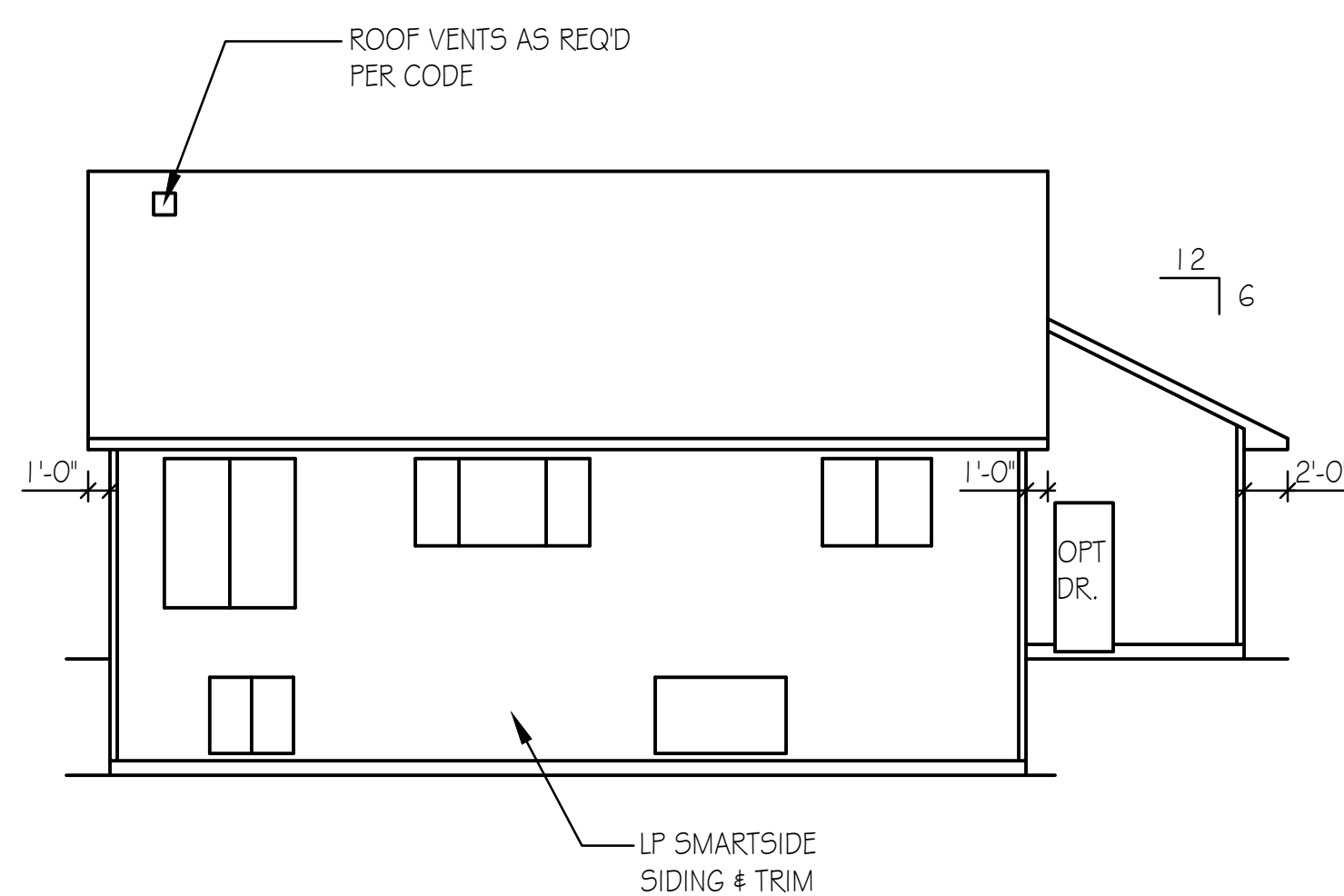


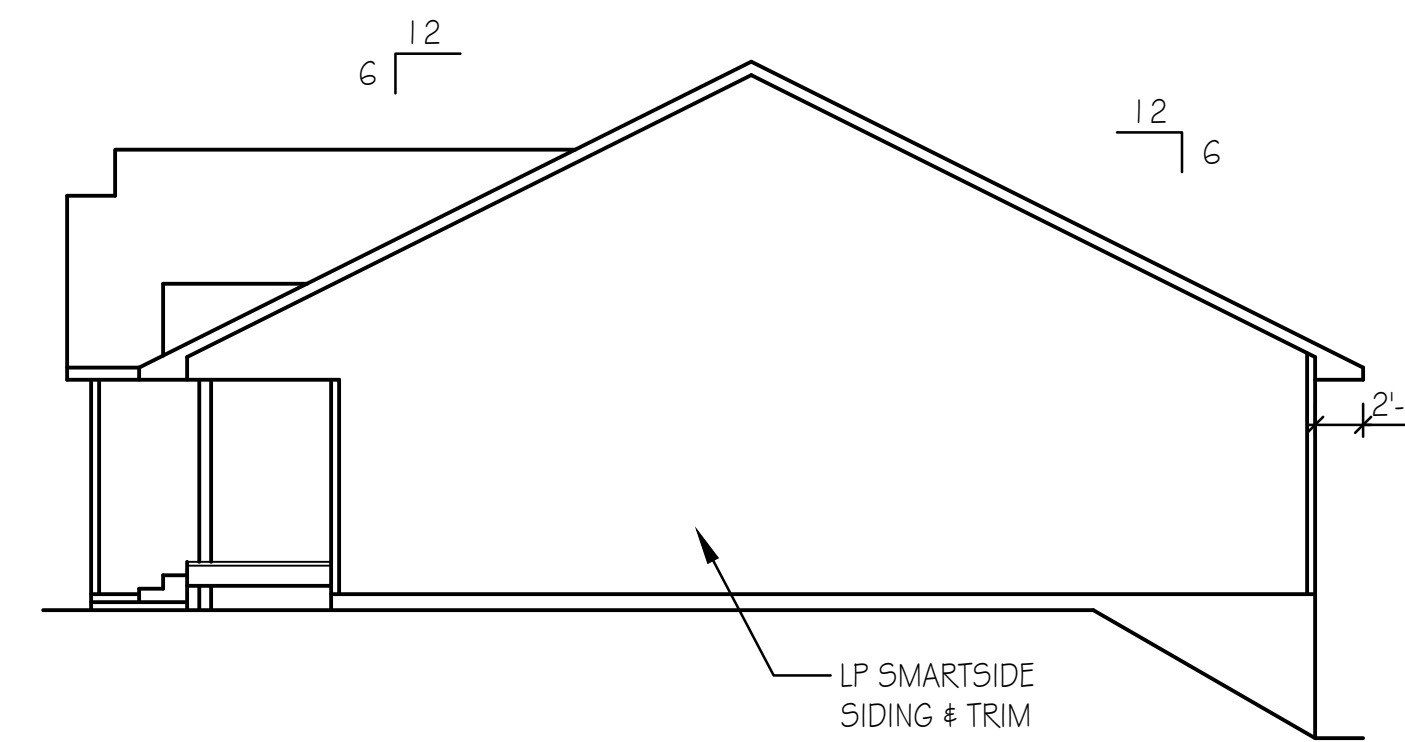
LEFT ELEVATION

1/8" = 1'-0"



REAR ELEVATION

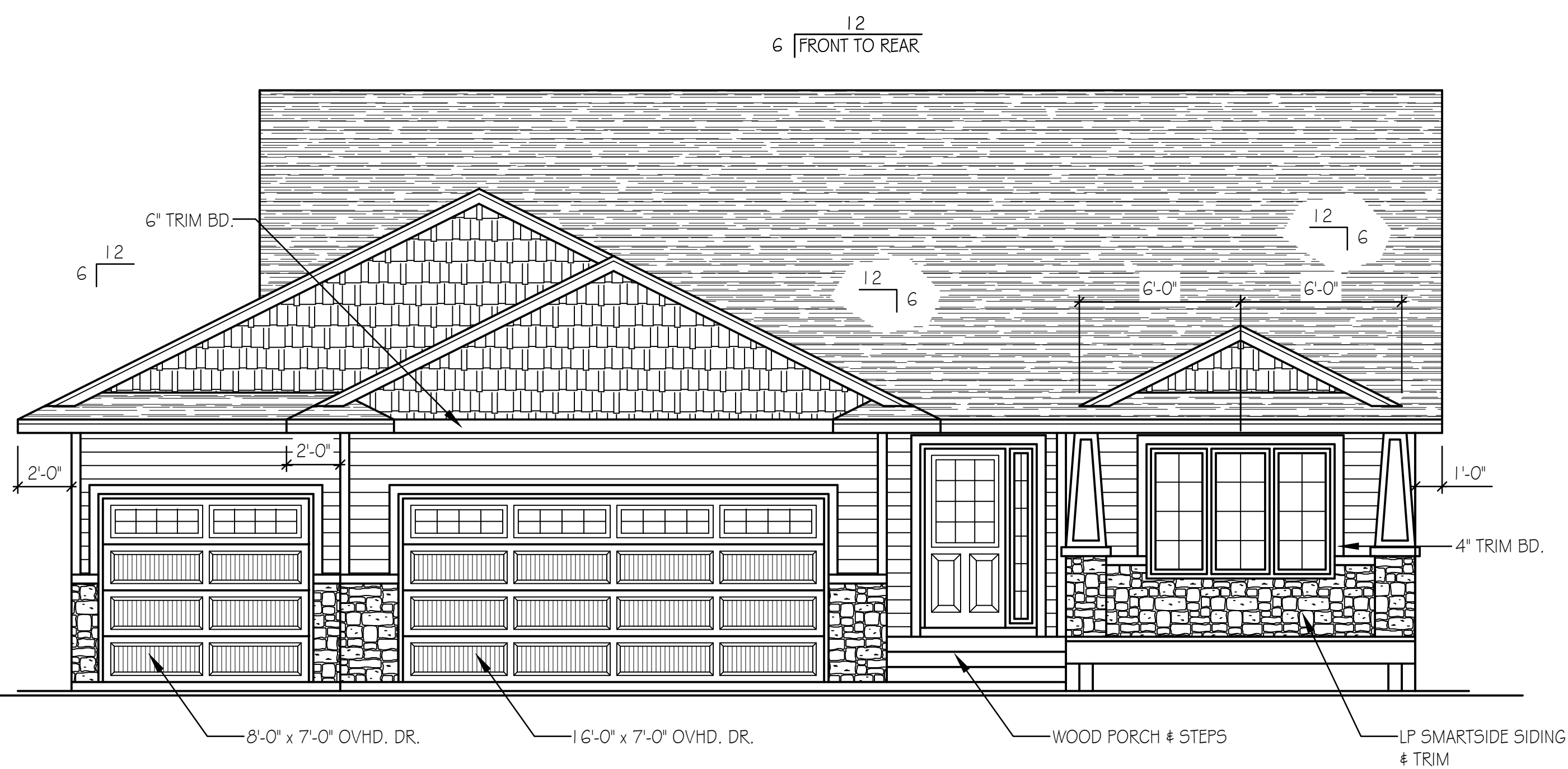
1/8" = 1'-0"



RIGHT ELEVATION

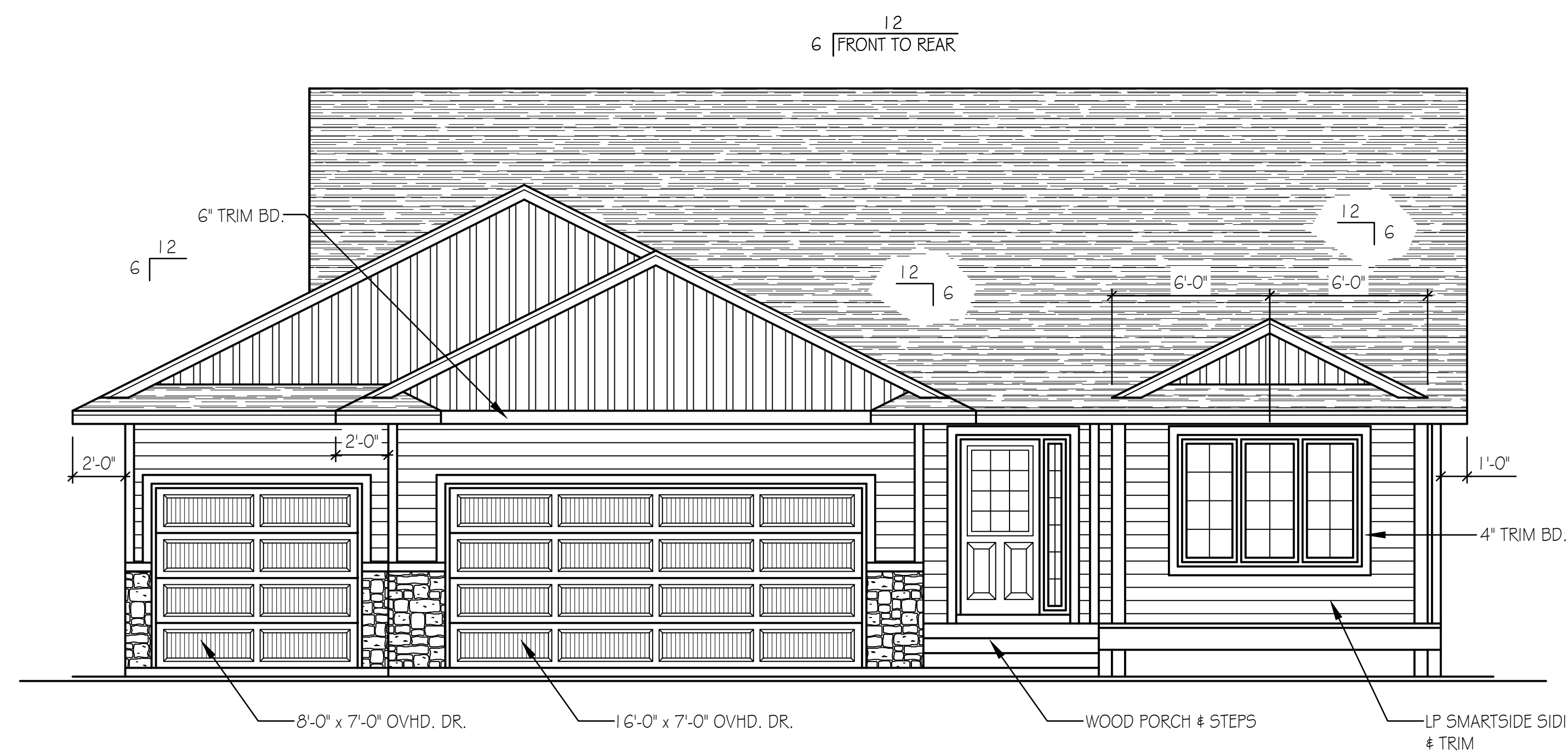
1/8" = 1'-0"

DISCLAIMER
 IN PREPARATION OF THIS PLAN EVERY ATTEMPT HAS BEEN MADE TO AVOID MISTAKES. DESIGNER CANNOT GUARANTEE AGAINST HUMAN ERROR. CONTRACTOR TO VERIFY ALL DIMENSIONS AND CONDITIONS AND BE RESPONSIBLE FOR THE SAME. THESE DESIGNS, CONCEPTS AND SPECIFICATIONS ARE INSTRUMENTS OF SERVICE AND AS SUCH REMAIN THE EXCLUSIVE PROPERTY OF COUNTRY LUMBER AND ARE NOT TO BE COPIED WITHOUT THE WRITTEN CONSENT OF COUNTRY LUMBER.



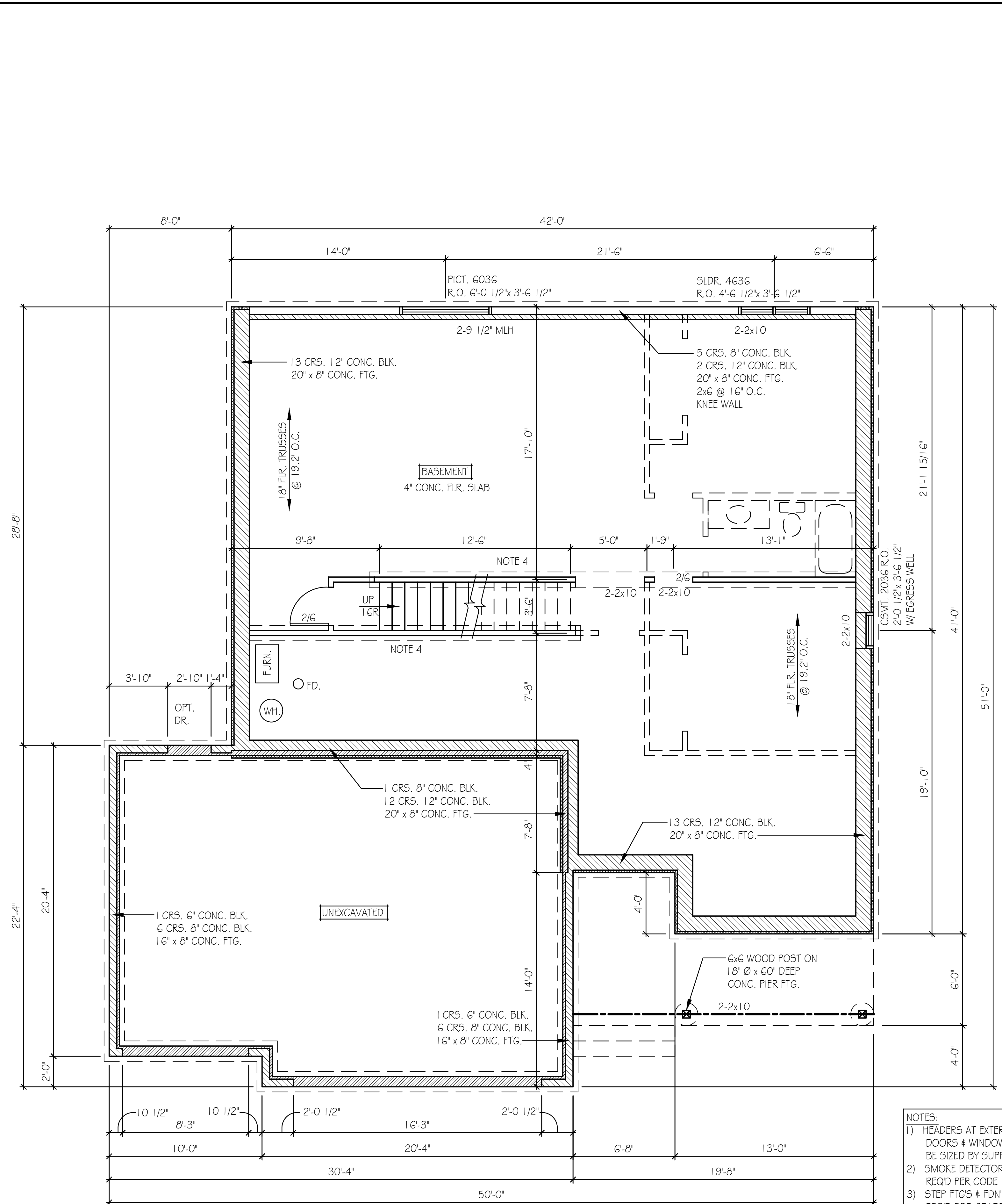
FRONT ELEVATION UPGRADE

1/4" = 1'-0"

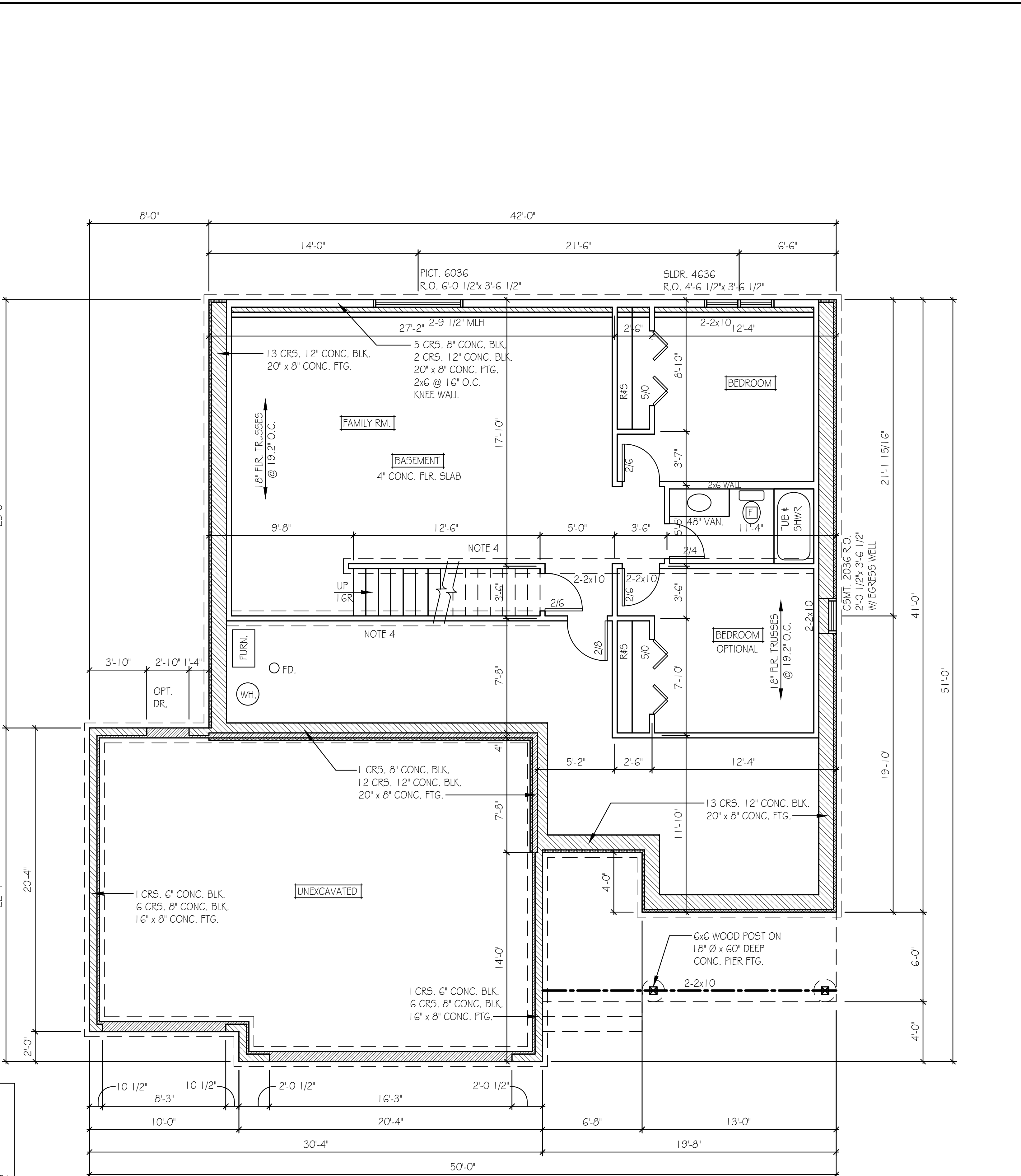


FRONT ELEVATION STANDARD

1/4" = 1'-0"



- NOTES:
- 1) HEADERS AT EXTERIOR DOORS & WINDOWS TO BE SIZED BY SUPPLIER
 - 2) SMOKE DETECTORS AS REQD PER CODE
 - 3) STEP FTGS & FDN'S AS REQD FOR GRADE - VERIFY W/ BUILDER
 - 4) 1 CR5, 4" CURB BLK, 16" x 8" CONC. FTG, 2x4 @ 16" O.C. FULL WALL



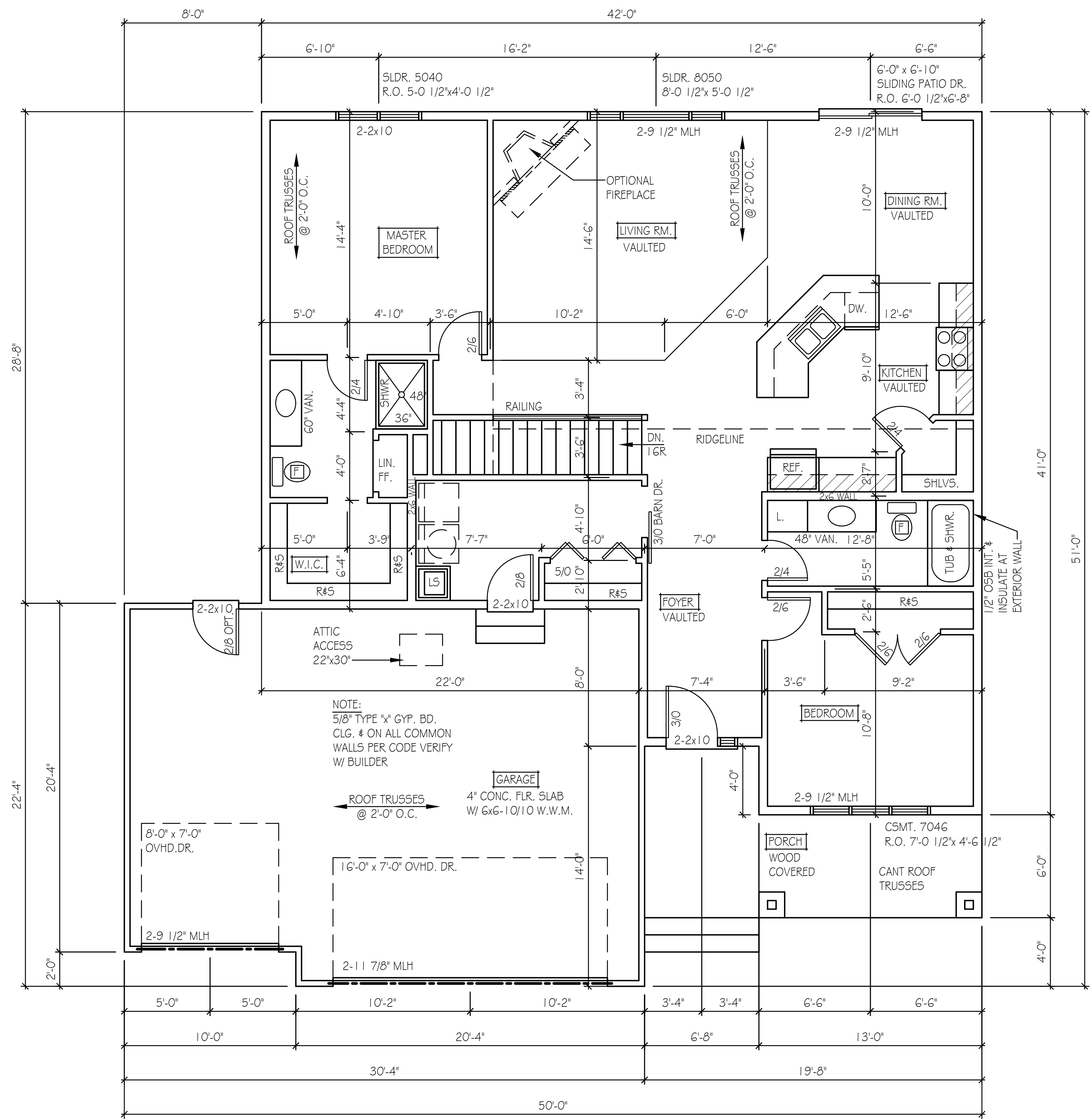
BASEMENT PLAN

BASEMENT PLAN FINISHED

1/4" = 1'-0"

1/4" = 1'-0"

C:\Users\lumber\Desktop\Drawings\2017 Drawings\FINAL\17138 DEHNRAMBLER 4.dwg, 2/17/2019 12:40:09 PM, DWG to PDF.pc3

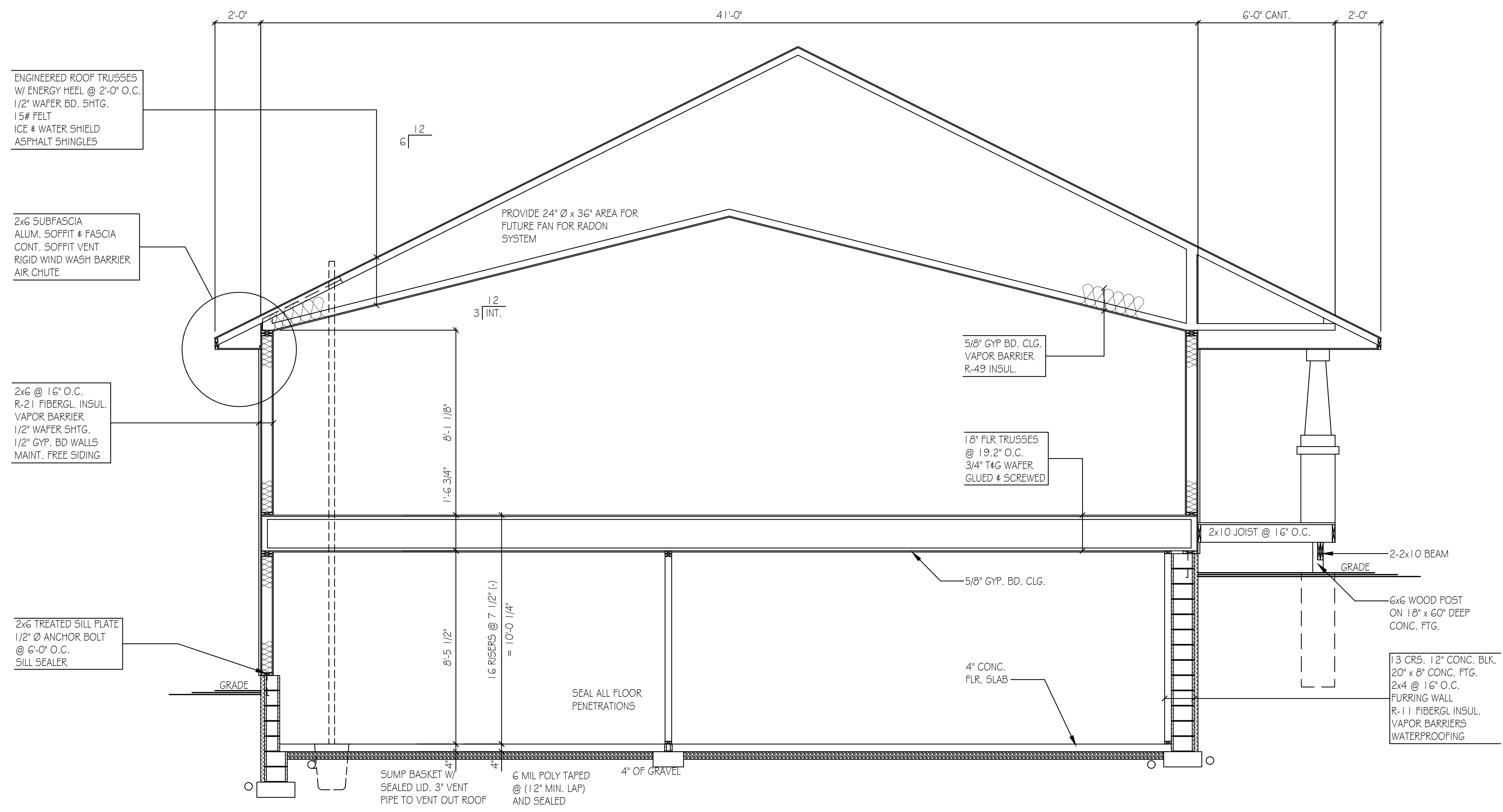


- NOTES:
- 1) HEADERS AT EXTERIOR DOORS & WINDOWS TO BE SIZED BY SUPPLIER
 - 2) SMOKE DETECTORS AS REQ'D PER CODE
 - 3) SLIDING WINDOWS (UNIT SIZES INDICATED) VERIFY WINDOW MANUF. W/ BUILDER

FLOOR PLAN
 1430 SFT. (HOUSE) 640 SFT. (GARAGE)

1/4" = 1'-0"

C:\Users\County Lumber\Desktop\Drawings\2017 Drawings\FINAL\17.138 DEHNRAMBLER 6.dwg, 2/7/2019, 12:40:28 PM, DWG To PDF.pc3



BUILDING SECTION
SEE BUILDERS SPECIFICATION FOR BUILDING MATERIALS

3/8" = 1'-0"