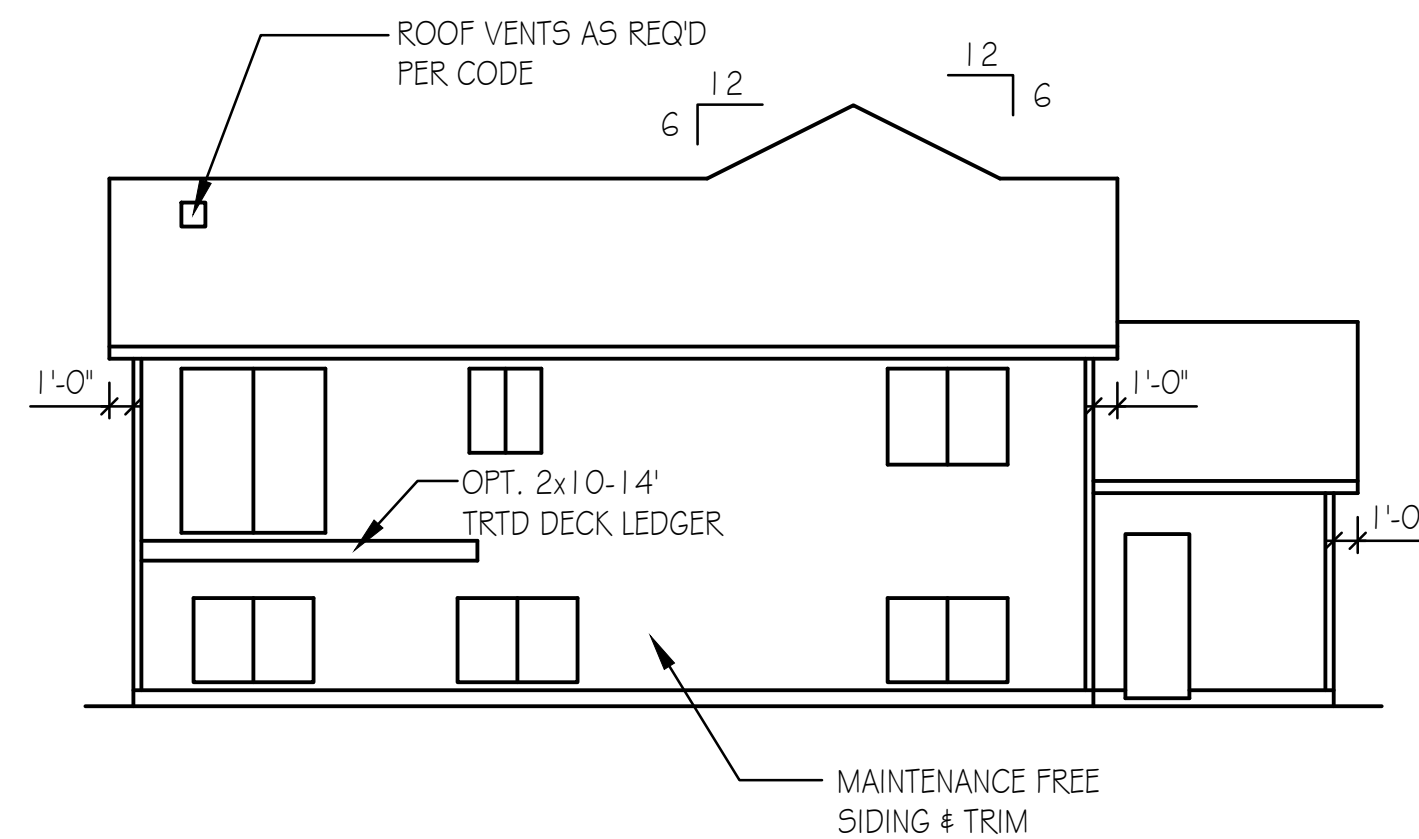


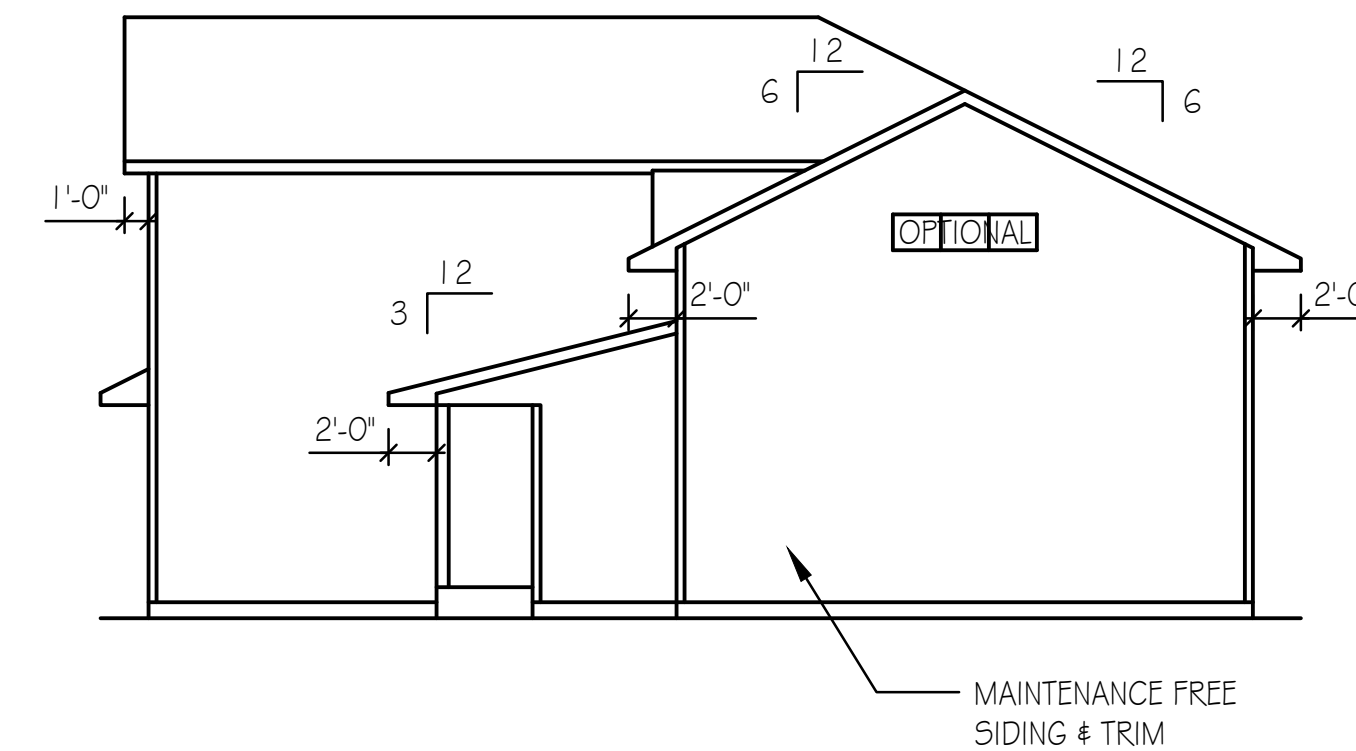
LEFT ELEVATION

1/8" = 1'-0"



REAR ELEVATION

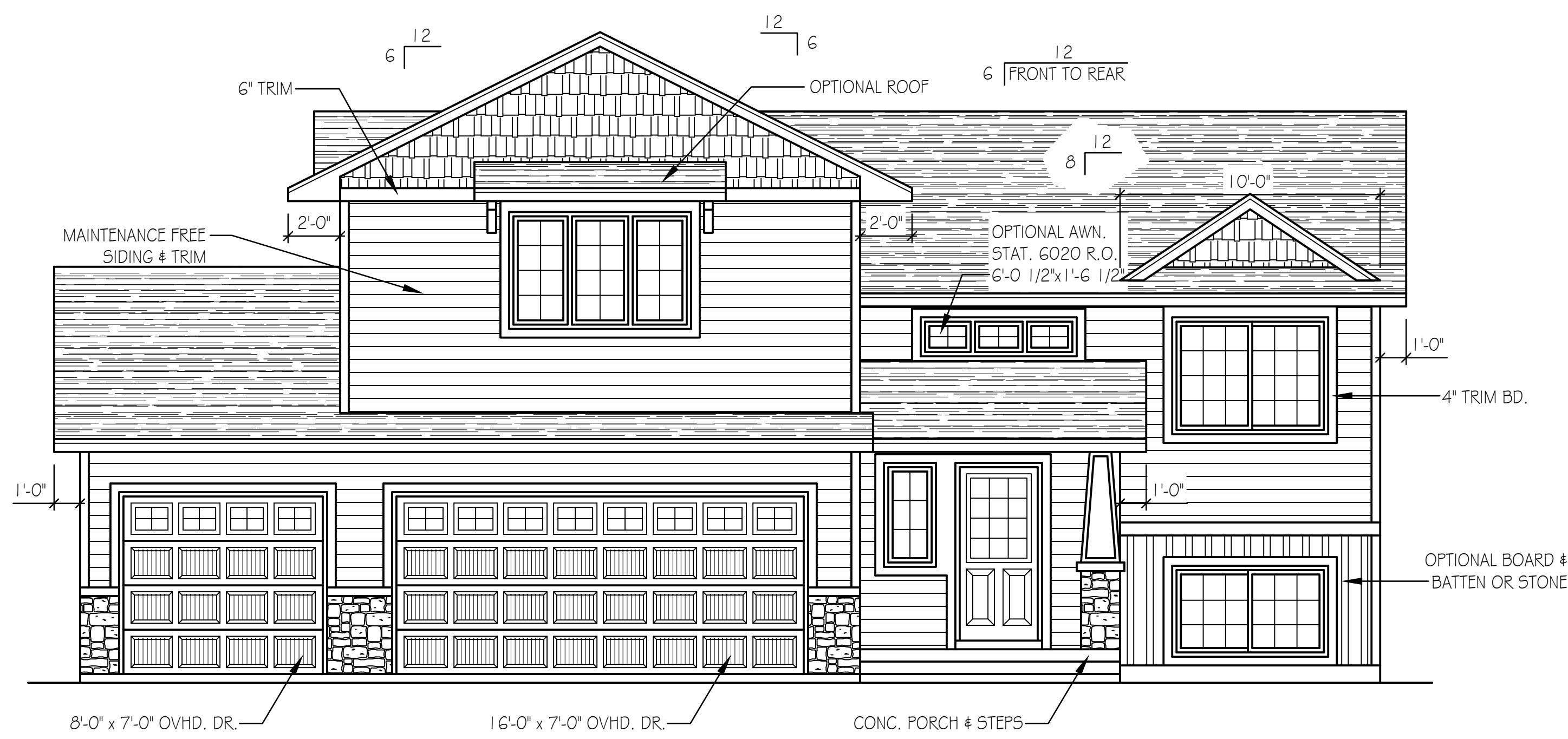
1/8" = 1'-0"



RIGHT ELEVATION

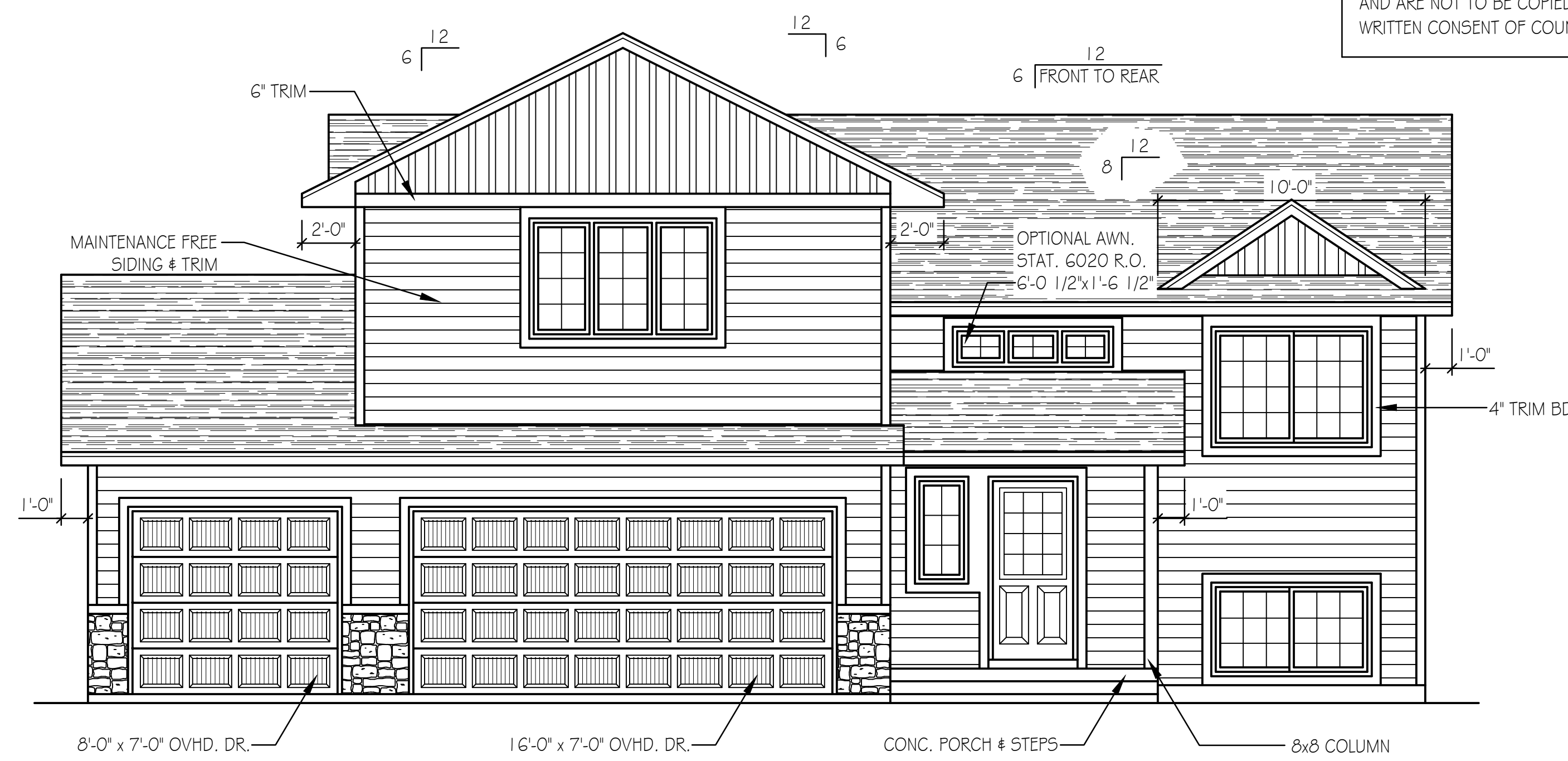
1/8" = 1'-0"

DISCLAIMER
 IN PREPARATION OF THIS PLAN EVERY ATTEMPT HAS BEEN MADE TO AVOID MISTAKES. DESIGNER CANNOT GUARANTEE AGAINST HUMAN ERROR. CONTRACTOR TO VERIFY ALL DIMENSIONS AND CONDITIONS AND BE RESPONSIBLE FOR THE SAME. THESE DESIGNS, CONCEPTS AND SPECIFICATIONS ARE INSTRUMENTS OF SERVICE AND AS SUCH REMAIN THE EXCLUSIVE PROPERTY OF COUNTRY LUMBER AND ARE NOT TO BE COPIED WITHOUT THE WRITTEN CONSENT OF COUNTRY LUMBER.



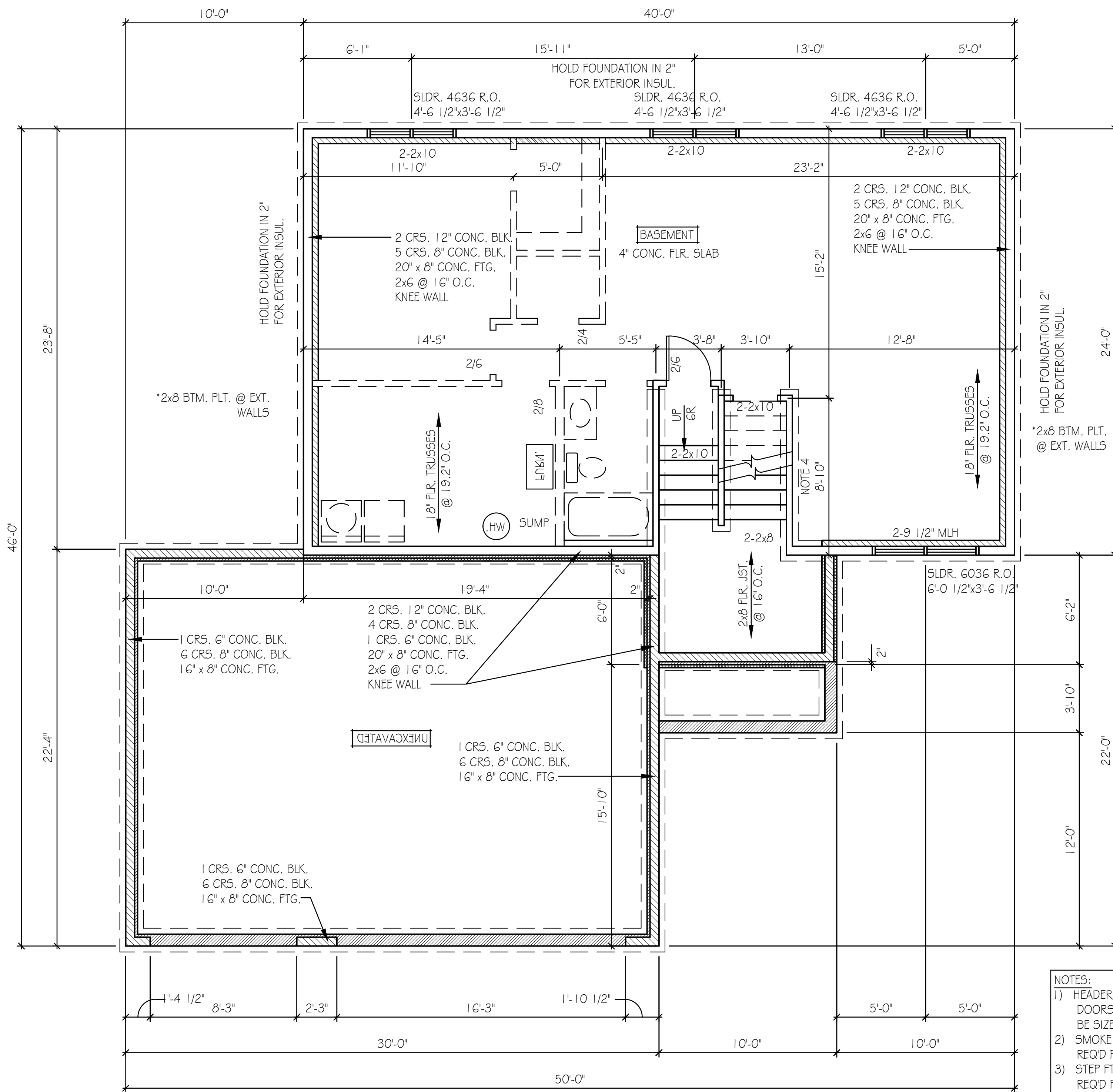
FRONT ELEVATION UPGRADE

1/4" = 1'-0"



FRONT ELEVATION STANDARD

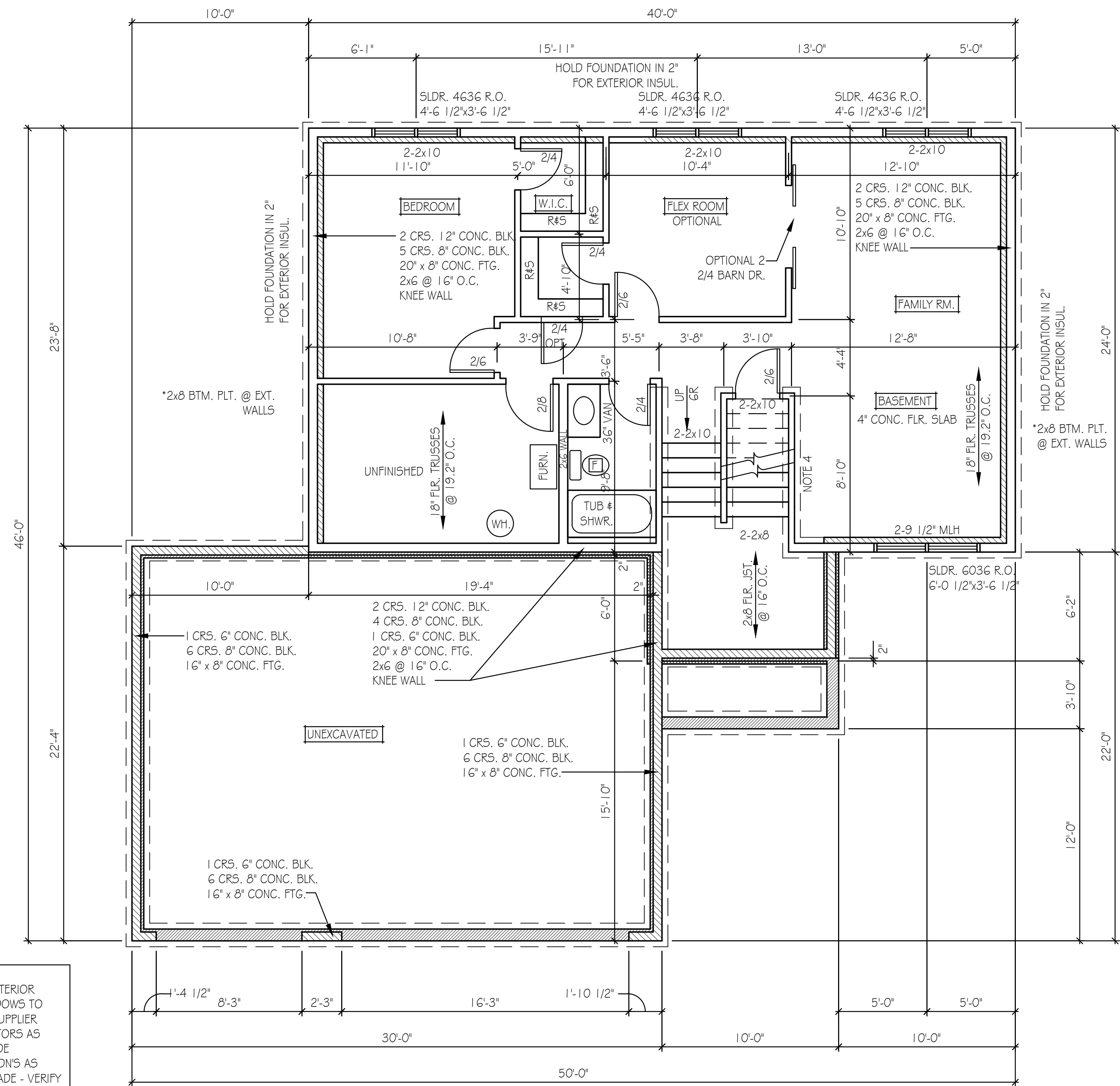
1/4" = 1'-0"



BASEMENT PLAN

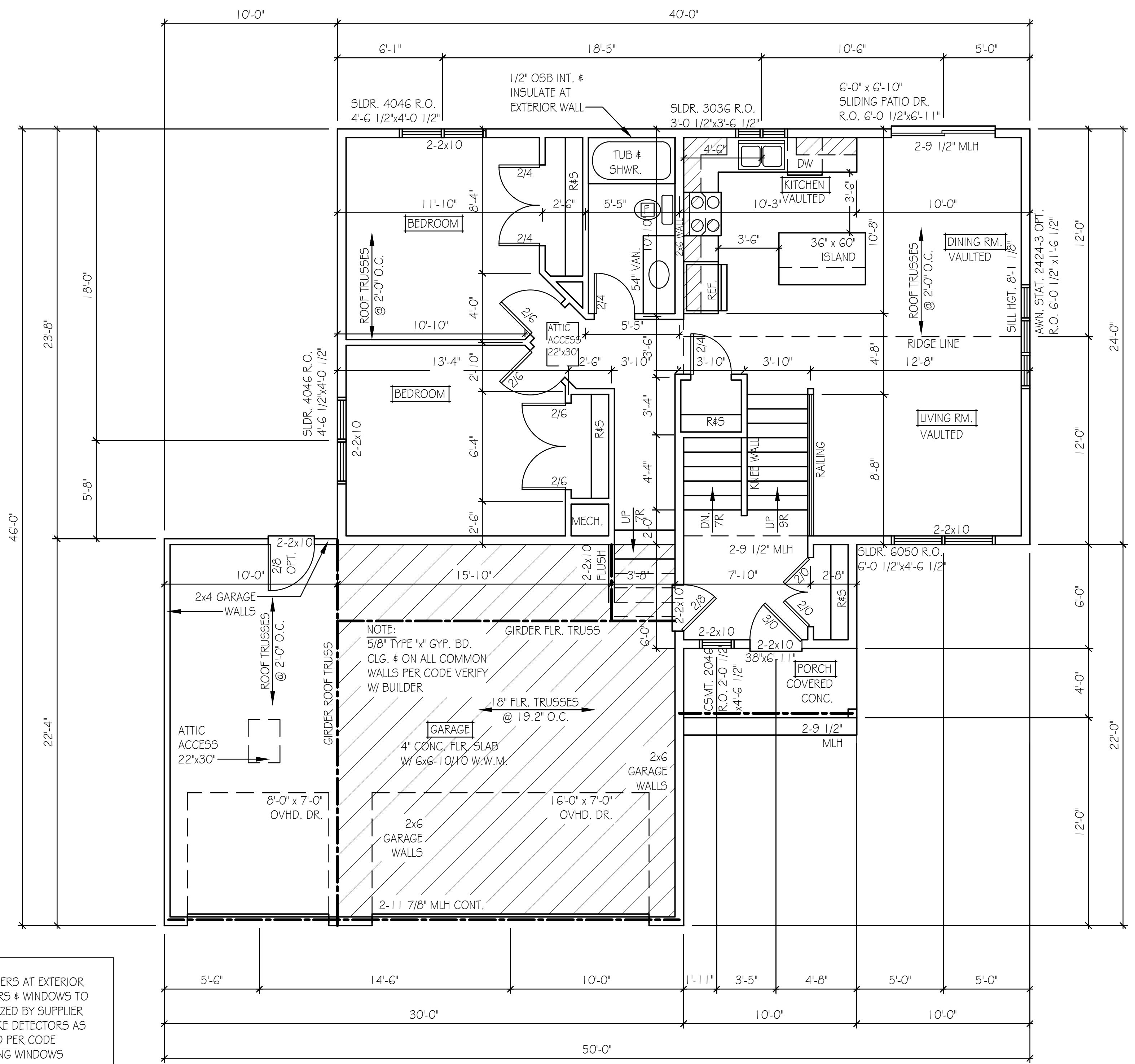
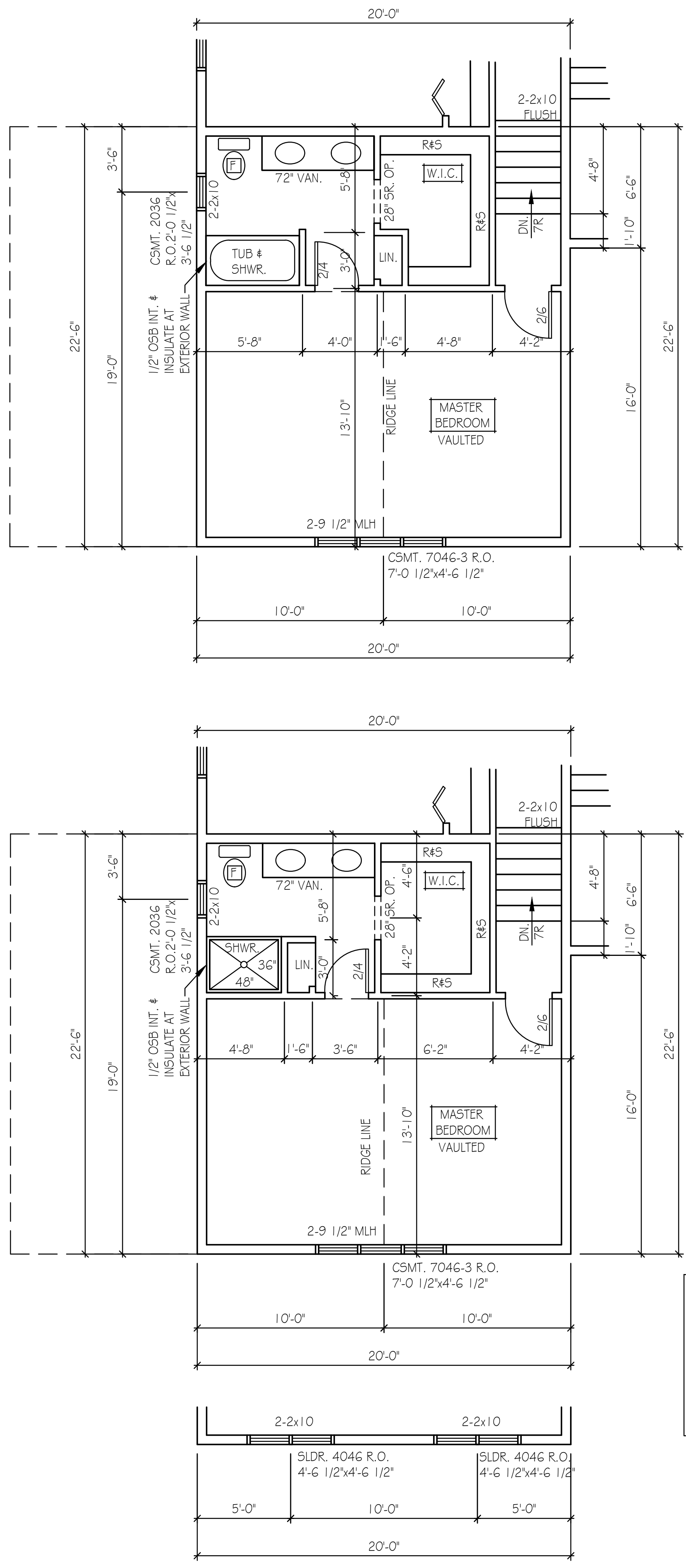
1/4" = 1'-0"

- NOTES:
- 1) HEADERS AT EXTERIOR DOORS & WINDOWS TO BE SIZED BY SUPPLIER
 - 2) SMOKE DETECTORS AS REQD PER CODE
 - 3) STEP FTGS & FDN'S AS REQD FOR GRADE - VERIFY W/ BUILDER
 - 4) 1 CRS. 4" CURB BLK. 16' x 8" CONC. FTG. 2x4 @ 16" O.C. FULL WALL



BASEMENT PLAN FINISHED

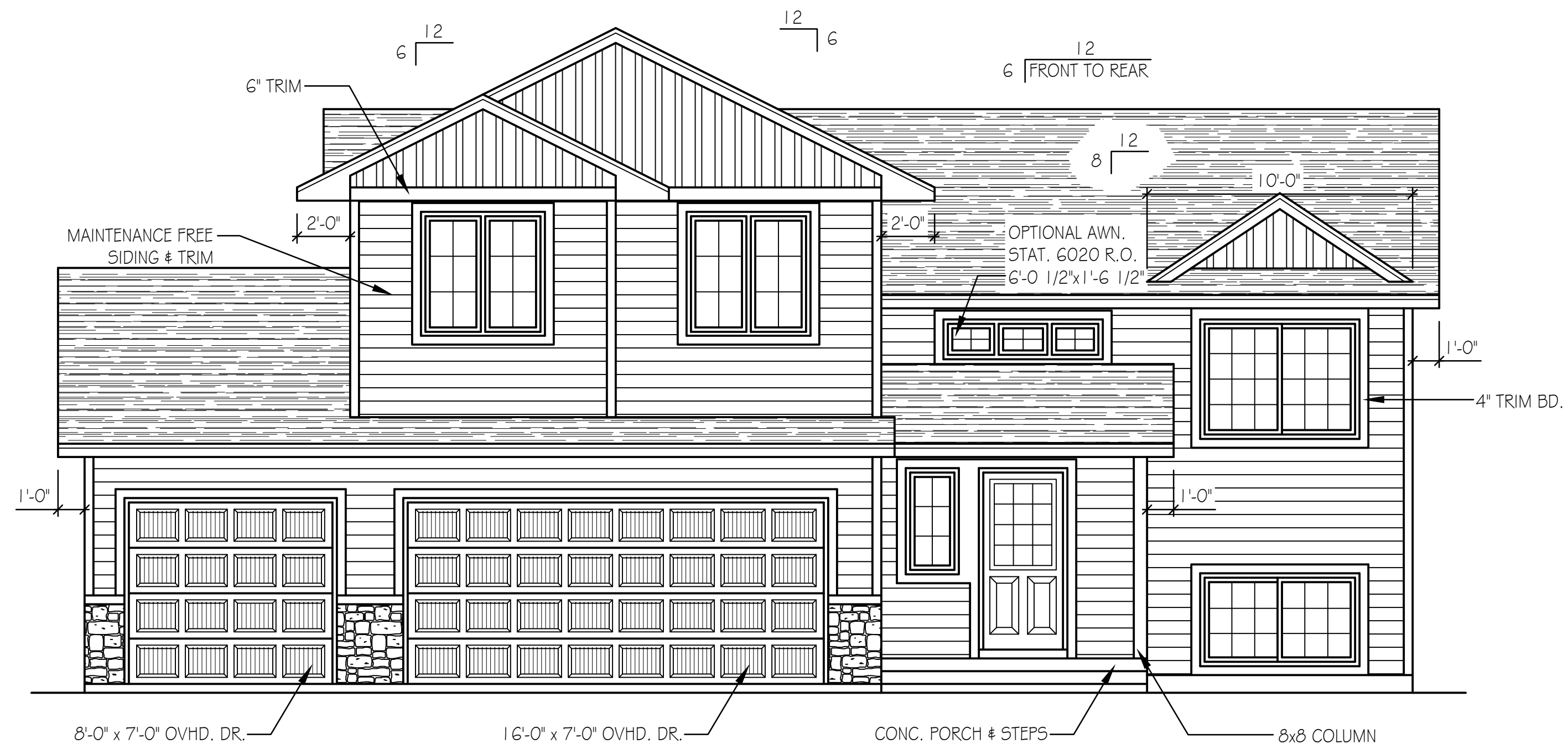
1/4" = 1'-0"



- NOTES:**
- 1) HEADERS AT EXTERIOR DOORS & WINDOWS TO BE SIZED BY SUPPLIER
 - 2) SMOKE DETECTORS AS REQ'D PER CODE
 - 3) SLIDING WINDOWS (UNIT SIZES INDICATED IN INCHES)- VERIFY WINDOW MANUF. W/ BUILDER

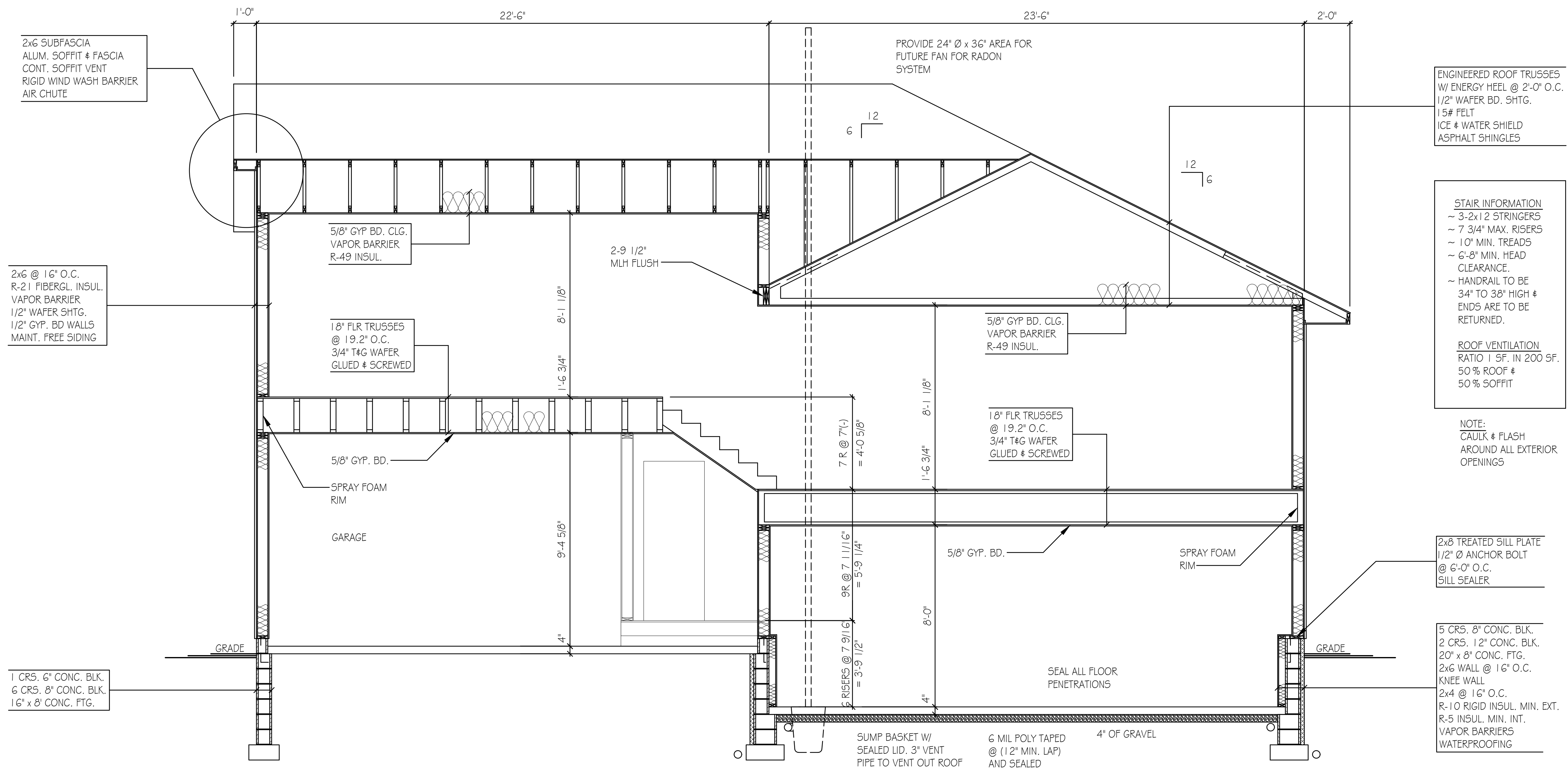
FLOOR PLAN
 1023 SFT. (HOUSE) 660 SFT. (GARAGE)
 440 SFT. (MASTER SUITE)
 1463 SFT. (TOTAL)

1/4" = 1'-0"



OPTIONAL FRONT ELEVATION

3/8" = 1'-0"



BUILDING SECTION
SEE BUILDERS SPECIFICATION FOR BUILDING MATERIALS

3/8" = 1'-0"

C:\Users\lumber\Desktop\Drawings\2017 Drawings\FINAL\17.081 DEHN\SPILT 6.dwg, 2/6/2019 9:09:31 AM, DWG To PDF.pc3