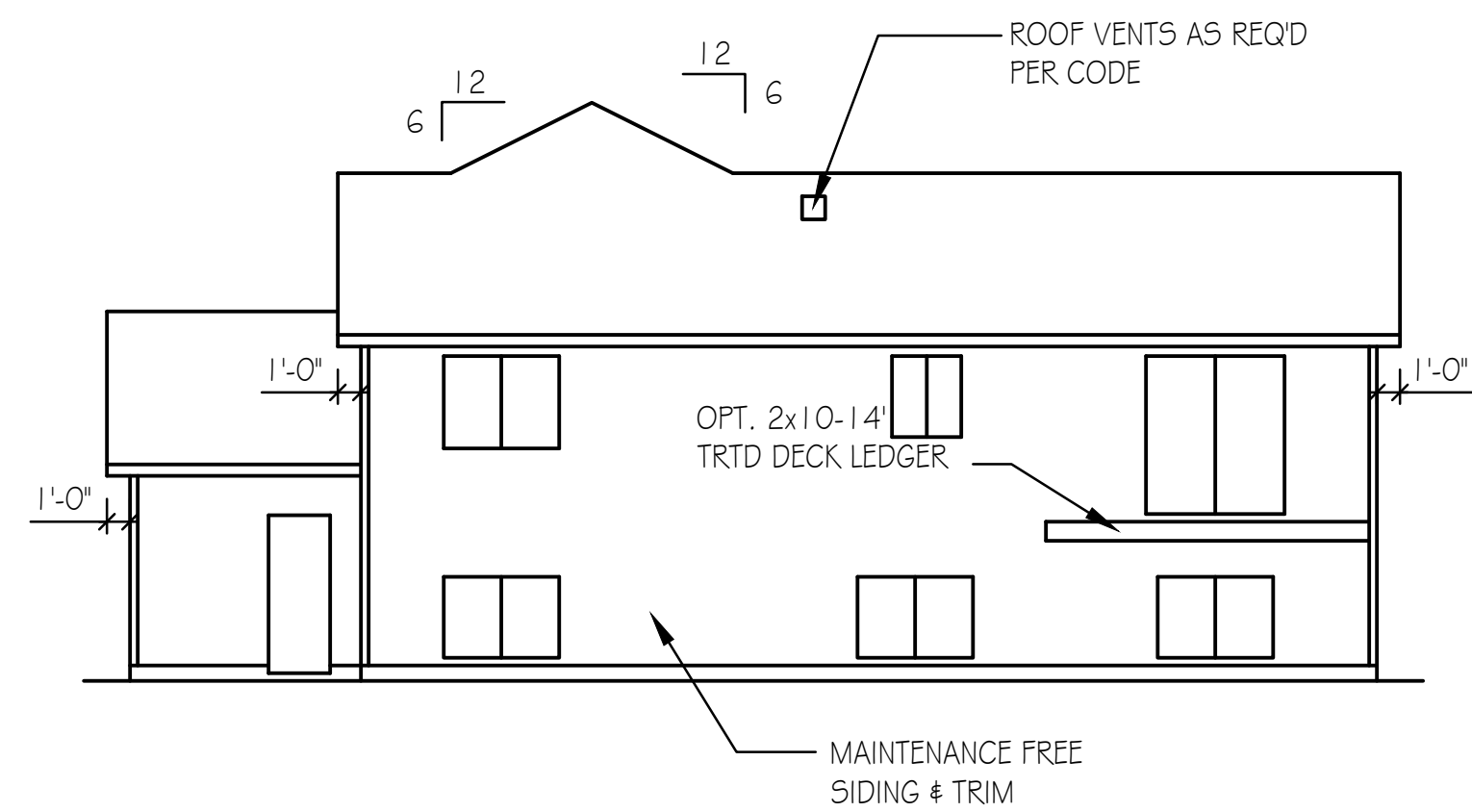


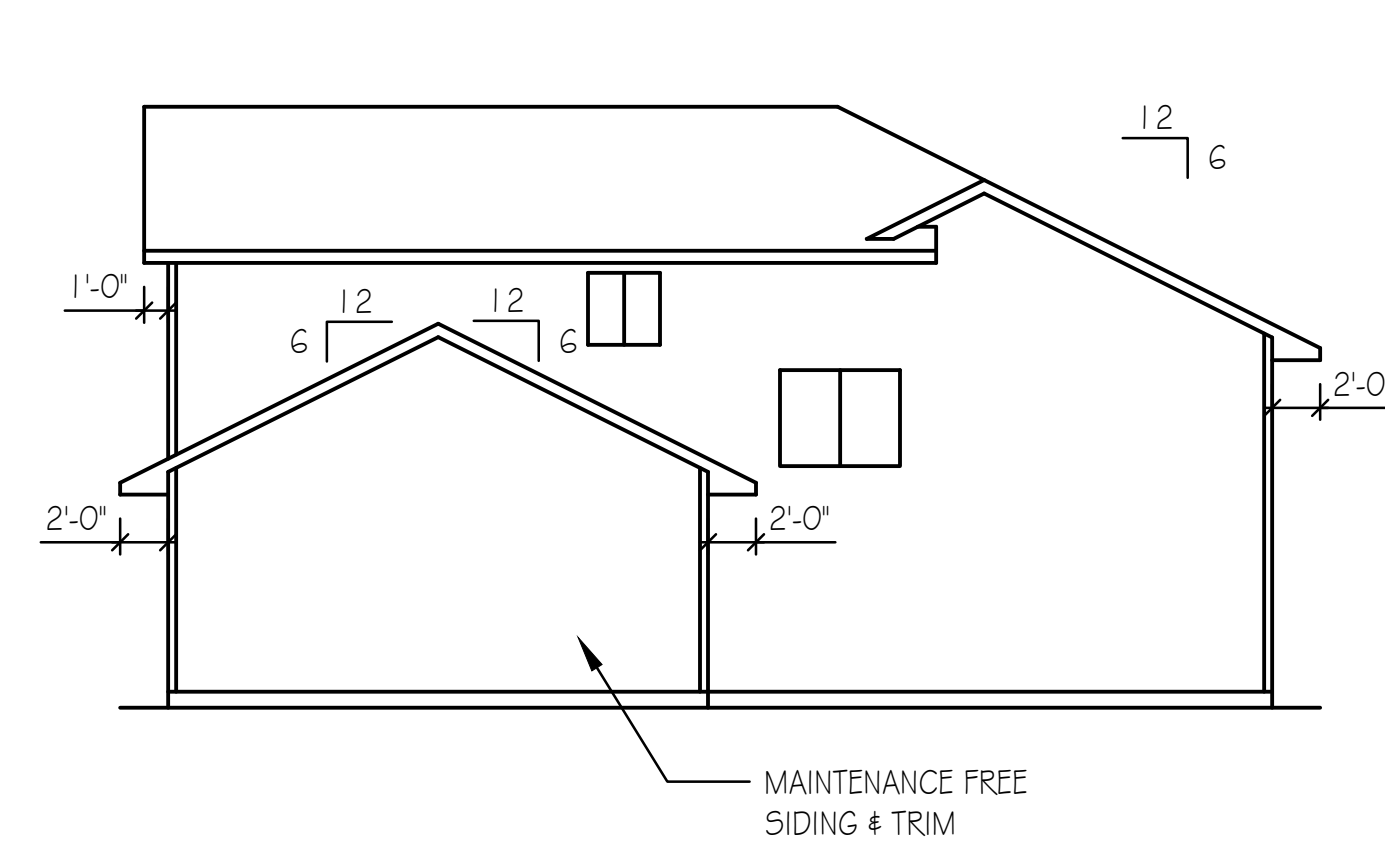
LEFT ELEVATION

1/8" = 1'-0"



REAR ELEVATION

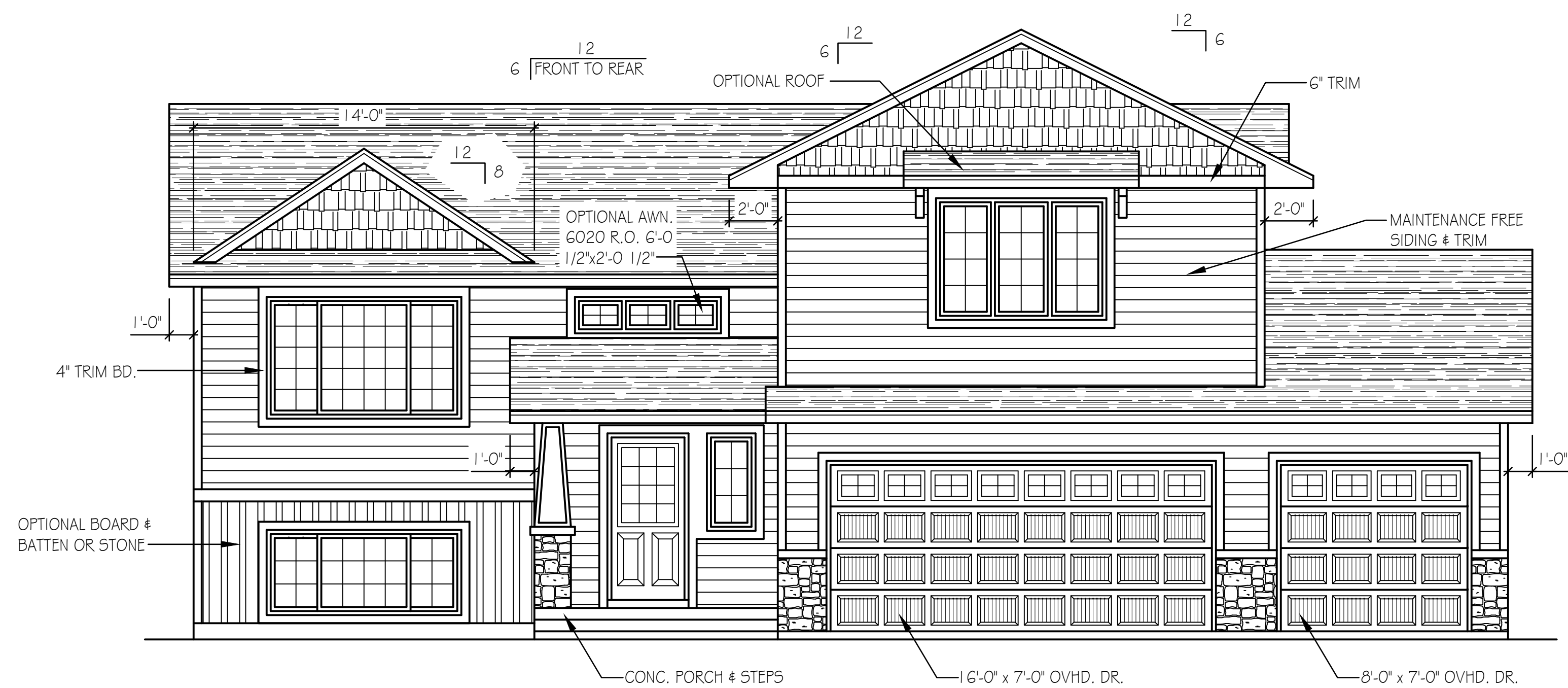
1/8" = 1'-0"



RIGHT ELEVATION

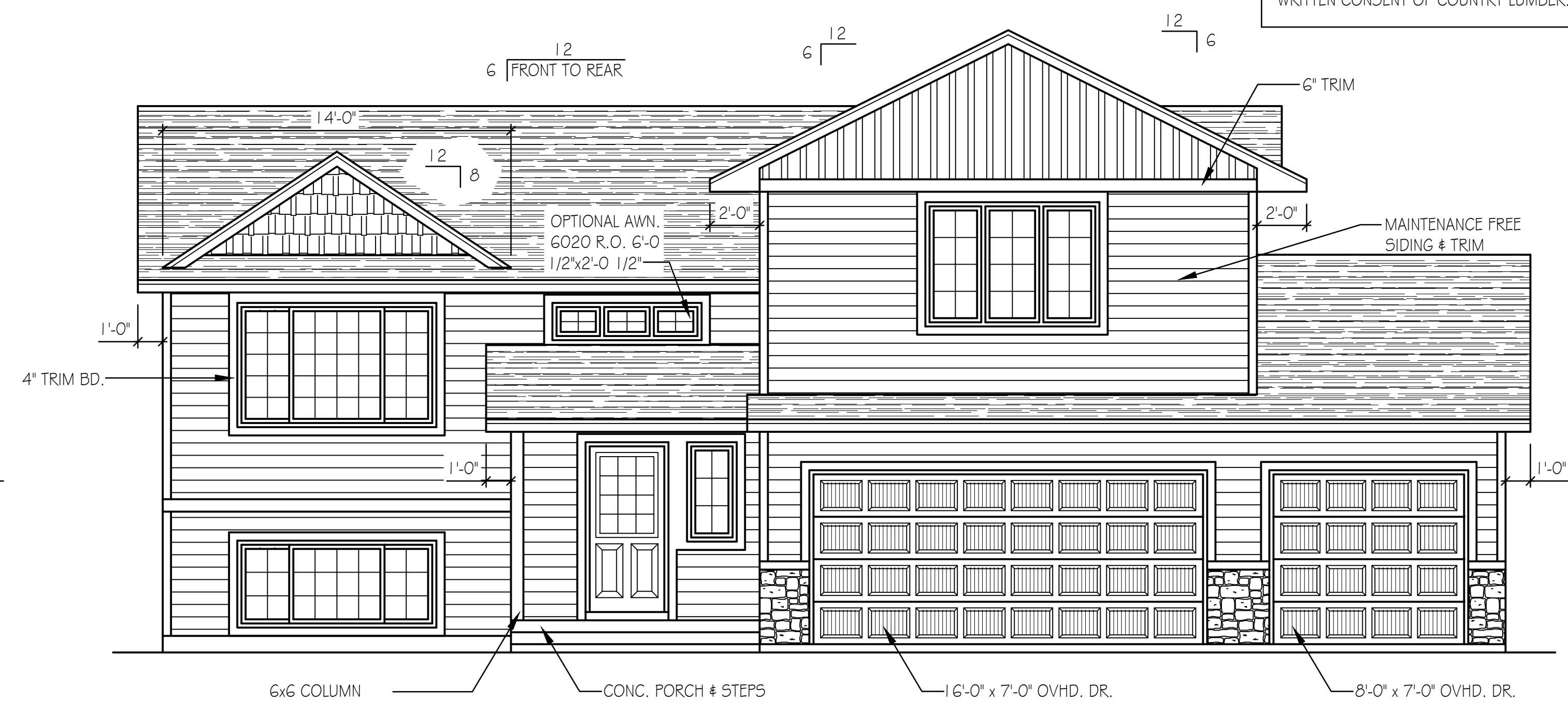
1/8" = 1'-0"

**DISCLAIMER**  
 IN PREPARATION OF THIS PLAN EVERY ATTEMPT HAS BEEN MADE TO AVOID MISTAKES. DESIGNER CANNOT GUARANTEE AGAINST HUMAN ERROR. CONTRACTOR TO VERIFY ALL DIMENSIONS AND CONDITIONS AND BE RESPONSIBLE FOR THE SAME. THESE DESIGNS, CONCEPTS AND SPECIFICATIONS ARE INSTRUMENTS OF SERVICE AND AS SUCH REMAIN THE EXCLUSIVE PROPERTY OF COUNTRY LUMBER AND ARE NOT TO BE COPIED WITHOUT THE WRITTEN CONSENT OF COUNTRY LUMBER.



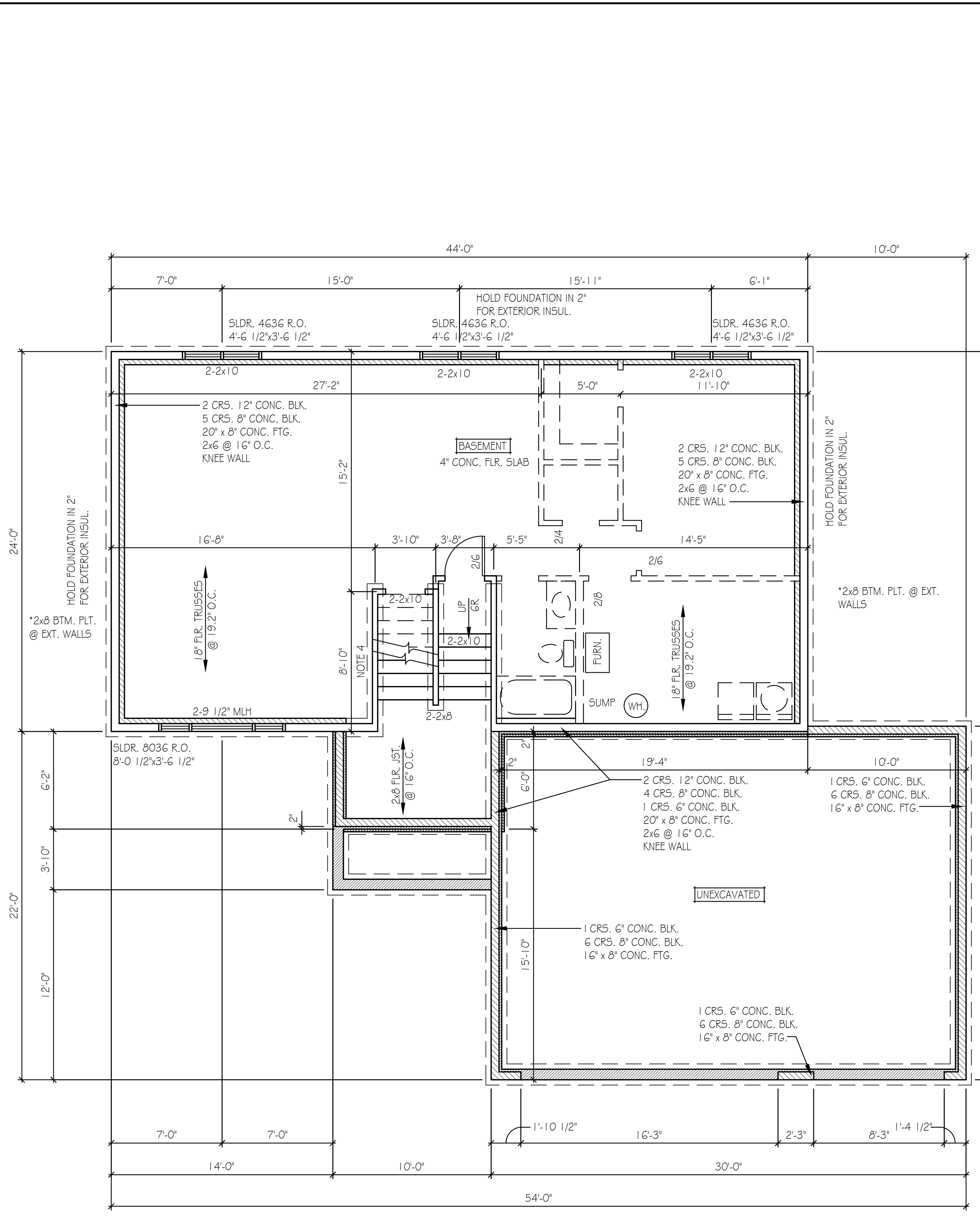
FRONT ELEVATION UPGRADE

1/4" = 1'-0"



FRONT ELEVATION STANDARD

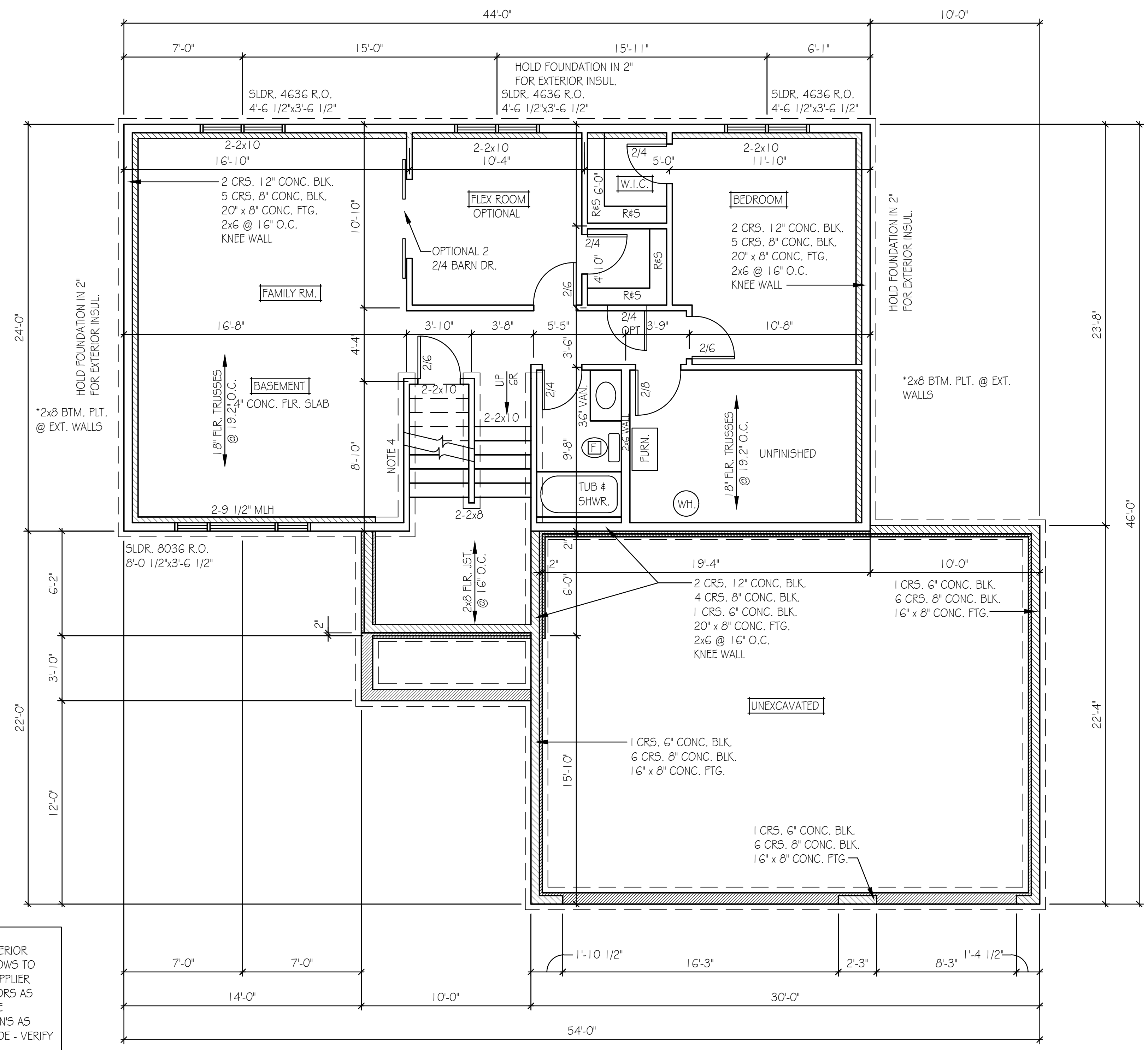
1/4" = 1'-0"



BASEMENT PLAN

1/4" = 1'-0"

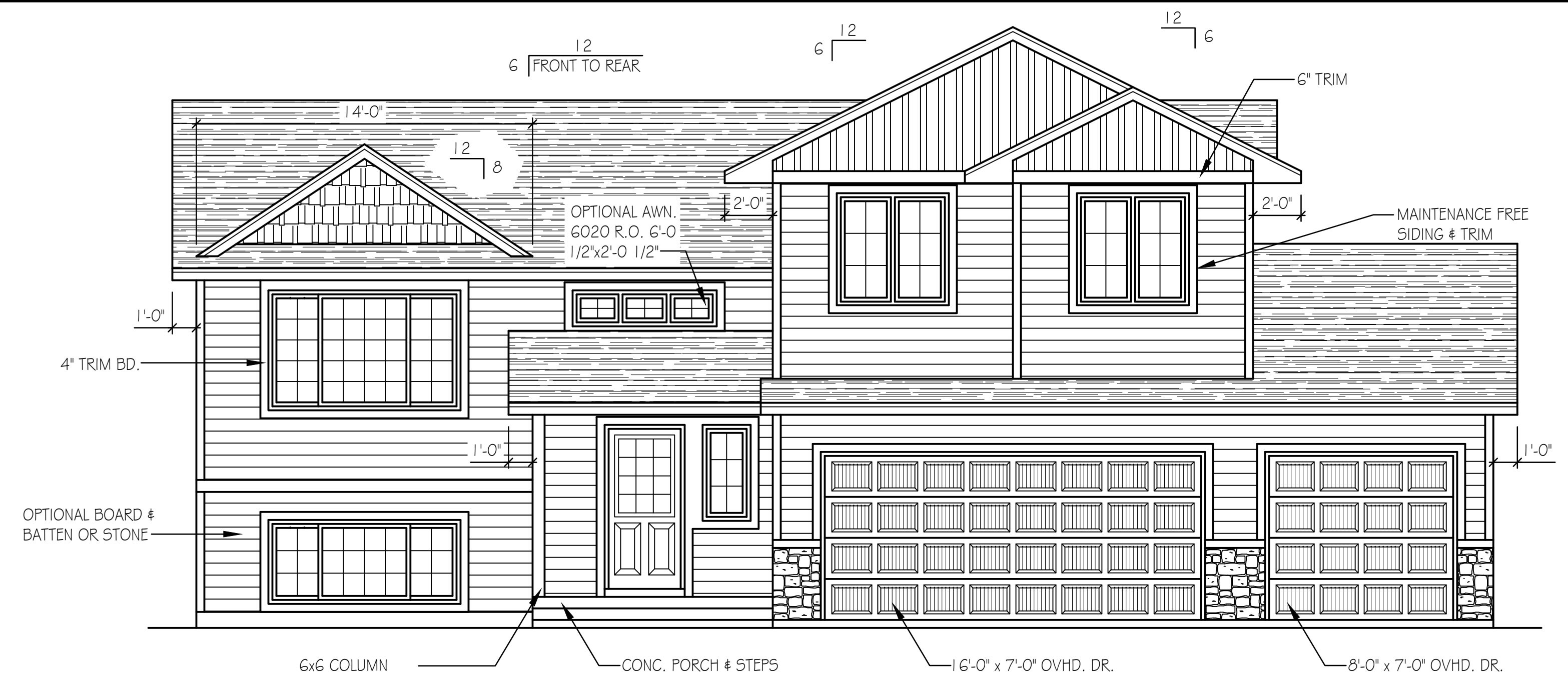
- NOTES:
- 1) HEADERS AT EXTERIOR DOORS & WINDOWS TO BE SIZED BY SUPPLIER
  - 2) SMOKE DETECTORS AS REQD PER CODE
  - 3) STEP FTGS & FDN'S AS REQD FOR GRADE - VERIFY W/ BUILDER
  - 4) 1 CRS. 4" CURB BLK. 16" x 8" CONC. FTG. 2x4 @ 16" O.C. FULL WALL



BASEMENT PLAN FINISHED

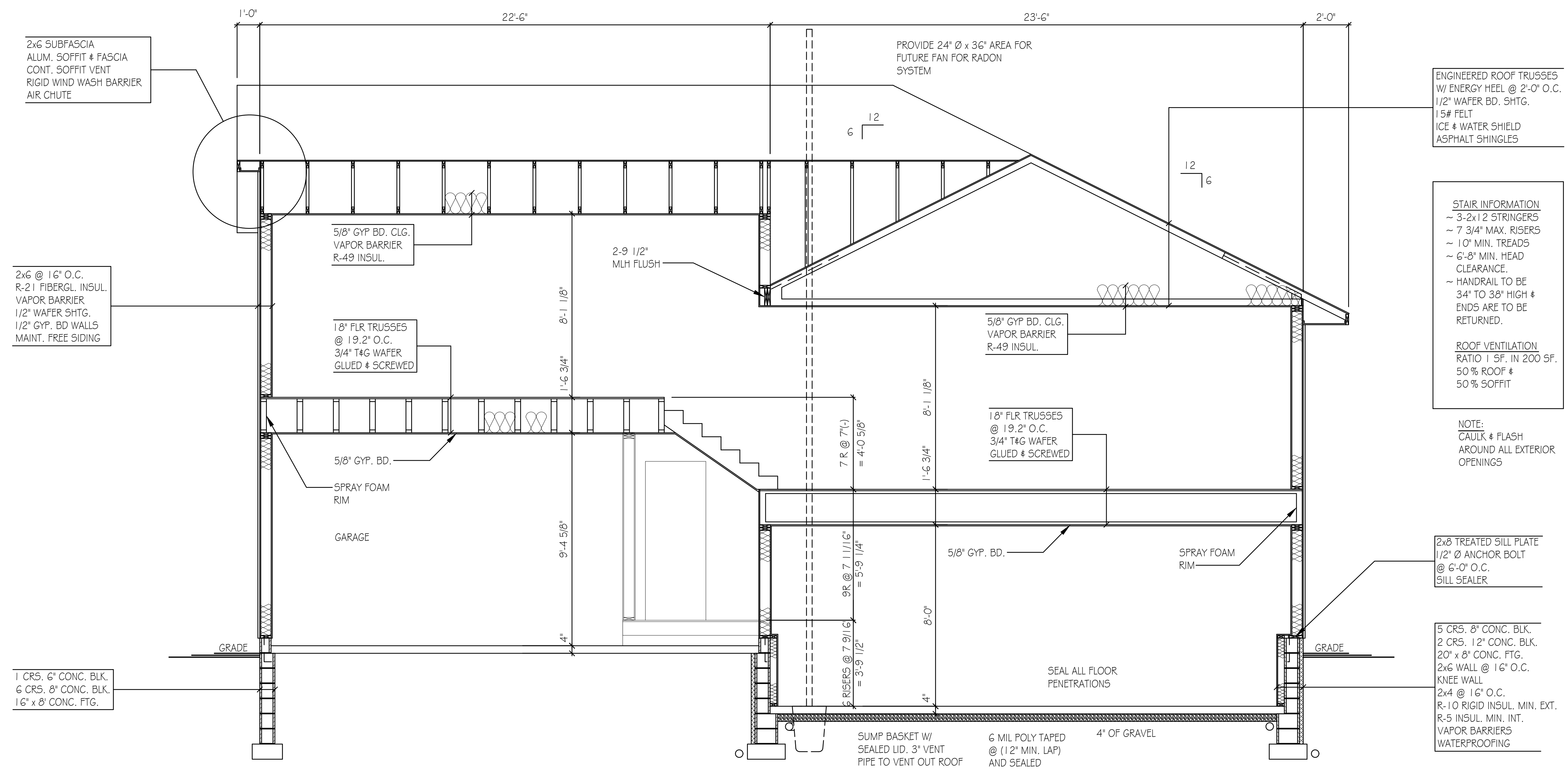
1/4" = 1'-0"





OPTIONAL FRONT ELEVATION

3/8" = 1'-0"



BUILDING SECTION  
SEE BUILDERS SPECIFICATION FOR BUILDING MATERIALS

3/8" = 1'-0"

C:\Users\lumber\Desktop\Drawings\2017 Drawings\FINAL\17.081 DEHN\SPILT 6.dwg, 1/24/2019 3:04:26 PM, DWG To PDF.pc3