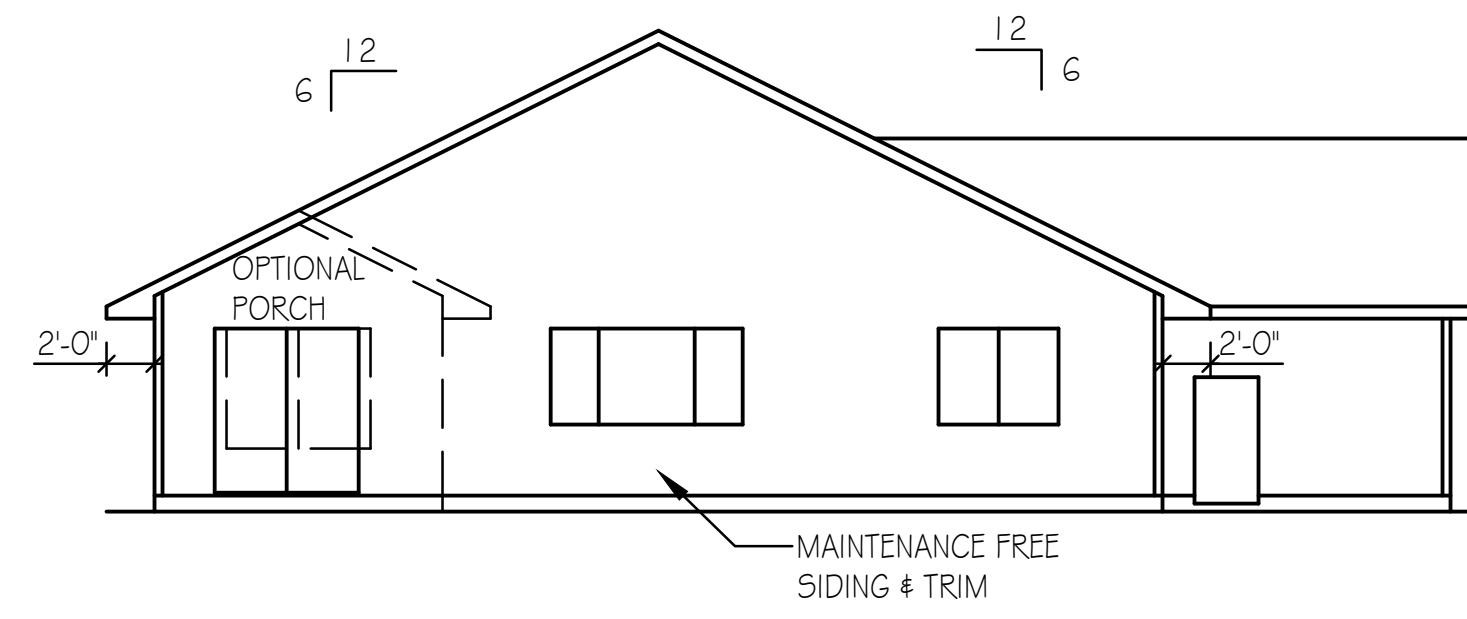


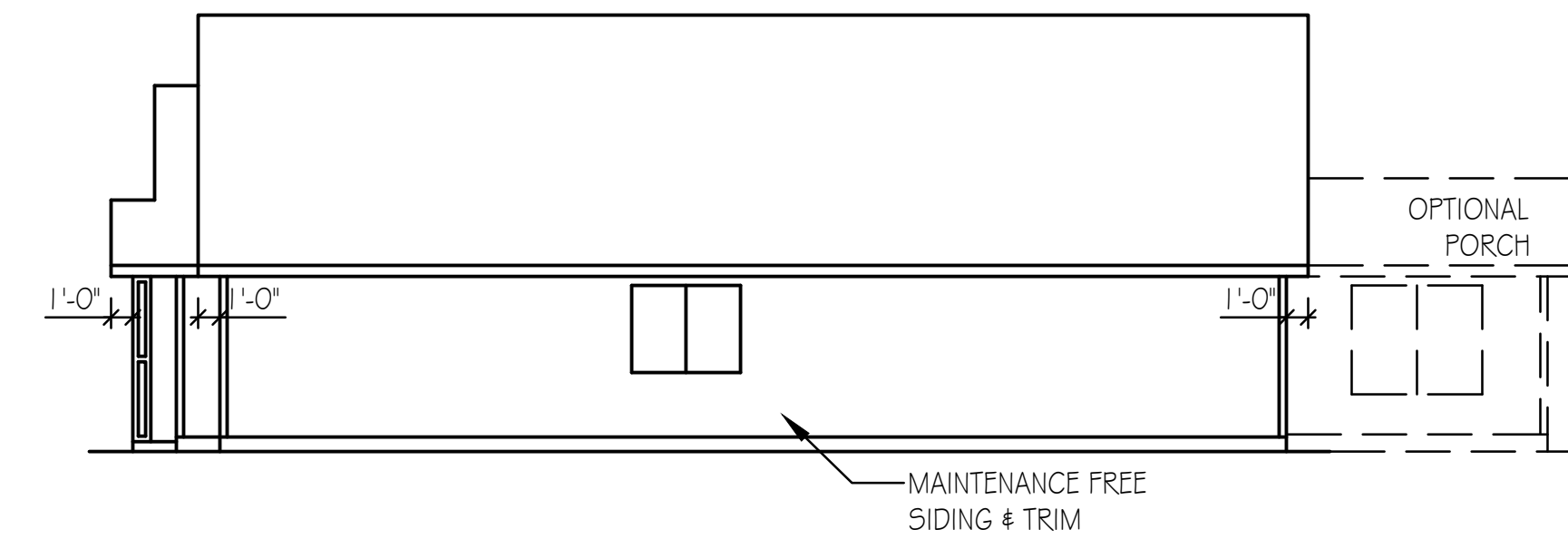
LEFT ELEVATION

1/8" = 1'-0"



REAR ELEVATION

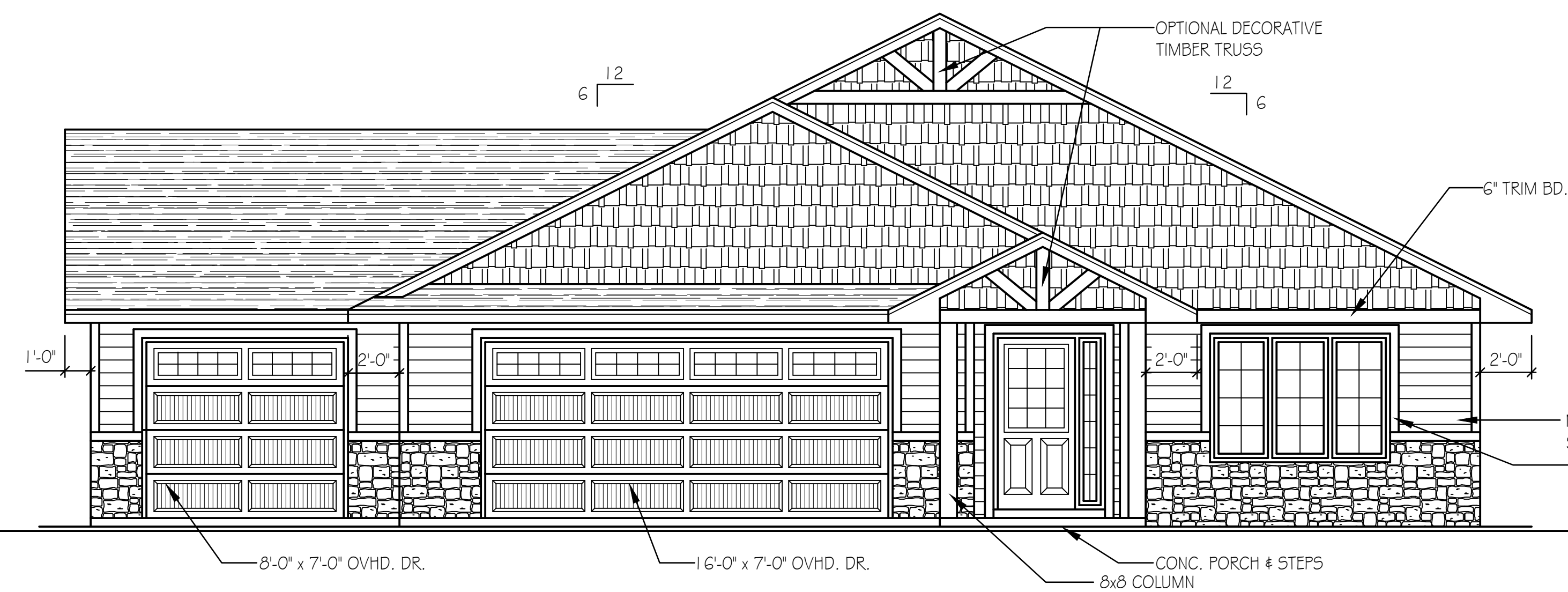
1/8" = 1'-0"



RIGHT ELEVATION

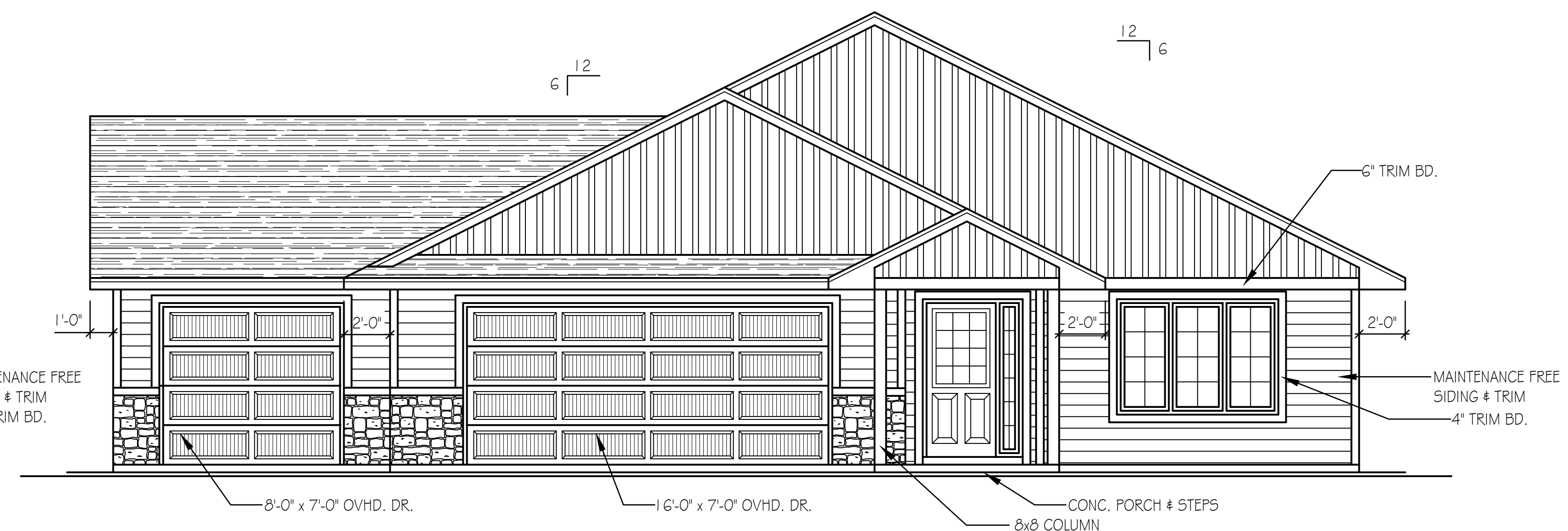
1/8" = 1'-0"

DISCLAIMER
 IN PREPARATION OF THIS PLAN EVERY ATTEMPT HAS BEEN MADE TO AVOID MISTAKES. DESIGNER CANNOT GUARANTEE AGAINST HUMAN ERROR. CONTRACTOR TO VERIFY ALL DIMENSIONS AND CONDITIONS AND BE RESPONSIBLE FOR THE SAME. THESE DESIGNS, CONCEPTS AND SPECIFICATIONS ARE INSTRUMENTS OF SERVICE AND AS SUCH REMAIN THE EXCLUSIVE PROPERTY OF COUNTRY LUMBER AND ARE NOT TO BE COPIED WITHOUT THE WRITTEN CONSENT OF COUNTRY LUMBER.



FRONT ELEVATION UPGRADE

1/4" = 1'-0"



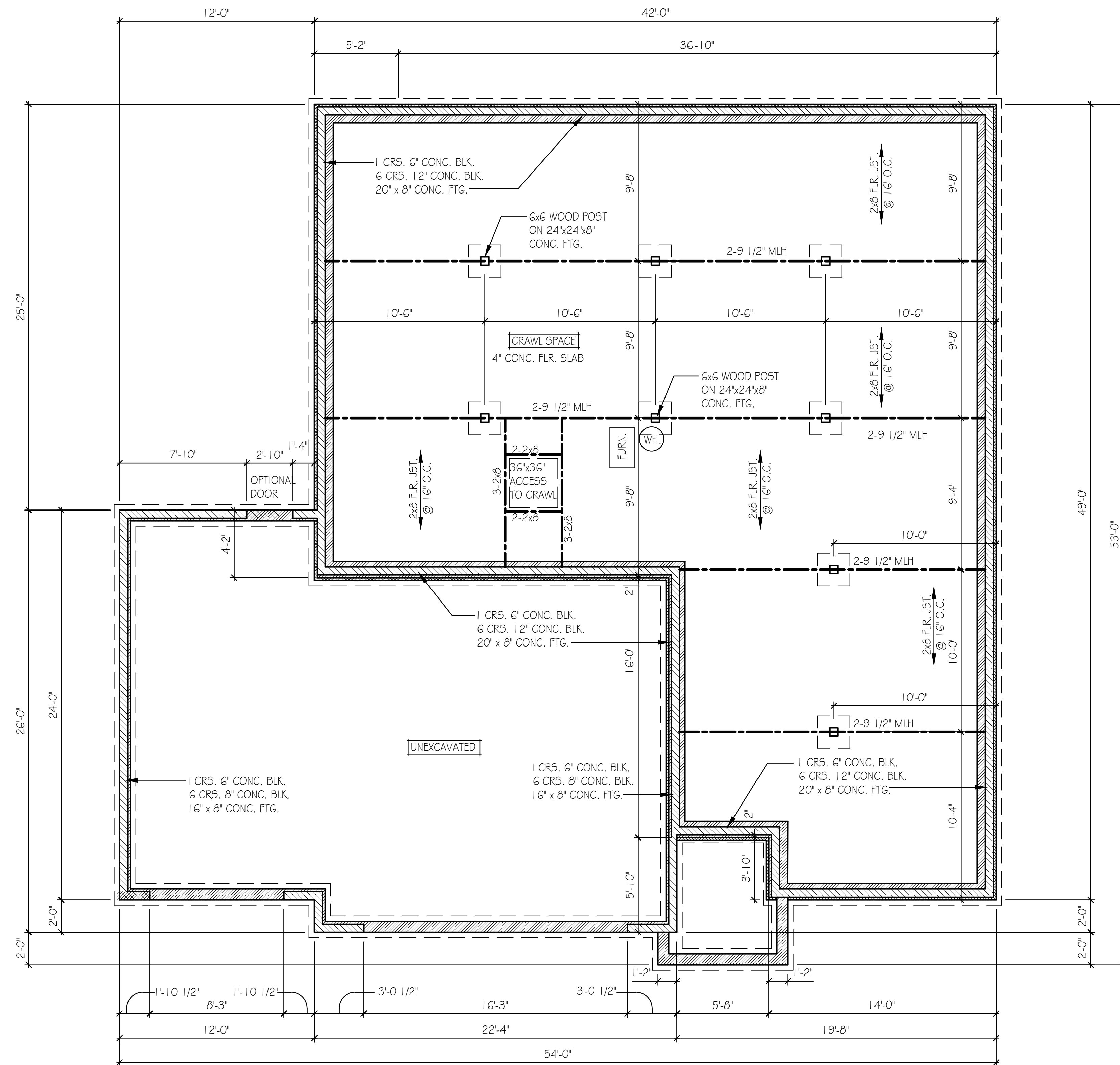
FRONT ELEVATION STANDARD

1/4" = 1'-0"

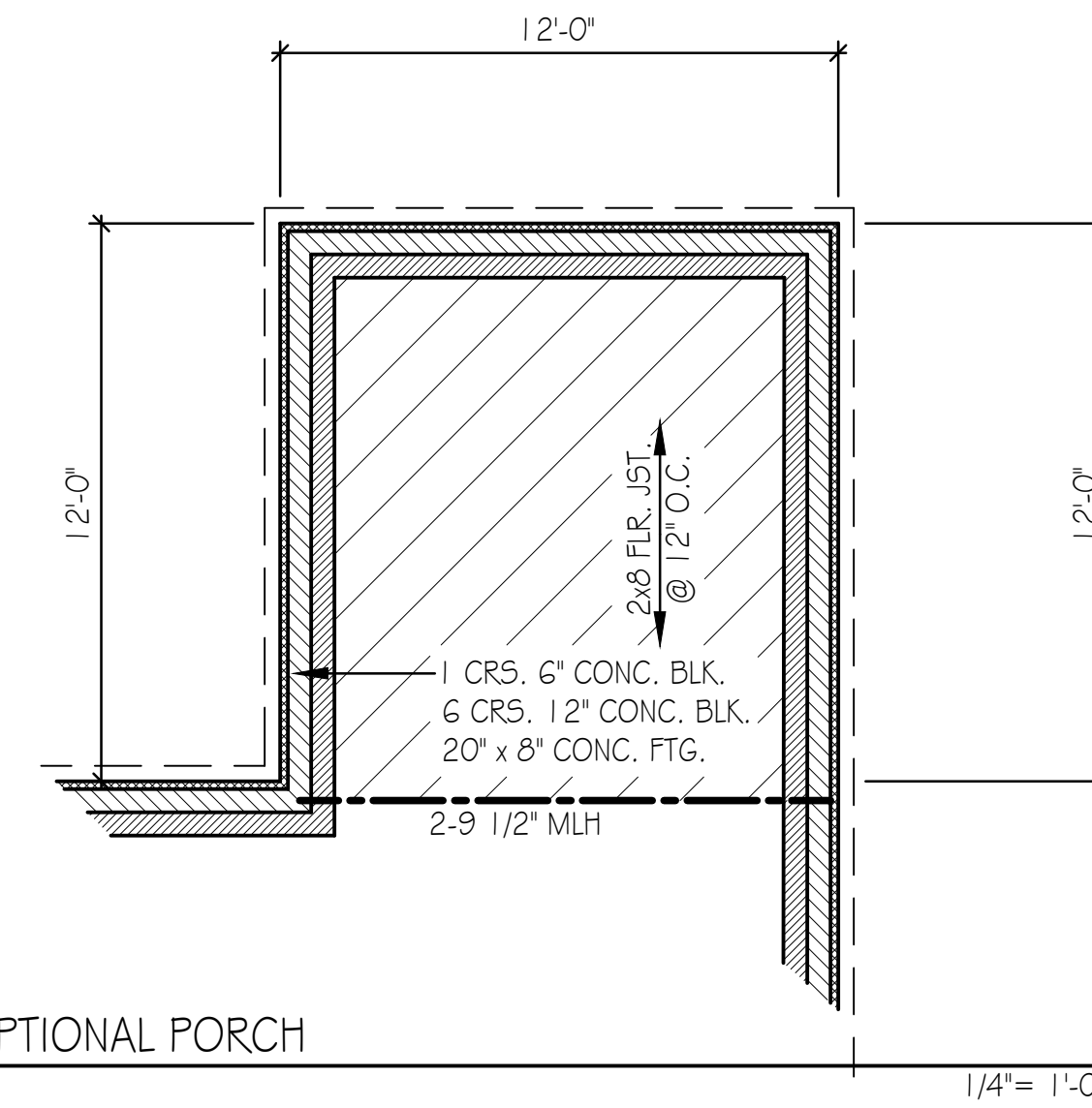
DESIGN FOR:
 THOMAS ALLEN HOMES
 THE SERENITY

DESIGN CENTER
 12575 OAK VIEW AVE. BECKER, MN. 55308
 PHONE: (763) 262-4750
 FAX: (763) 262-4755
 1-800-247-0295

COUNTRY LUMBER



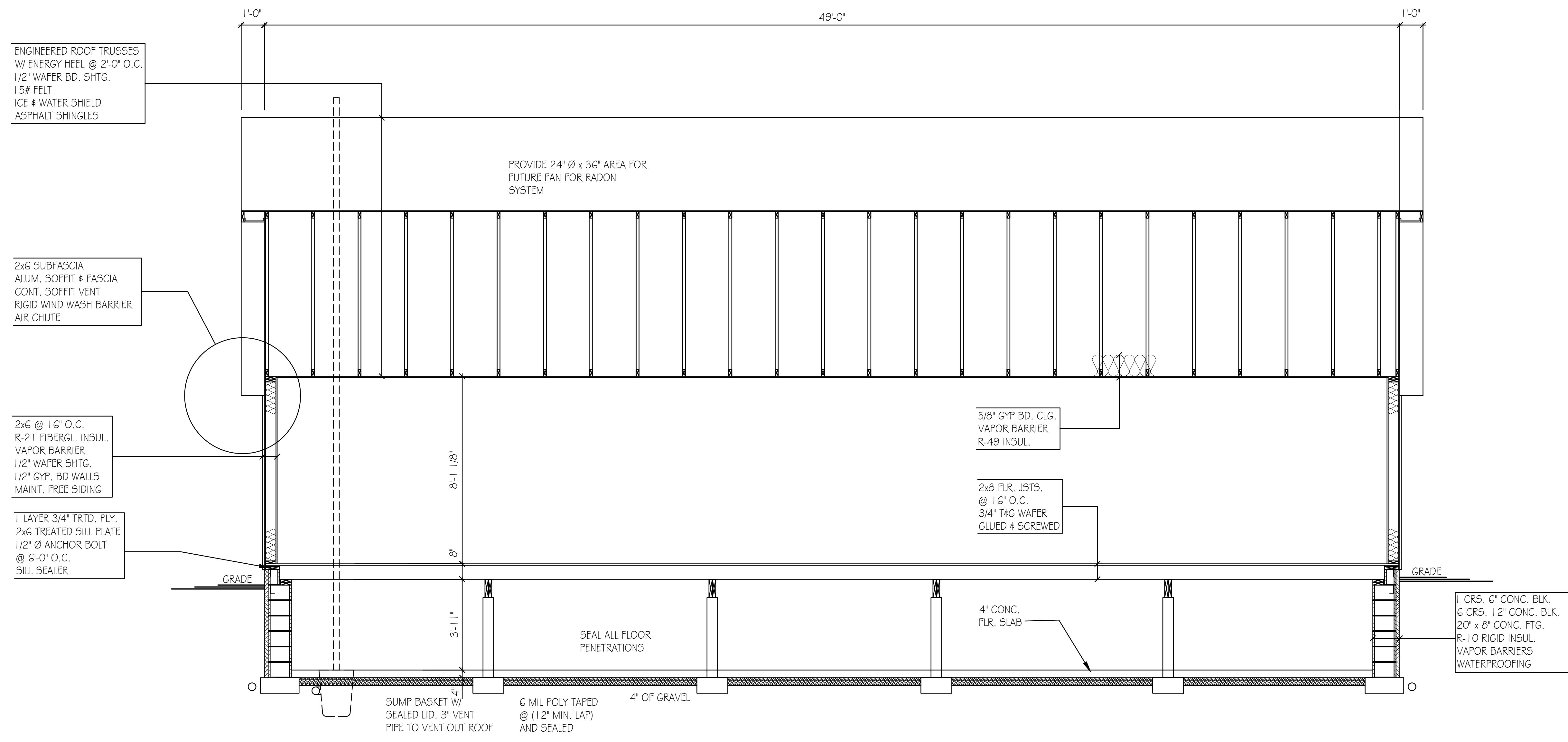
BASEMENT PLAN



OPTIONAL PORCH

- NOTES:
- 1) HEADERS AT EXTERIOR DOORS & WINDOWS TO BE SIZED BY SUPPLIER
 - 2) SMOKE DETECTORS AS REQ'D PER CODE
 - 3) STEP FTGS & FDN'S AS REQ'D FOR GRADE - VERIFY W/ BUILDER
 - 4) 1 CRS. 4" CURB BLK. 16" x 8" CONC. FTG. 2x4 @ 16" O.C. FULL WALL

1/4" = 1'-0"



BUILDING SECTION
SEE BUILDERS SPECIFICATION FOR BUILDING MATERIALS

3/8" = 1'-0"

C:\Users\Country Lumber\Desktop\Drawings\2018 Drawings\FINAL\18.072 DEHNRAMBLER 6.dwg, 1/23/2019 10:04:17 AM, DWG To PDF.pc3