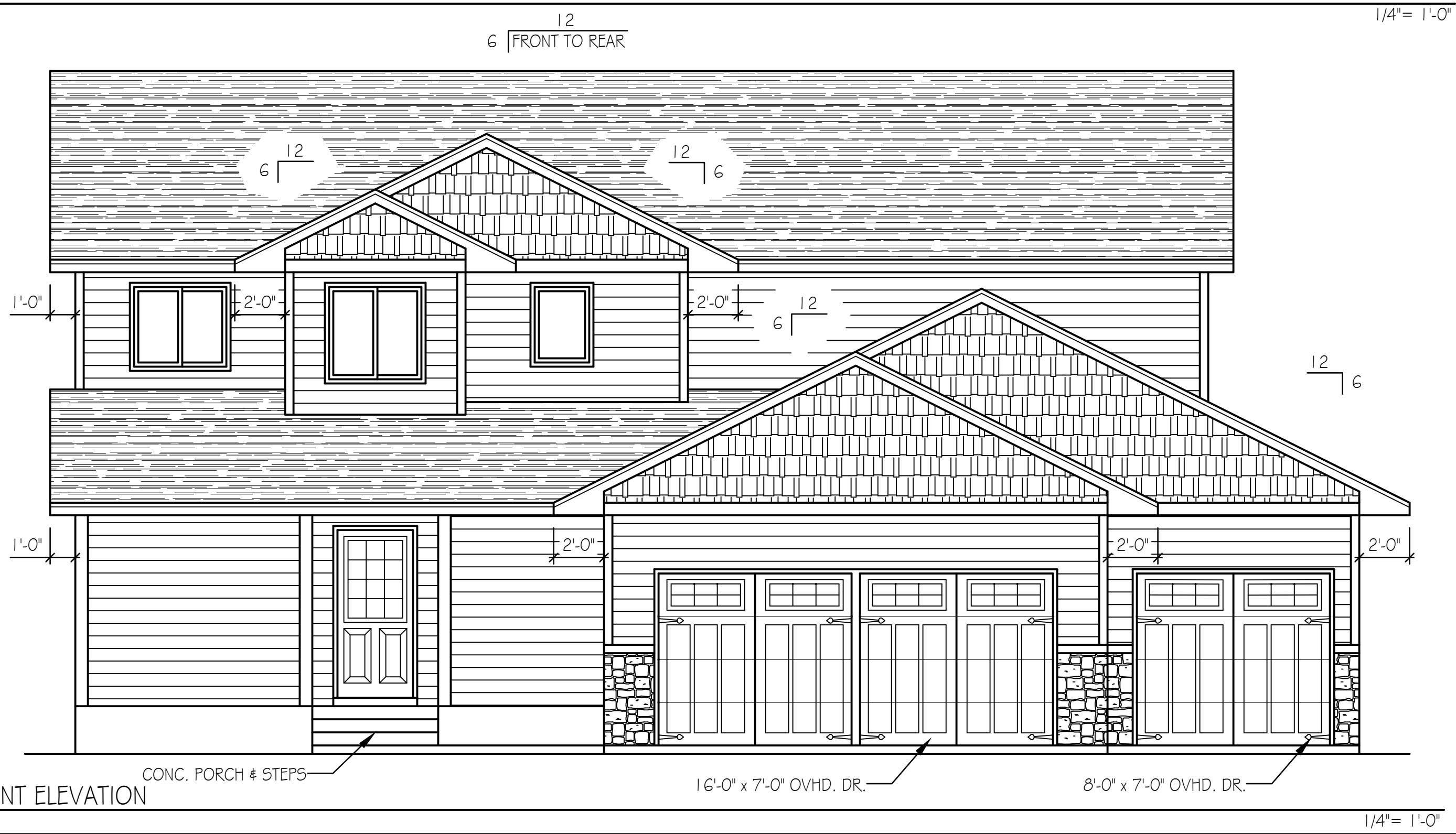


FRONT ELEVATION



FRONT ELEVATION

DISCLAIMER
 IN PREPARATION OF THIS PLAN EVERY ATTEMPT HAS BEEN MADE TO AVOID MISTAKES. DESIGNER CANNOT GUARANTEE AGAINST HUMAN ERROR. CONTRACTOR TO VERIFY ALL DIMENSIONS AND CONDITIONS AND BE RESPONSIBLE FOR THE SAME. THESE DESIGNS, CONCEPTS AND SPECIFICATIONS ARE INSTRUMENTS OF SERVICE AND AS SUCH REMAIN THE EXCLUSIVE PROPERTY OF COUNTRY LUMBER AND ARE NOT TO BE COPIED WITHOUT THE WRITTEN CONSENT OF COUNTRY LUMBER.

DESIGN FOR:
 THOMAS ALLEN HOMES
 HAVEN 8 MAIN LEVEL

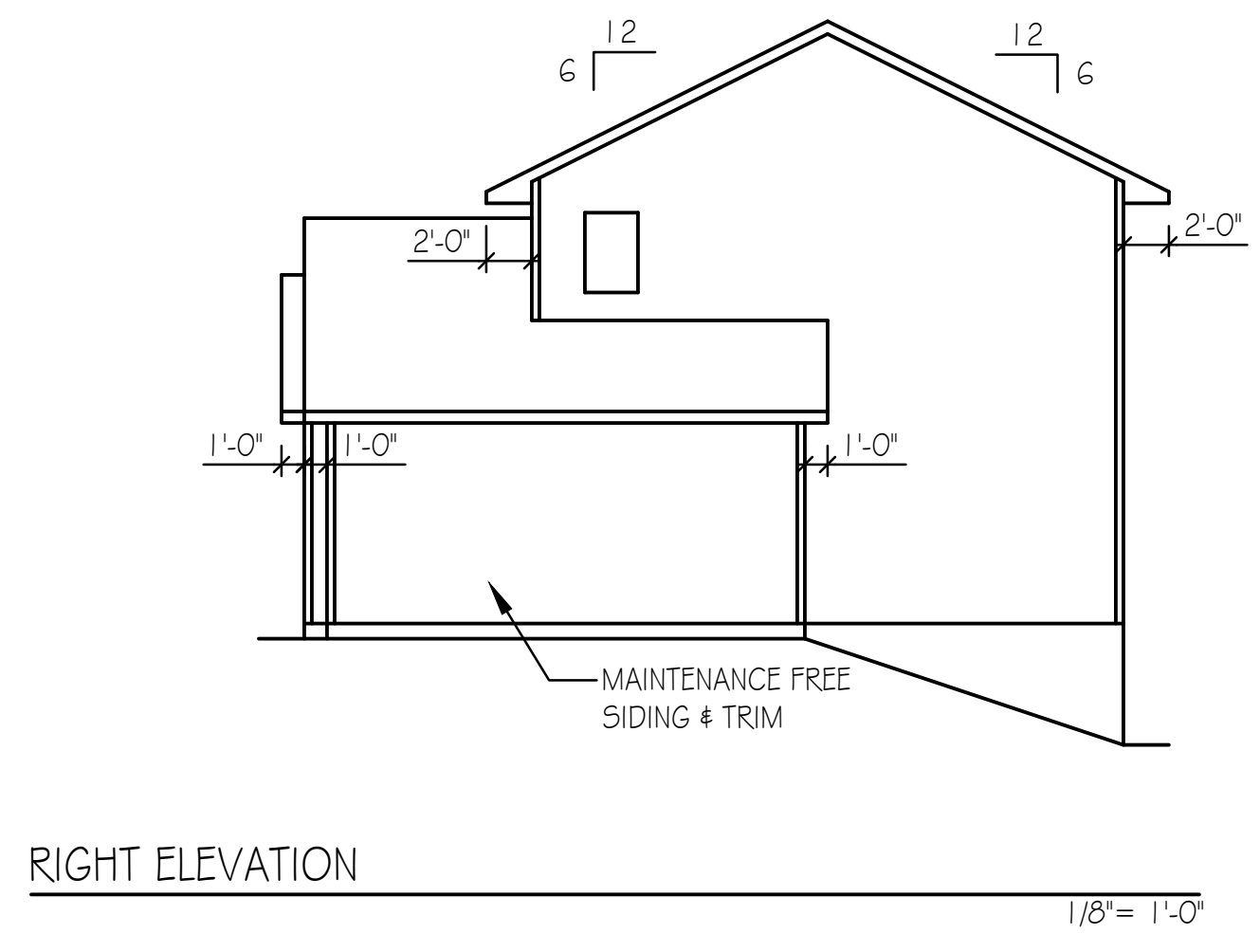
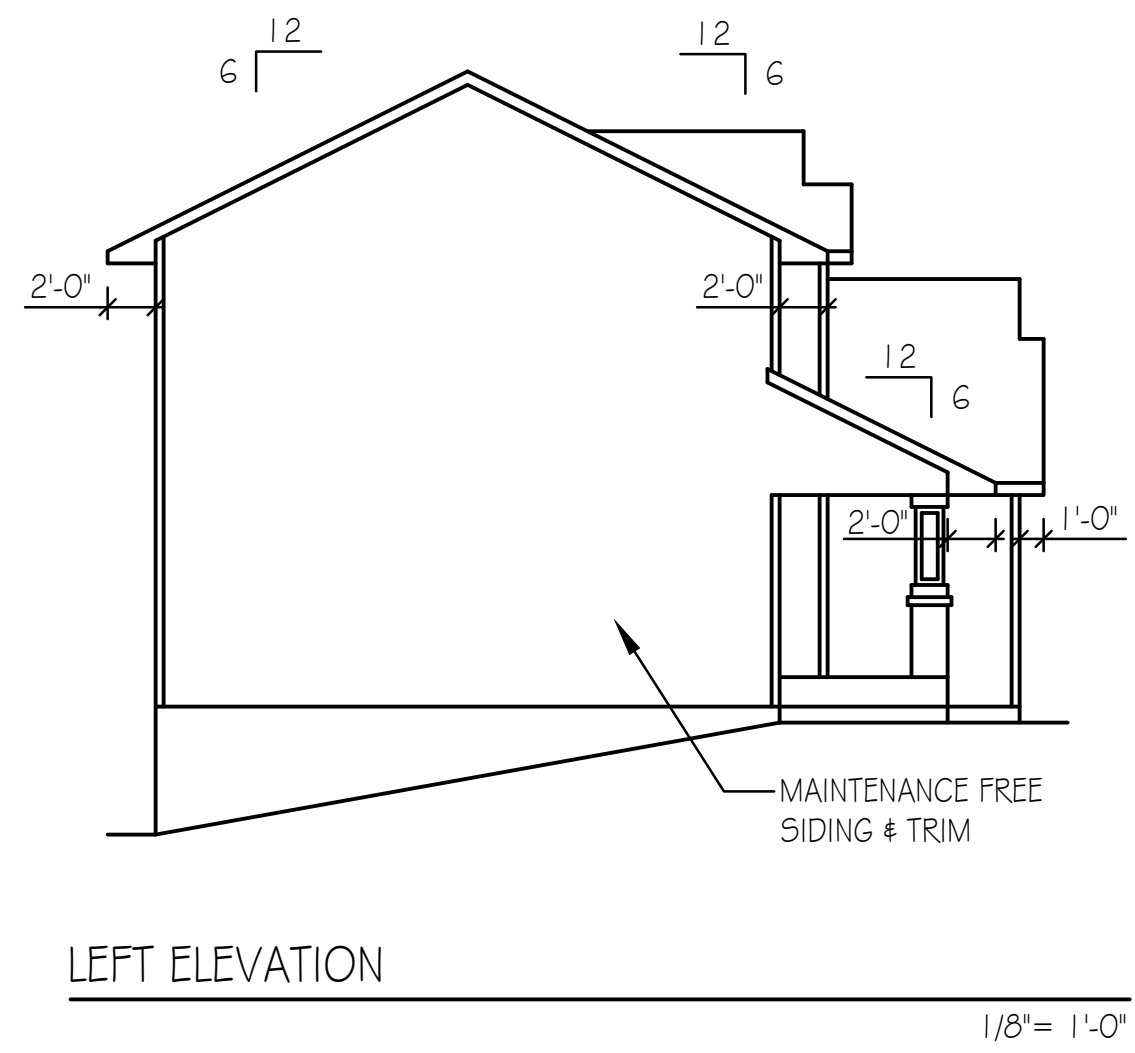
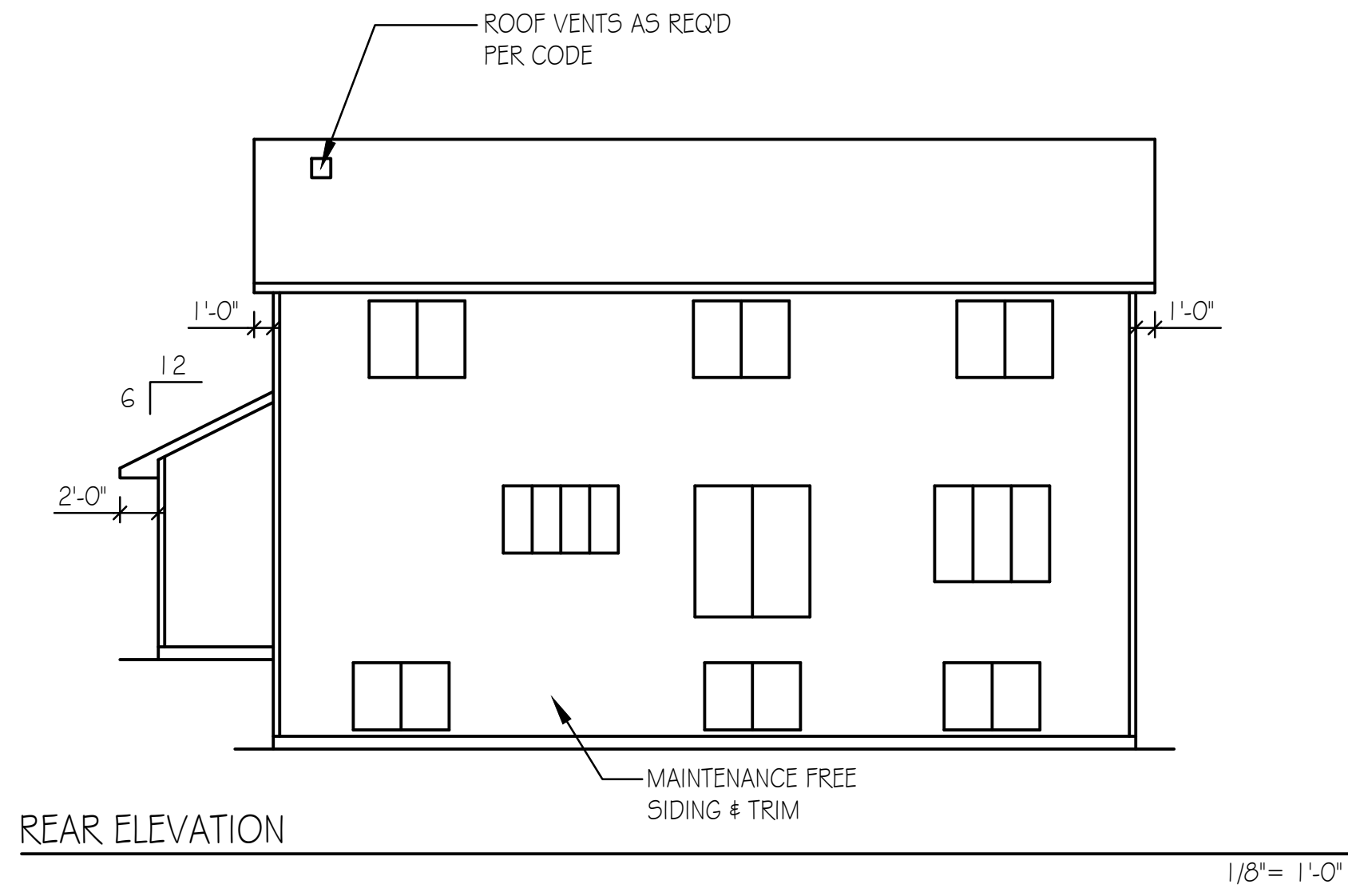
DRAWN BY: RK

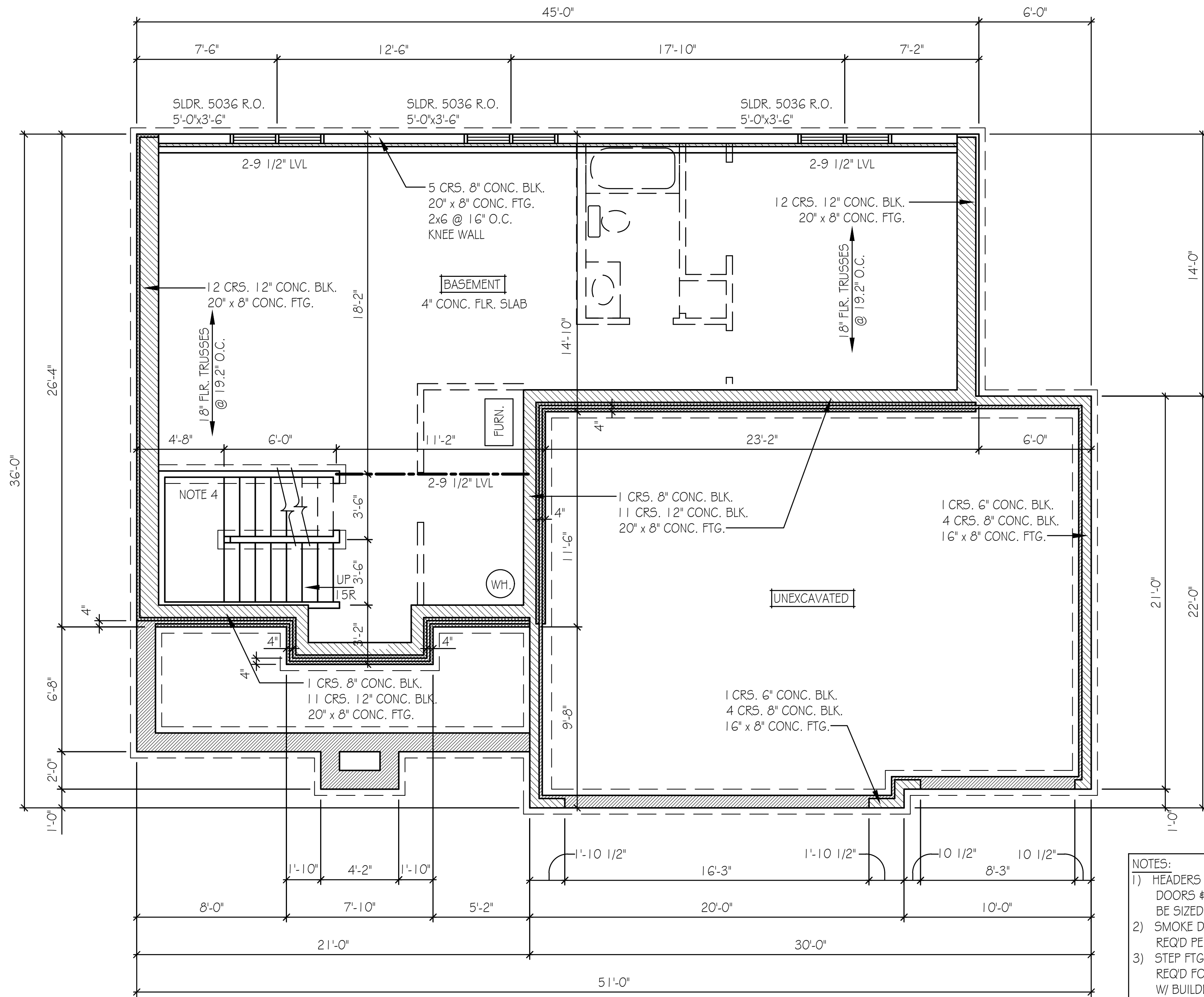
P: 07/21/21
 R: 07/27/21
 R: 10/06/21
 F: 10/06/21

CL#2021.133

DESIGN CENTER
 12575 OAK VIEW AVE. BECKER, MN. 55308
 PHONE: (763) 262-4750
 FAX: (763) 262-4445
 1-800-247-0295

COUNTRY LUMBER
MEMBER SINCE 1988

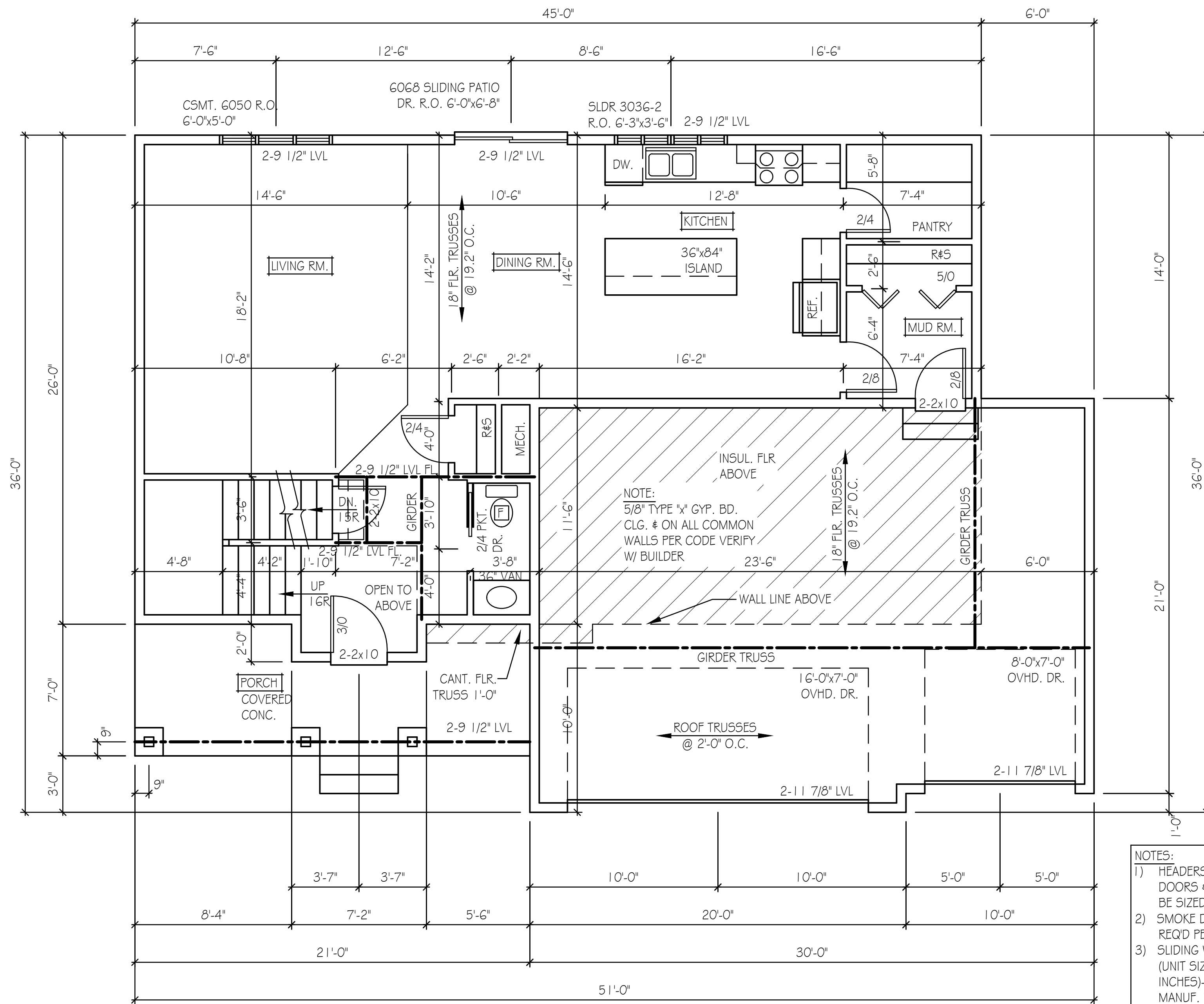




- NOTES:
- 1) HEADERS AT EXTERIOR DOORS & WINDOWS TO BE SIZED BY SUPPLIER
 - 2) SMOKE DETECTORS AS REQ'D PER CODE
 - 3) STEP FTG'S & FDN'S AS REQ'D FOR GRADE - VERIFY W/ BUILDER
 - 4) 1 CRS. 4" CURB BLK. 16" x 8" CONC. FTG. 2x4 @ 16" O.C. FULL WALL

BASEMENT PLAN

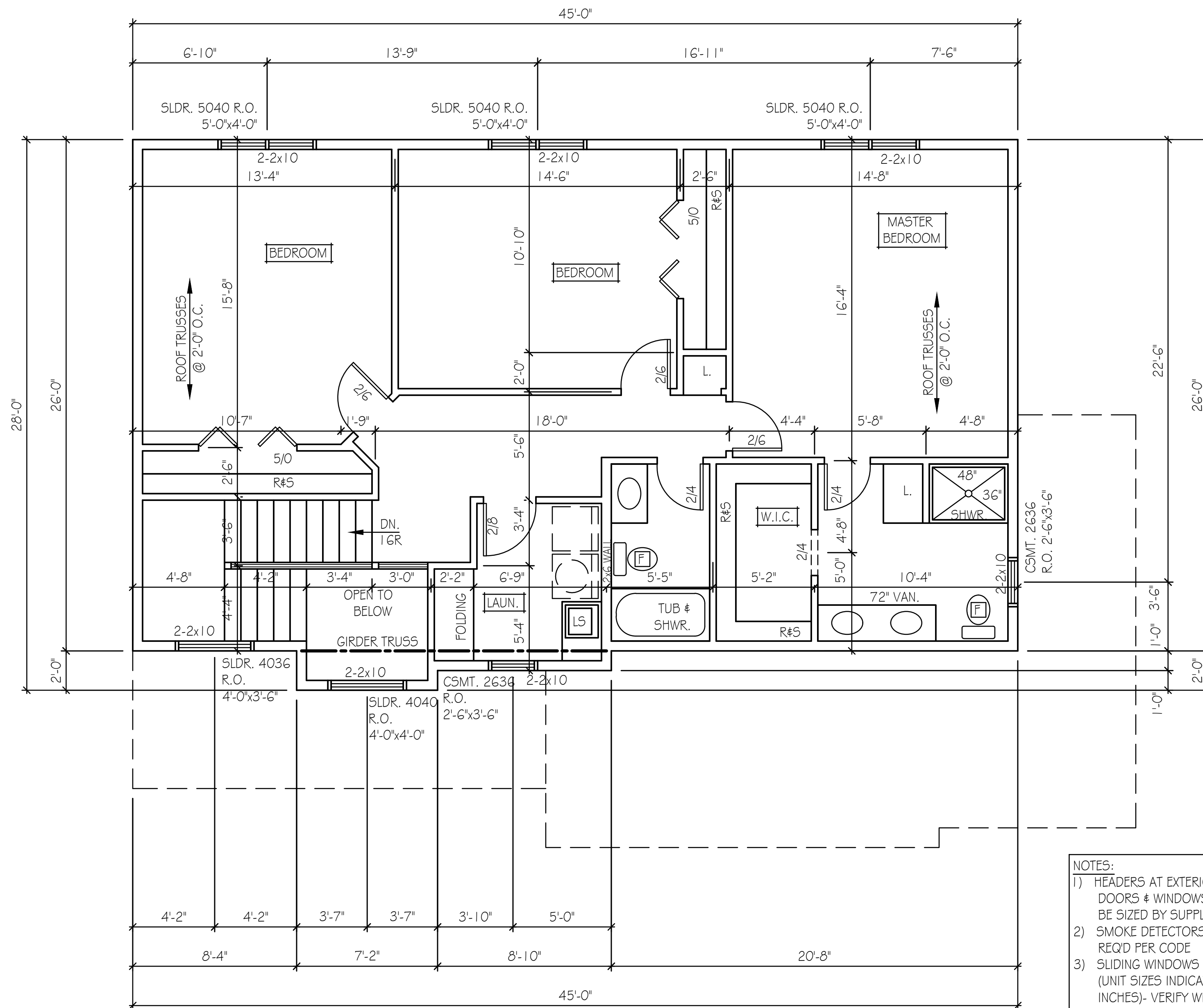
1/4" = 1'-0"



- NOTES:
- 1) HEADERS AT EXTERIOR DOORS & WINDOWS TO BE SIZED BY SUPPLIER
 - 2) SMOKE DETECTORS AS REQD PER CODE
 - 3) SLIDING WINDOWS (UNIT SIZES INDICATED IN INCHES)- VERIFY WINDOW MANUF. W/ BUILDER

FIRST FLOOR PLAN
914 SFT. (HOUSE) 632 SFT. (GARAGE)

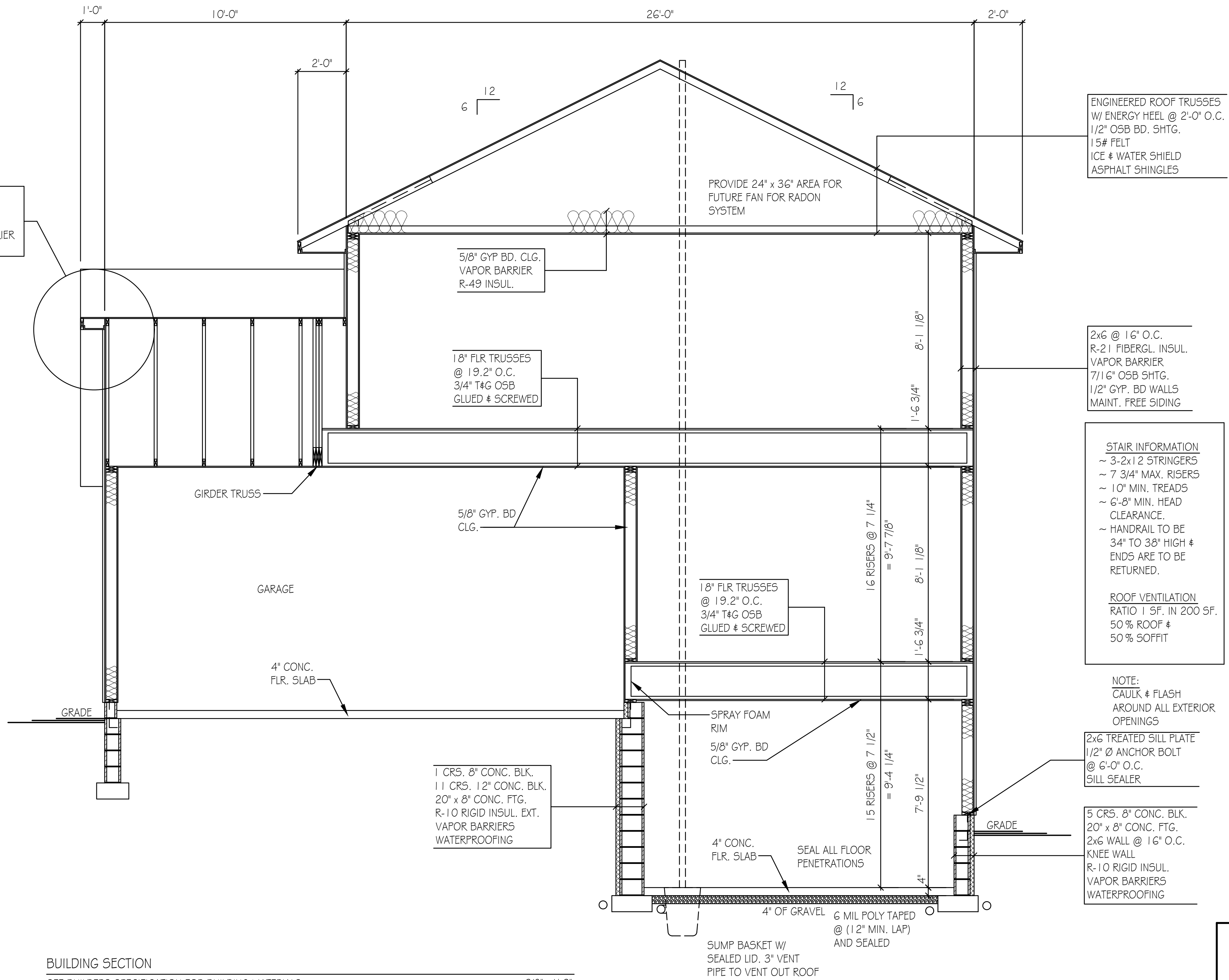
1/4" = 1'-0"



- NOTES:
- 1) HEADERS AT EXTERIOR DOORS & WINDOWS TO BE SIZED BY SUPPLIER
 - 2) SMOKE DETECTORS AS REQ'D PER CODE
 - 3) SLIDING WINDOWS (UNIT SIZES INDICATED IN INCHES)- VERIFY WINDOW MANUF. W/ BUILDER

SECOND FLOOR PLAN
1193 SFT. (HOUSE)

1/4" = 1'-0"



2x6 SUBFASCIA
ALUM. SOFFIT & FASCIA
CONT. SOFFIT VENT
RIGID WIND WASH BARRIER
AIR CHUTE

ENGINEERED ROOF TRUSSES
W/ ENERGY HEEL @ 2'-0" O.C.
1/2" OSB BD. SHTG.
15# FELT
ICE & WATER SHIELD
ASPHALT SHINGLES

5/8" GYP. BD. CLG.
VAPOR BARRIER
R-49 INSUL.

PROVIDE 24" x 36" AREA FOR
FUTURE FAN FOR RADON
SYSTEM

18" FLR TRUSSES
@ 19.2" O.C.
3/4" T&G OSB
GLUED & SCREWED

2x6 @ 16" O.C.
R-21 FIBERGL. INSUL.
VAPOR BARRIER
7/16" OSB SHTG.
1/2" GYP. BD WALLS
MAINT. FREE SIDING

STAIR INFORMATION
~ 3-2x12 STRINGERS
~ 7 3/4" MAX. RISERS
~ 10" MIN. TREADS
~ 6'-8" MIN. HEAD
CLEARANCE.
~ HANDRAIL TO BE
34" TO 38" HIGH &
ENDS ARE TO BE
RETURNED.

ROOF VENTILATION
RATIO 1 SF. IN 200 SF.
50% ROOF &
50% SOFFIT

GIRDER TRUSS

5/8" GYP. BD.
CLG.

GARAGE

18" FLR TRUSSES
@ 19.2" O.C.
3/4" T&G OSB
GLUED & SCREWED

4" CONC.
FLR. SLAB

SPRAY FOAM
RIM
5/8" GYP. BD
CLG.

GRADE

1 CRS. 8" CONC. BLK.
11 CRS. 12" CONC. BLK.
20" x 8" CONC. FTG.
R-10 RIGID INSUL. EXT.
VAPOR BARRIERS
WATERPROOFING

NOTE:
CAULK & FLASH
AROUND ALL EXTERIOR
OPENINGS

2x6 TREATED SILL PLATE
1/2" Ø ANCHOR BOLT
@ 6'-0" O.C.
SILL SEALER

4" CONC.
FLR. SLAB

5 CRS. 8" CONC. BLK.
20" x 8" CONC. FTG.
2x6 WALL @ 16" O.C.
KNEE WALL
R-10 RIGID INSUL.
VAPOR BARRIERS
WATERPROOFING

4" OF GRAVEL
6 MIL POLY TAPED
@ (12" MIN. LAP)
AND SEALED

GRADE

SUMP BASKET W/
SEALED LID. 3" VENT
PIPE TO VENT OUT ROOF

BUILDING SECTION
SEE BUILDERS SPECIFICATION FOR BUILDING MATERIALS

3/8" = 1'-0"