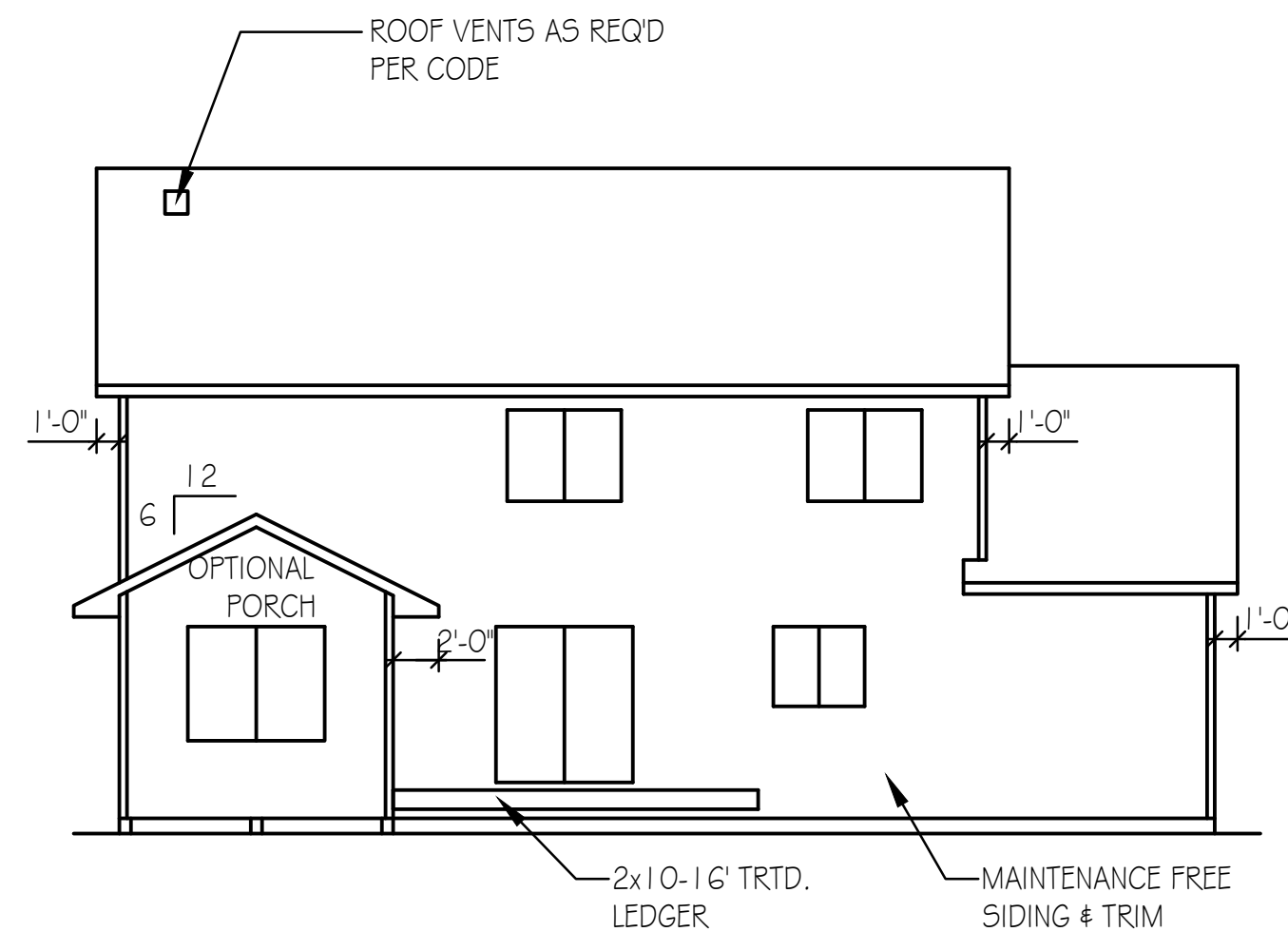


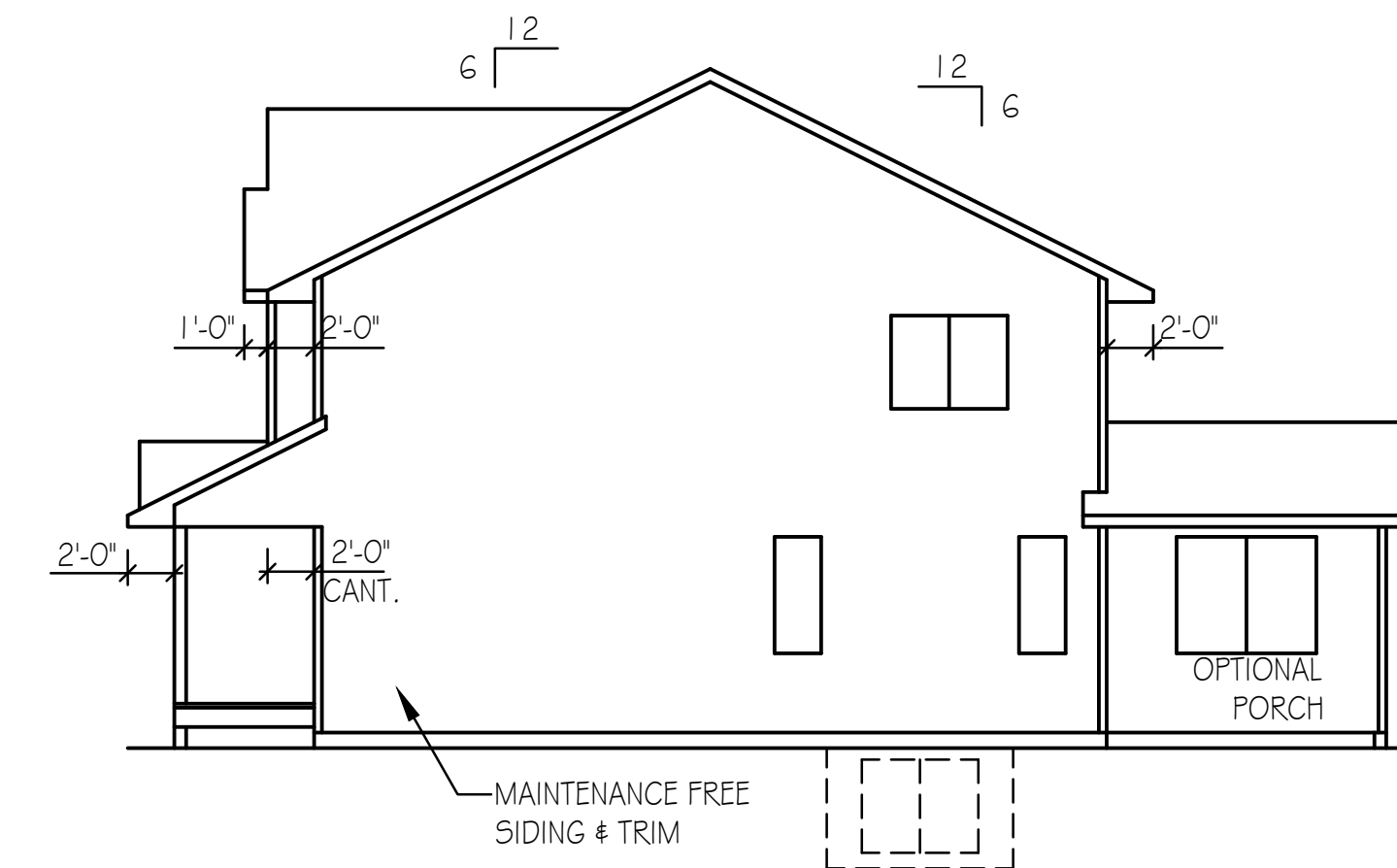
LEFT ELEVATION

1/8" = 1'-0"



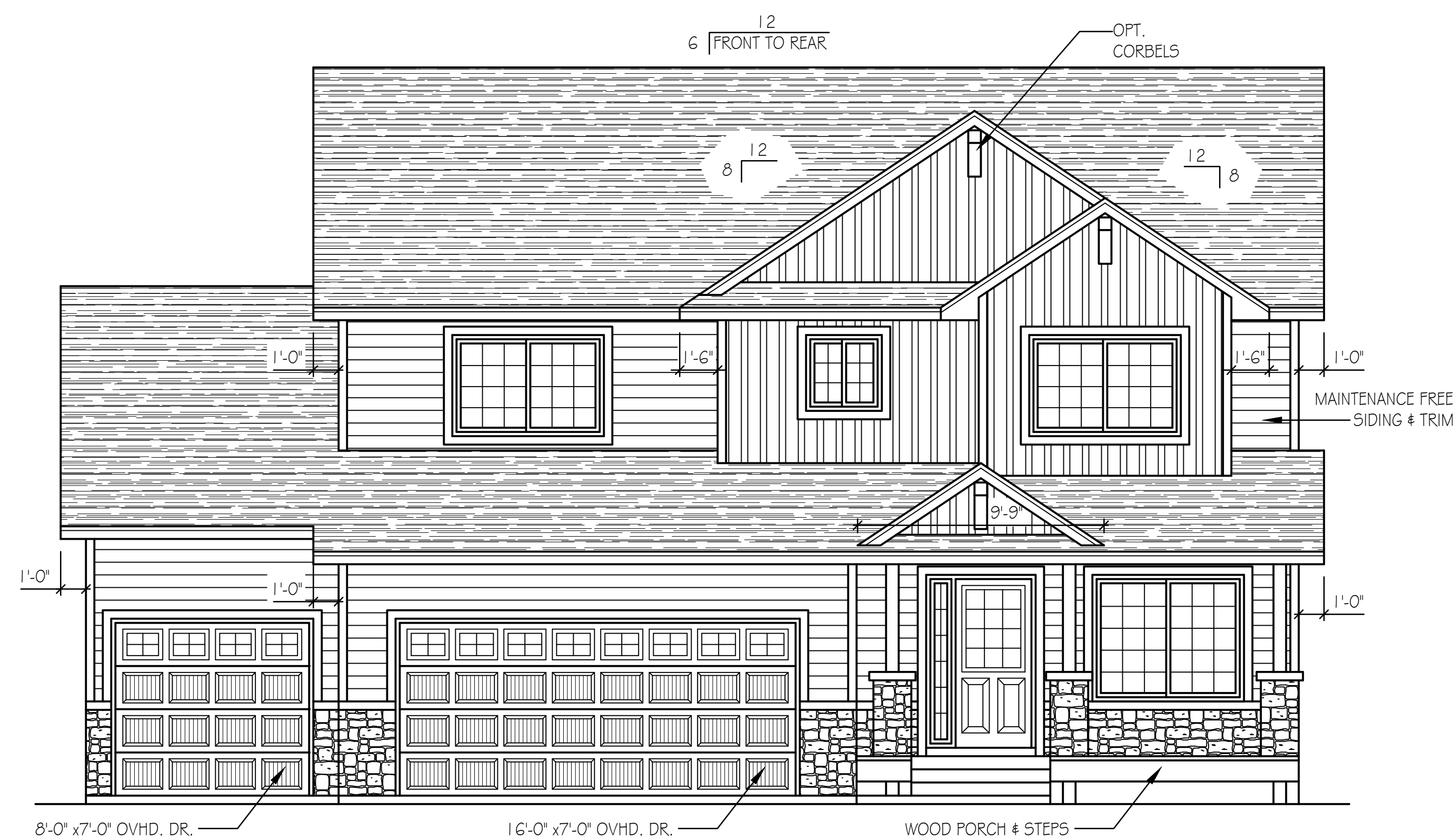
REAR ELEVATION

1/8" = 1'-0"



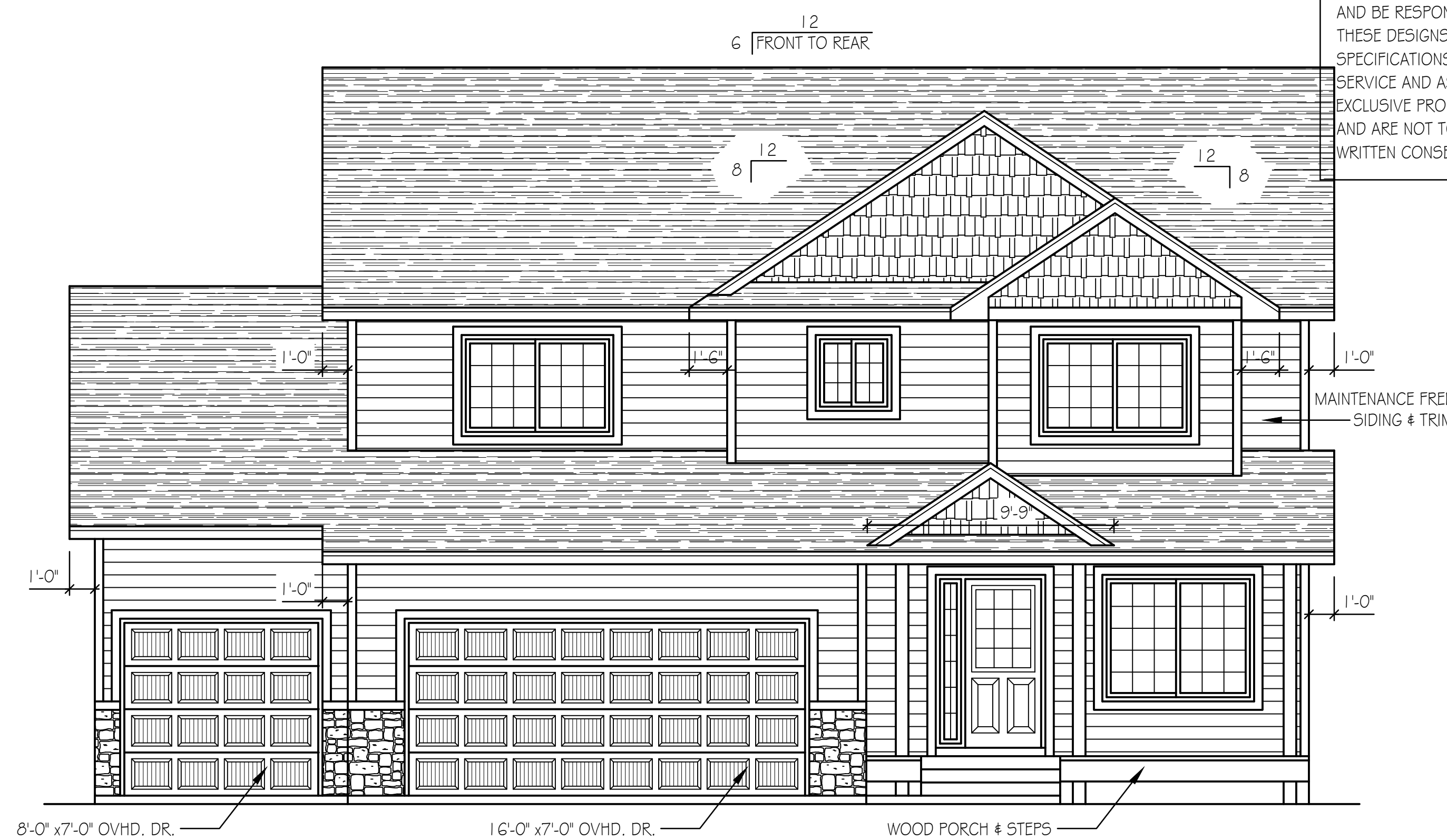
RIGHT ELEVATION

1/8" = 1'-0"



FRONT ELEVATION UPGRADE

1/4" = 1'-0"



FRONT ELEVATION STANDARD

1/4" = 1'-0"

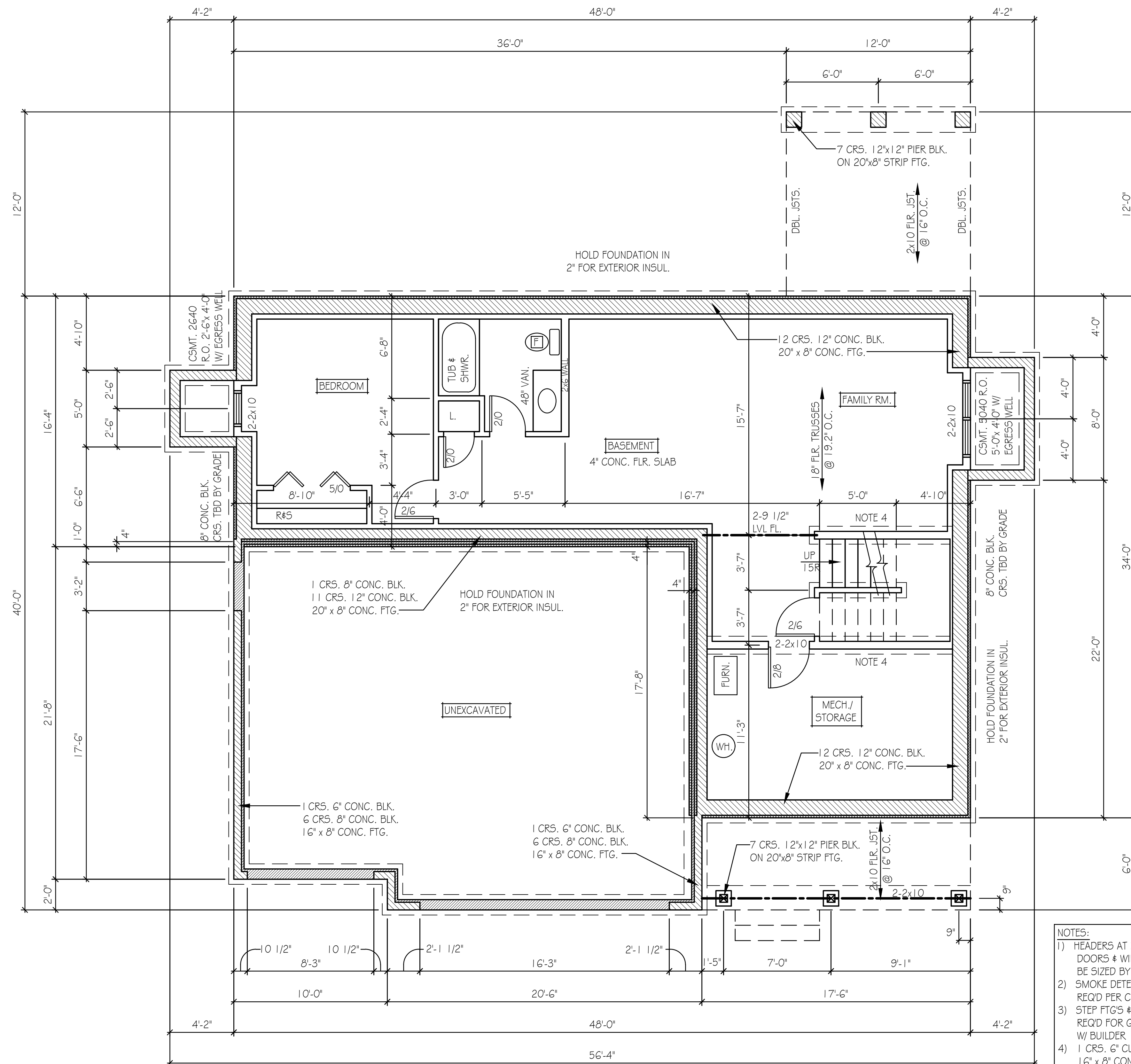
DISCLAIMER
 IN PREPARATION OF THIS PLAN EVERY ATTEMPT HAS BEEN MADE TO AVOID MISTAKES. DESIGNER CANNOT GUARANTEE AGAINST HUMAN ERROR. CONTRACTOR TO VERIFY ALL DIMENSIONS AND CONDITIONS AND BE RESPONSIBLE FOR THE SAME. THESE DESIGNS, CONCEPTS AND SPECIFICATIONS ARE INSTRUMENTS OF SERVICE AND AS SUCH REMAIN THE EXCLUSIVE PROPERTY OF COUNTRY LUMBER AND ARE NOT TO BE COPIED WITHOUT THE WRITTEN CONSENT OF COUNTRY LUMBER.

DESIGN FOR:
 THOMAS ALLEN HOMES
 STONEHURST

DESIGN CENTER
 12575 OAK VIEW AVE. BECKER, MN. 55308
 PHONE: (763) 262-4750
 FAX: (763) 262-4755
 1-800-247-0295

COUNTRY LUMBER

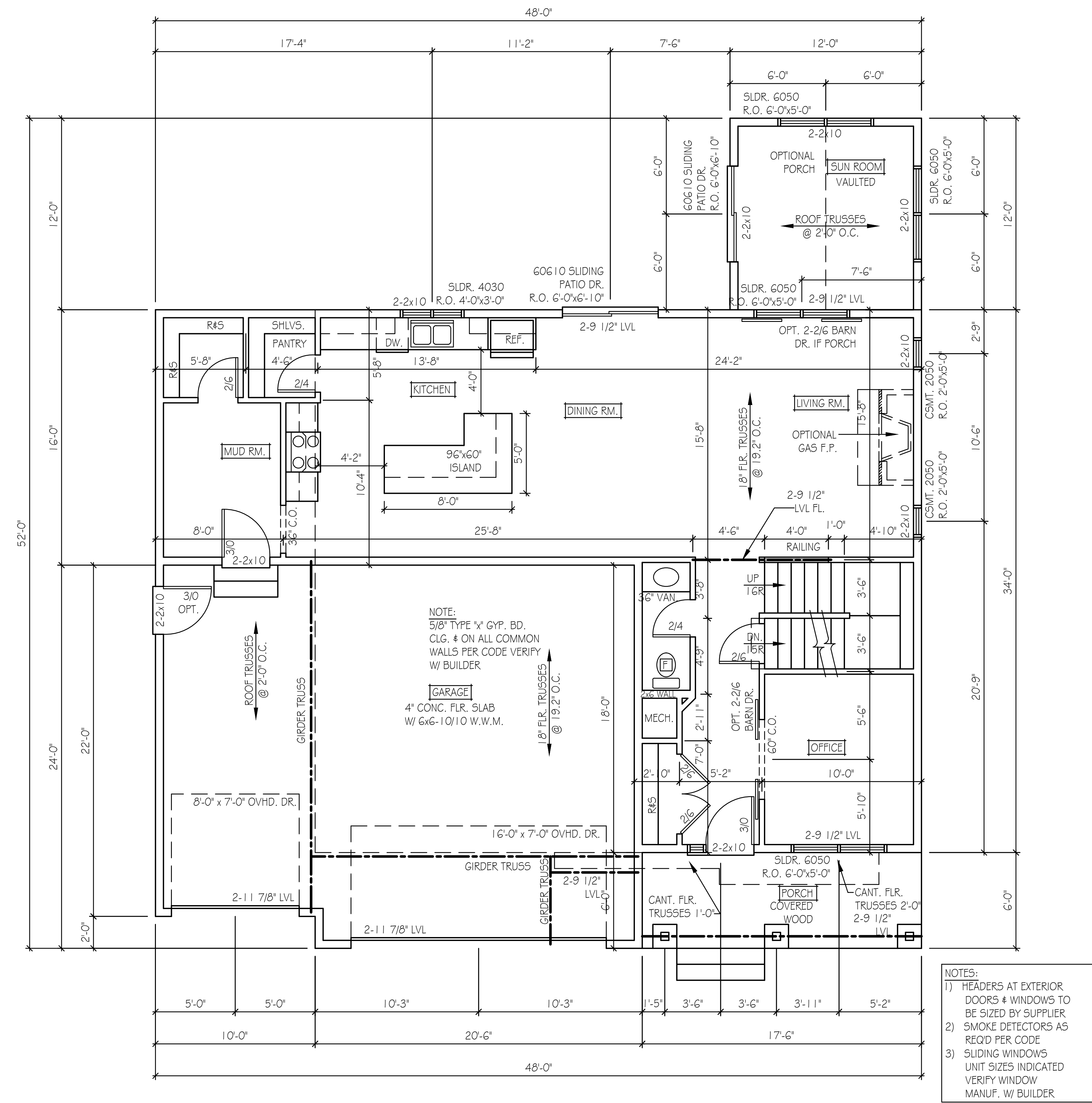
C:\Users\Country Lumber\Desktop\DRAWINGS\2021 Drawings\21.091 THOMAS ALLEN HOMES\STONEHURST 1.dwg, 8/18/2021 8:45:43 AM, DWG To PDF.pc3



- NOTES:
- 1) HEADERS AT EXTERIOR DOORS & WINDOWS TO BE SIZED BY SUPPLIER
 - 2) SMOKE DETECTORS AS REQ'D PER CODE
 - 3) STEP FTGS & FDN'S AS REQ'D FOR GRADE - VERIFY W/ BUILDER
 - 4) 1 CRS. 6" CURB BLK. 16" x 8" CONC. FTG. 2x6 @ 16" O.C. FULL WALL

BASEMENT PLAN

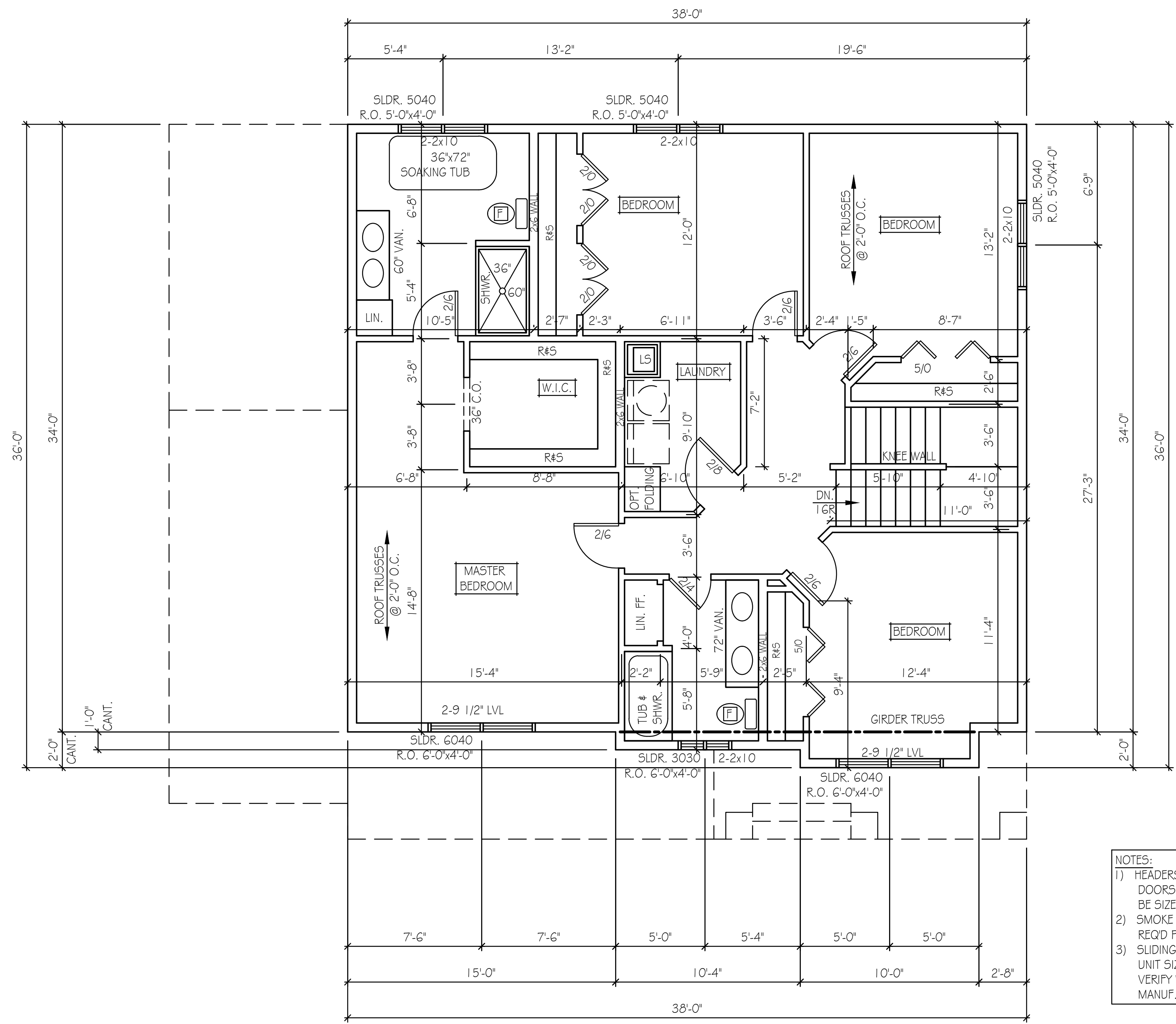
1/4" = 1'-0"



FIRST FLOOR PLAN

1092 SFT. (HOUSE) 703 SFT. (GARAGE)
144 SFT. (PORCH)

1/4" = 1'-0"

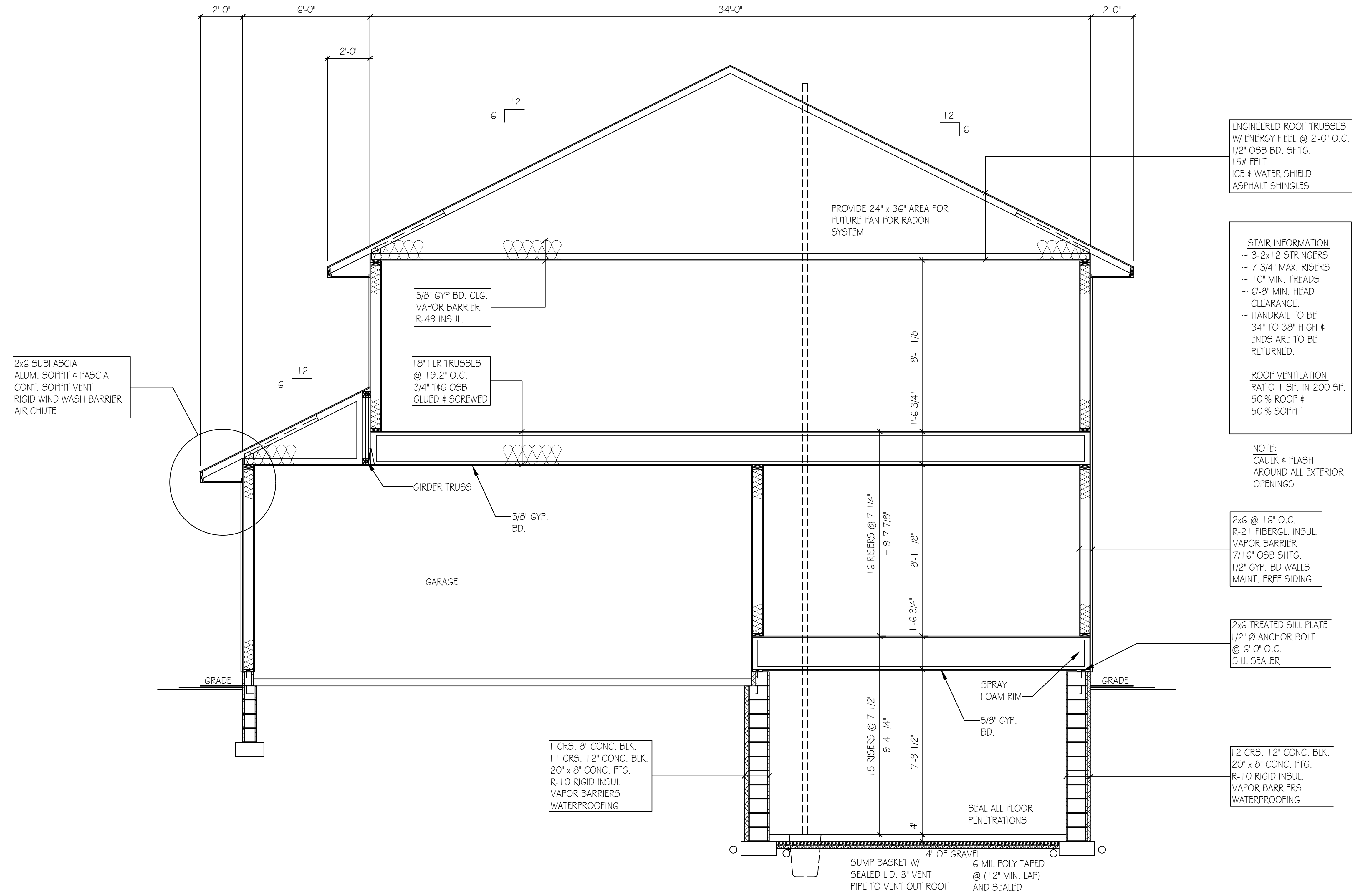


- NOTES:
- 1) HEADERS AT EXTERIOR DOORS & WINDOWS TO BE SIZED BY SUPPLIER
 - 2) SMOKE DETECTORS AS REQ'D PER CODE
 - 3) SLIDING WINDOWS UNIT SIZES INDICATED VERIFY WINDOW MANUF. W/ BUILDER

SECOND FLOOR PLAN
1322 SFT. (HOUSE)

1/4" = 1'-0"

C:\Users\County Lumber\Desktop\DRAWINGS\2021 Drawings\21.091 THOMAS ALLEN HOMES\STONHURST 6.dwg, 7/30/2021 2:11:26 PM, DWG To PDF.pc3



BUILDING SECTION
 SEE BUILDERS SPECIFICATION FOR BUILDING MATERIALS

3/8"=1'-0"