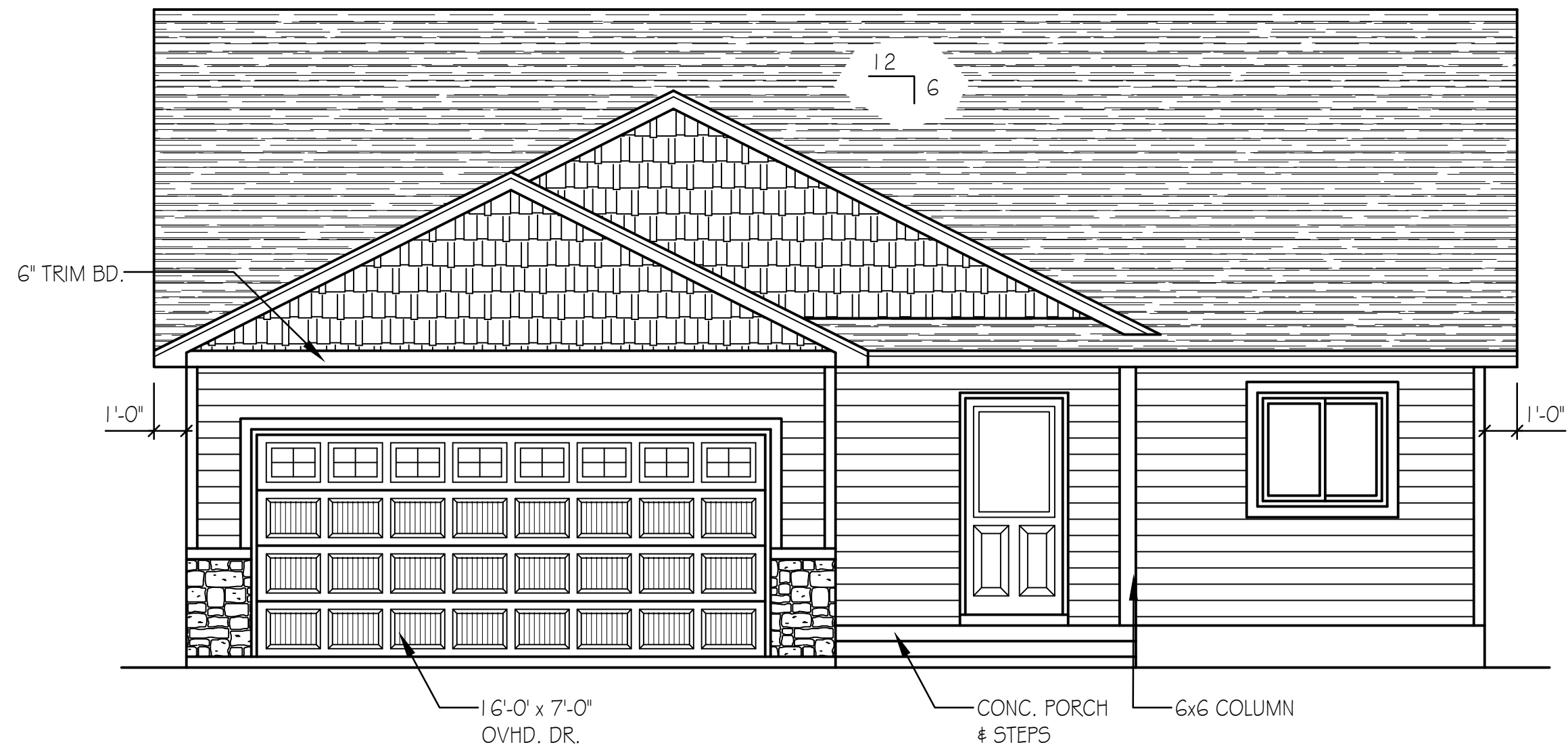


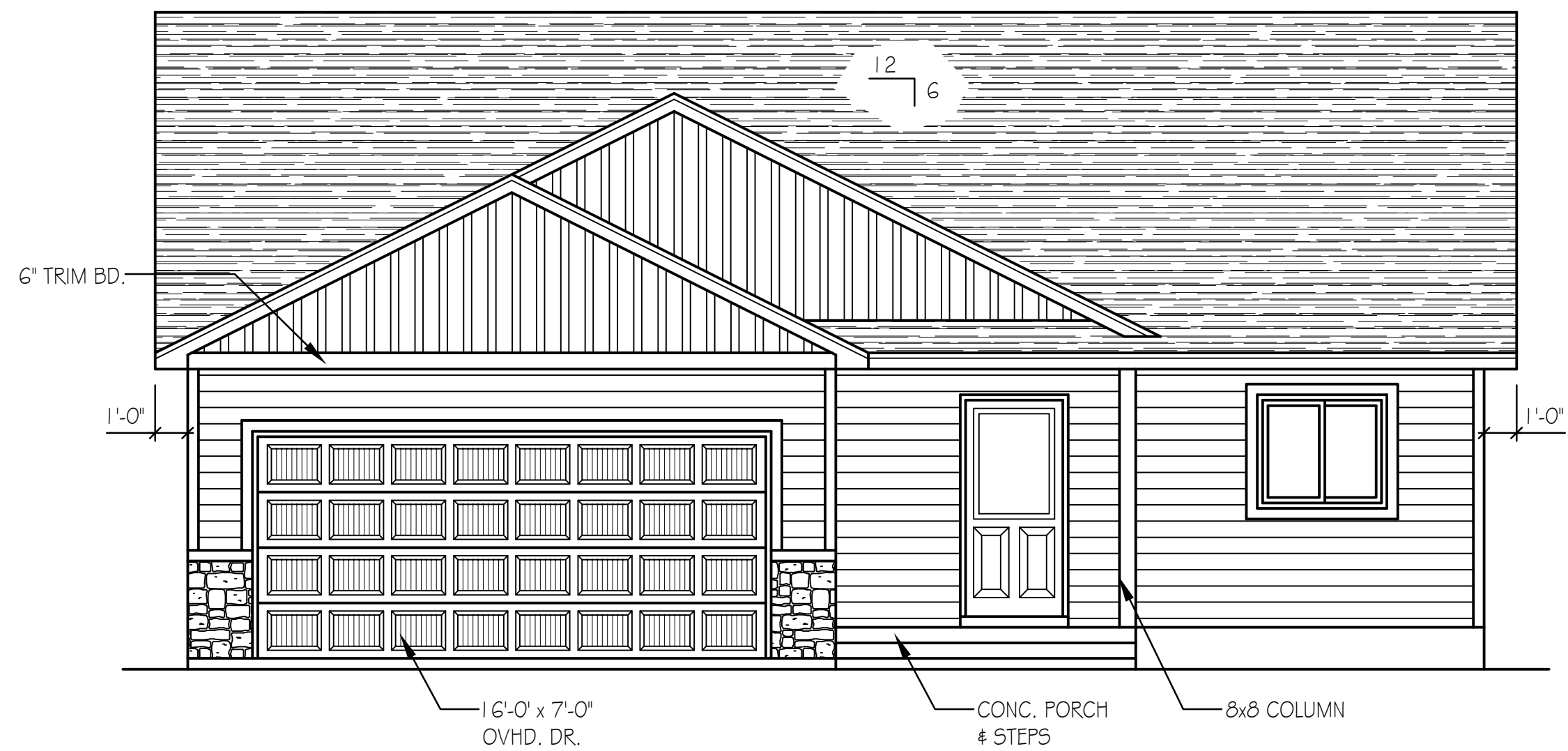
12  
6 FRONT TO REAR



FRONT ELEVATION UPGRDE

1/4" = 1'-0"

12  
6 FRONT TO REAR



FRONT ELEVATION STANDARD

1/4" = 1'-0"

**DISCLAIMER**

IN PREPARATION OF THIS PLAN EVERY ATTEMPT HAS BEEN MADE TO AVOID MISTAKES. DESIGNER CANNOT GUARANTEE AGAINST HUMAN ERROR. CONTRACTOR TO VERIFY ALL DIMENSIONS AND CONDITIONS AND BE RESPONSIBLE FOR THE SAME. THESE DESIGNS, CONCEPTS AND SPECIFICATIONS ARE INSTRUMENTS OF SERVICE AND AS SUCH REMAIN THE EXCLUSIVE PROPERTY OF COUNTRY LUMBER AND ARE NOT TO BE COPIED WITHOUT THE WRITTEN CONSENT OF COUNTRY LUMBER.

**DESIGN CENTER**  
 12575 OAK VIEW AVE. BECKER, MN. 55308  
 PHONE: (763) 262-4750  
 FAX: (763) 262-4445  
 1-800-247-0295

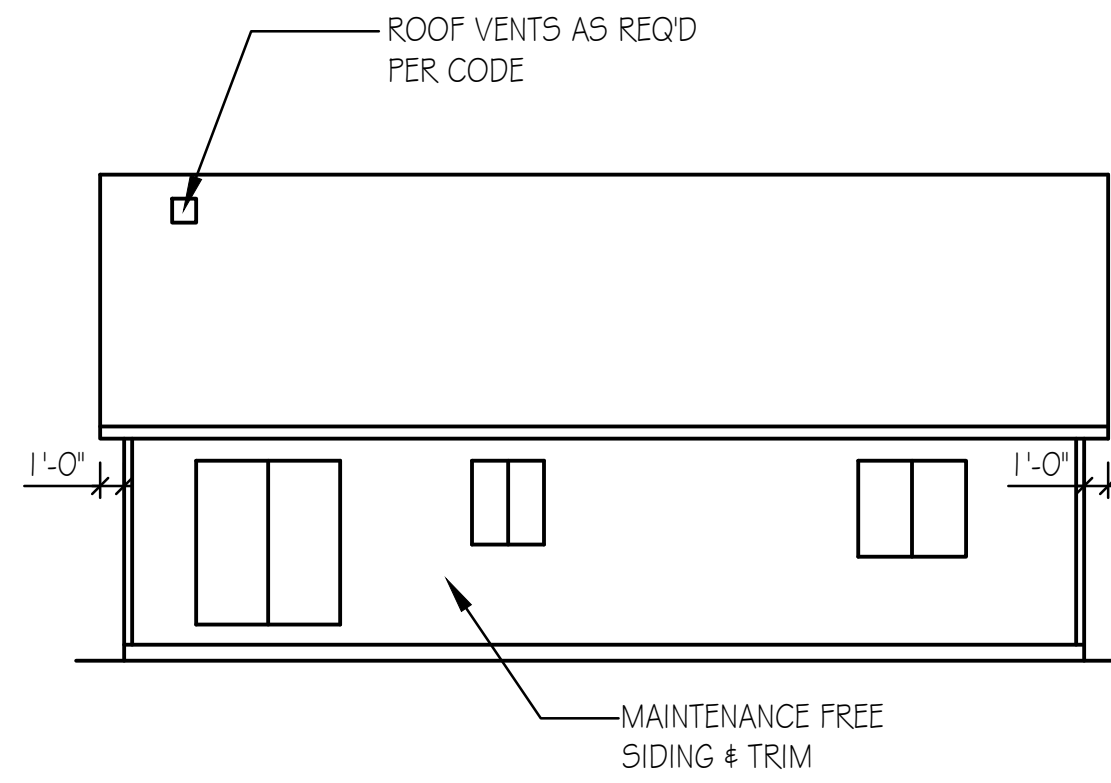
**COUNTRY LUMBER**  
INDEPENDENT

DESIGN FOR:  
THOMAS ALLEN HOMES  
WILLOW

DRAWN BY: RK

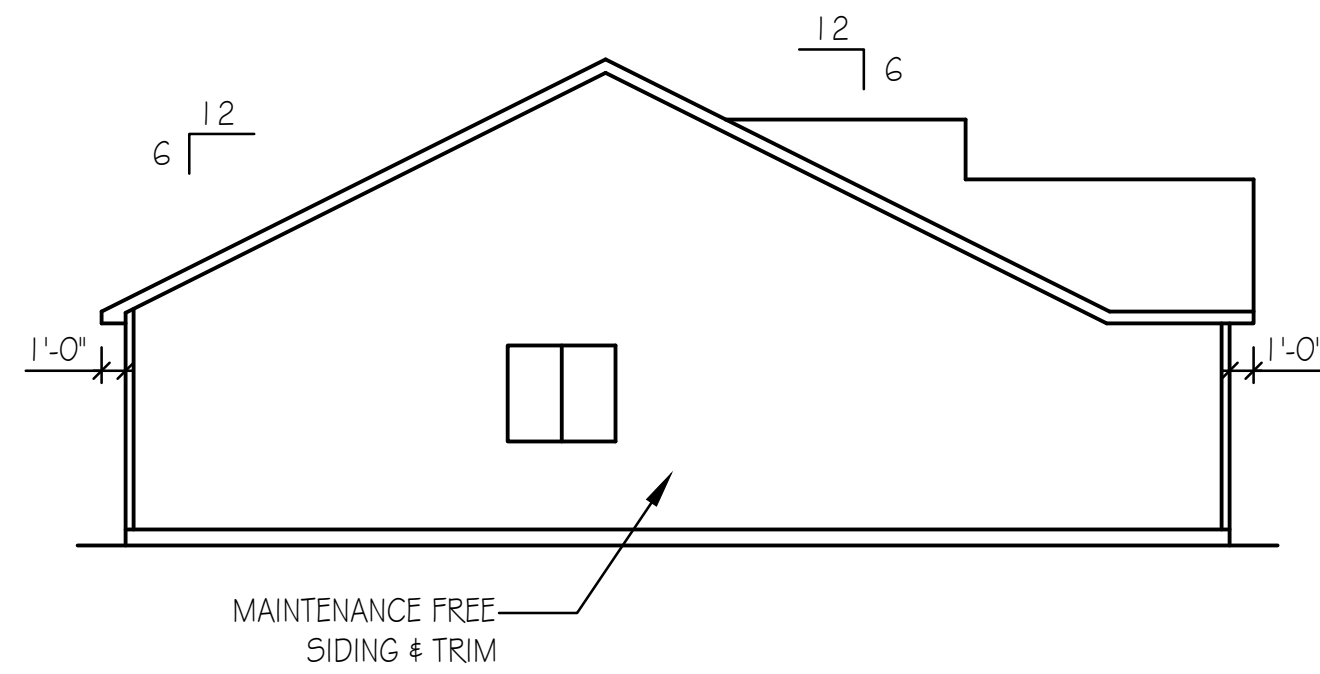
CL#2021.136

P: 08/10/21  
R: 08/18/21  
R: 10/08/21  
F: 10/08/21



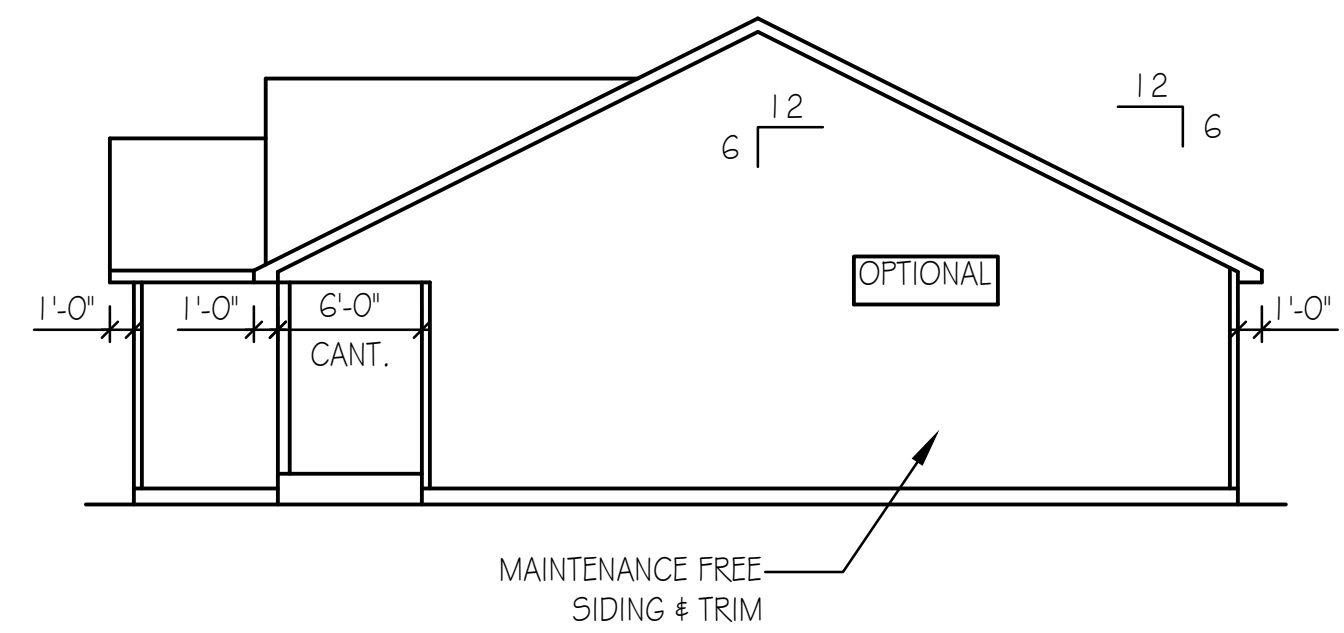
REAR ELEVATION

1/8" = 1'-0"



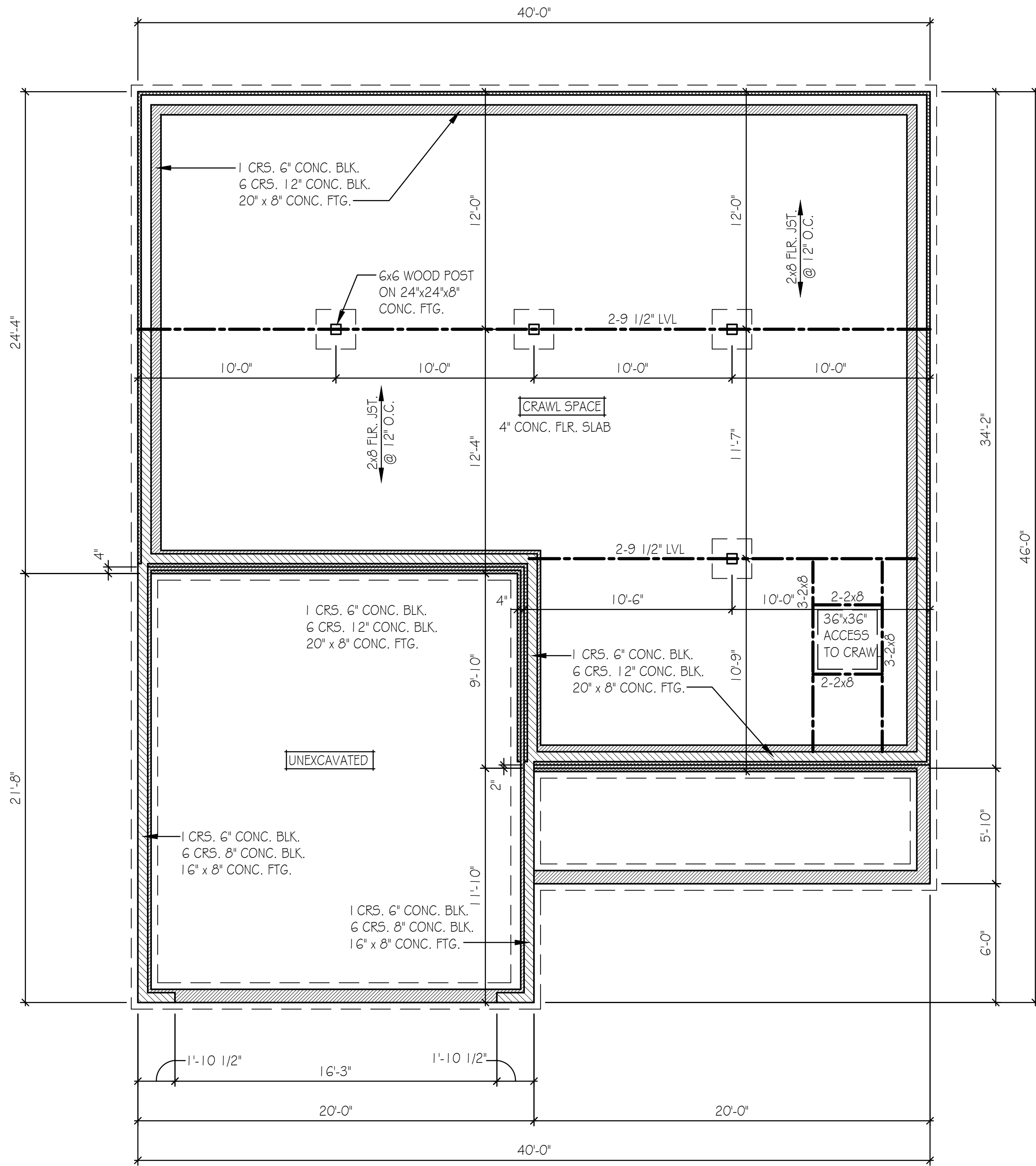
LEFT ELEVATION

1/8" = 1'-0"



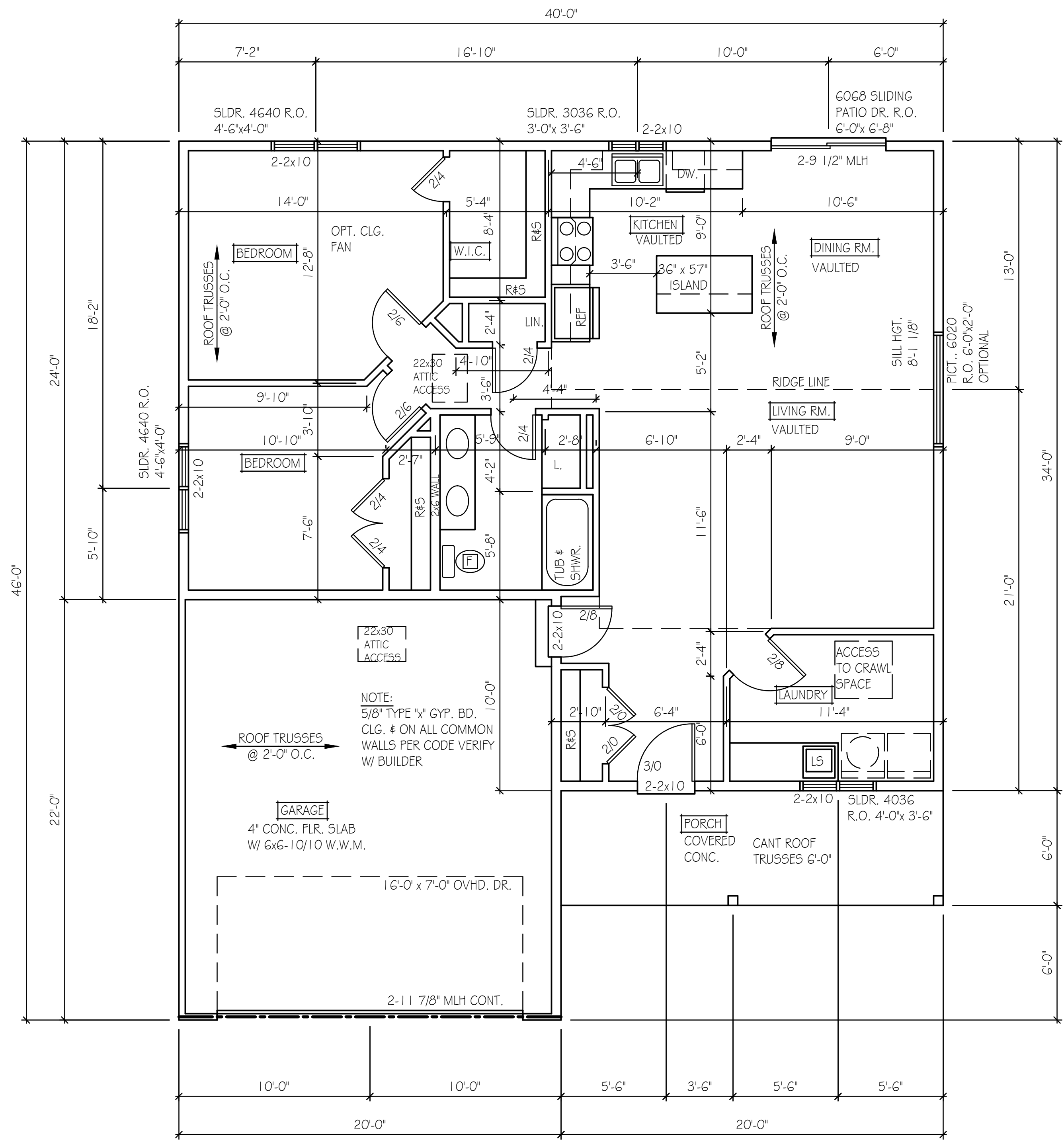
RIGHT ELEVATION

1/8" = 1'-0"



BASEMENT PLAN

1/4" = 1'-0"



NOTE:  
 5/8" TYPE "X" GYP. BD.  
 CLG. # ON ALL COMMON  
 WALLS PER CODE VERIFY  
 W/ BUILDER

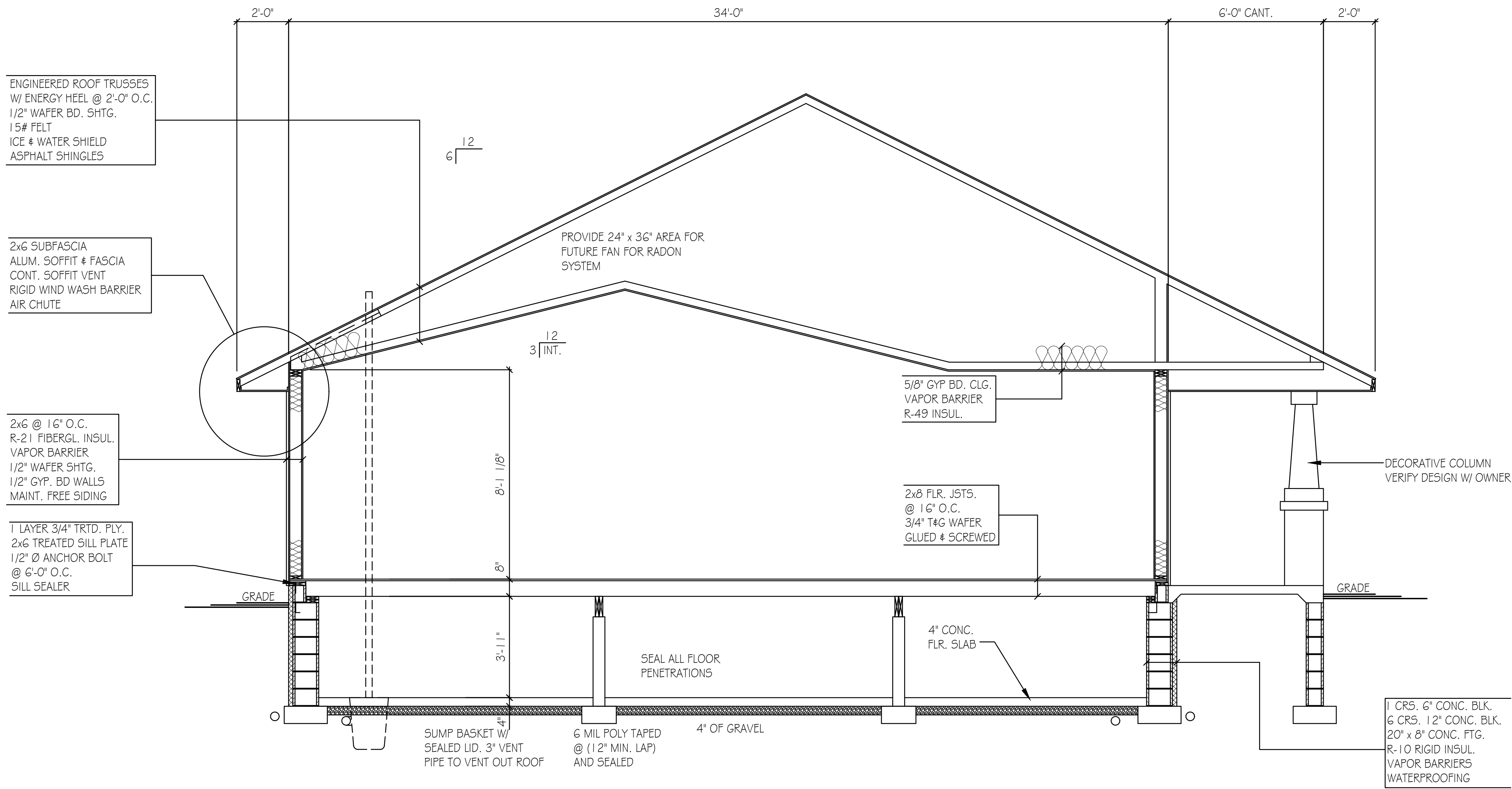
- NOTES:
- 1) HEADERS AT EXTERIOR DOORS & WINDOWS TO BE SIZED BY SUPPLIER
  - 2) SMOKE DETECTORS AS REQ'D PER CODE
  - 3) SLIDER WINDOWS (UNIT SIZES INDICATED IN INCHES)- VERIFY WINDOW MANUF. W/ BUILDER

FLOOR PLAN

1165 SFT. (HOUSE) 440 SFT. (GARAGE)

1/4" = 1'-0"

C:\Users\Cuntry Lumber\Desktop\DRAWINGS\2021 Drawings\21.136 TAH\SPILT 6.dwg, 8/18/2021 2:38:03 PM, DWG To PDF.pc3



BUILDING SECTION  
SEE BUILDERS SPECIFICATION FOR BUILDING MATERIALS

3/8" = 1'-0"