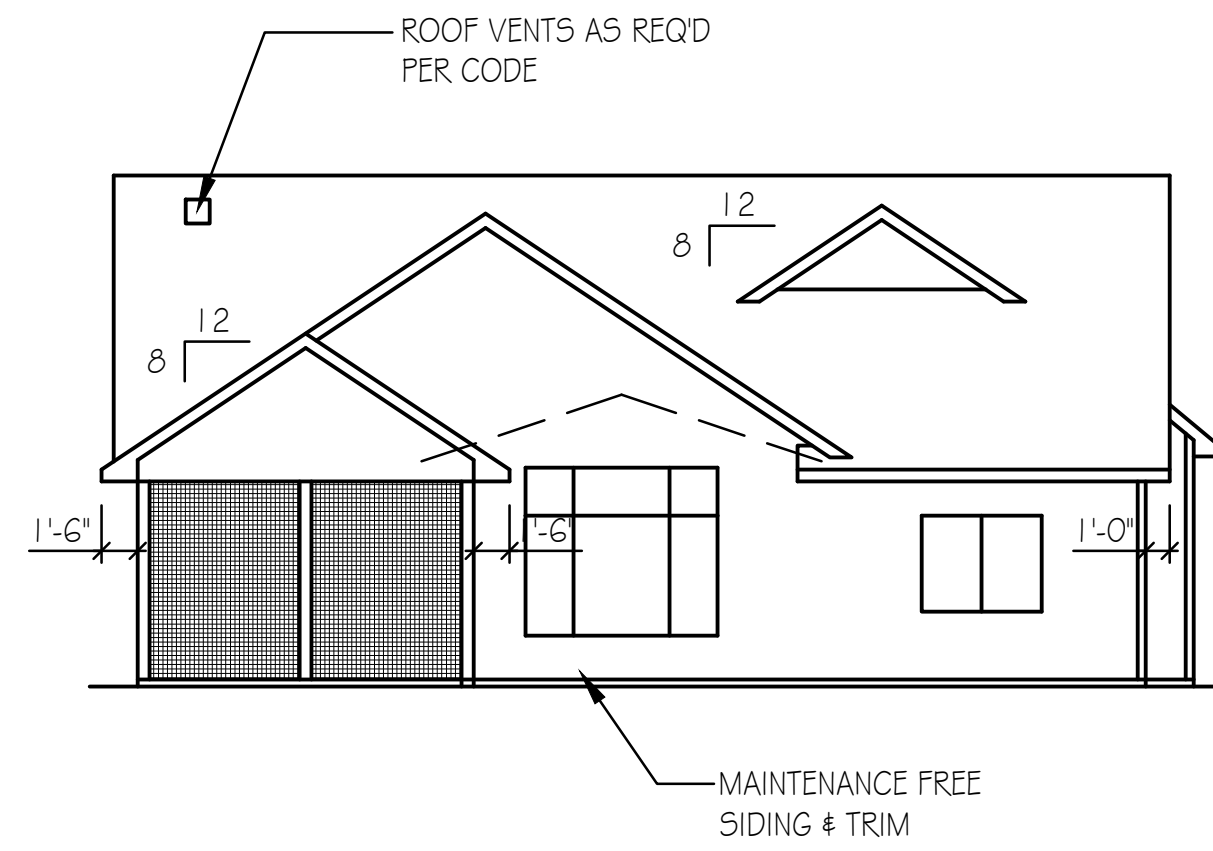


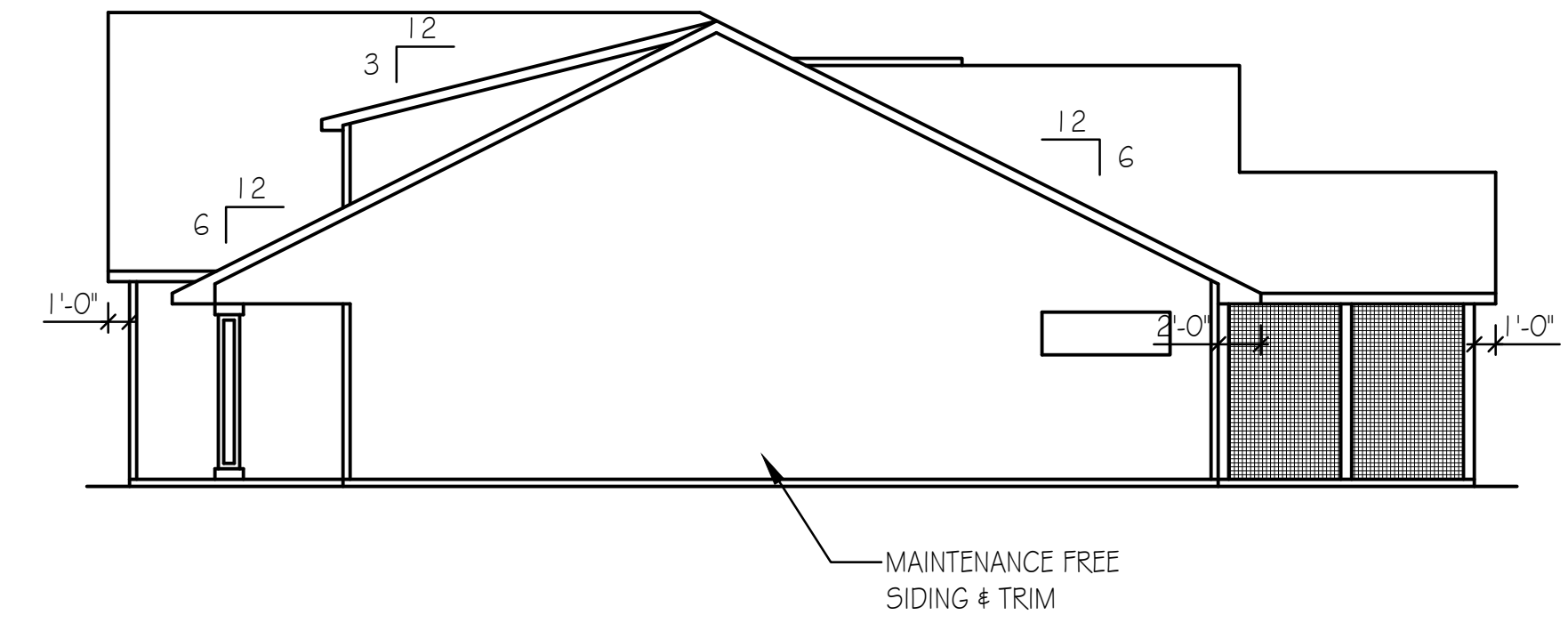
LEFT ELEVATION

1/8" = 1'-0"



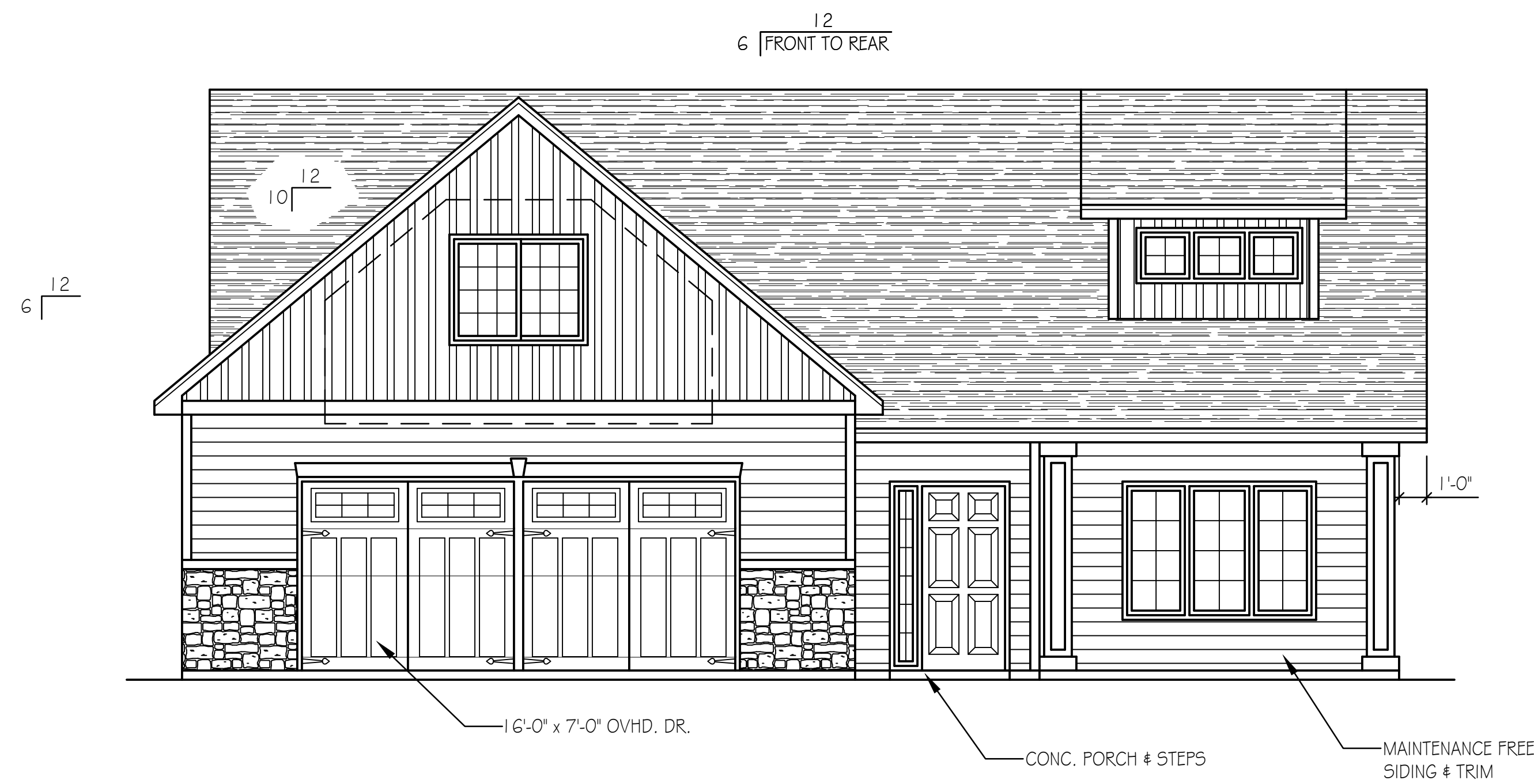
REAR ELEVATION

1/8" = 1'-0"



RIGHT ELEVATION

1/8" = 1'-0"

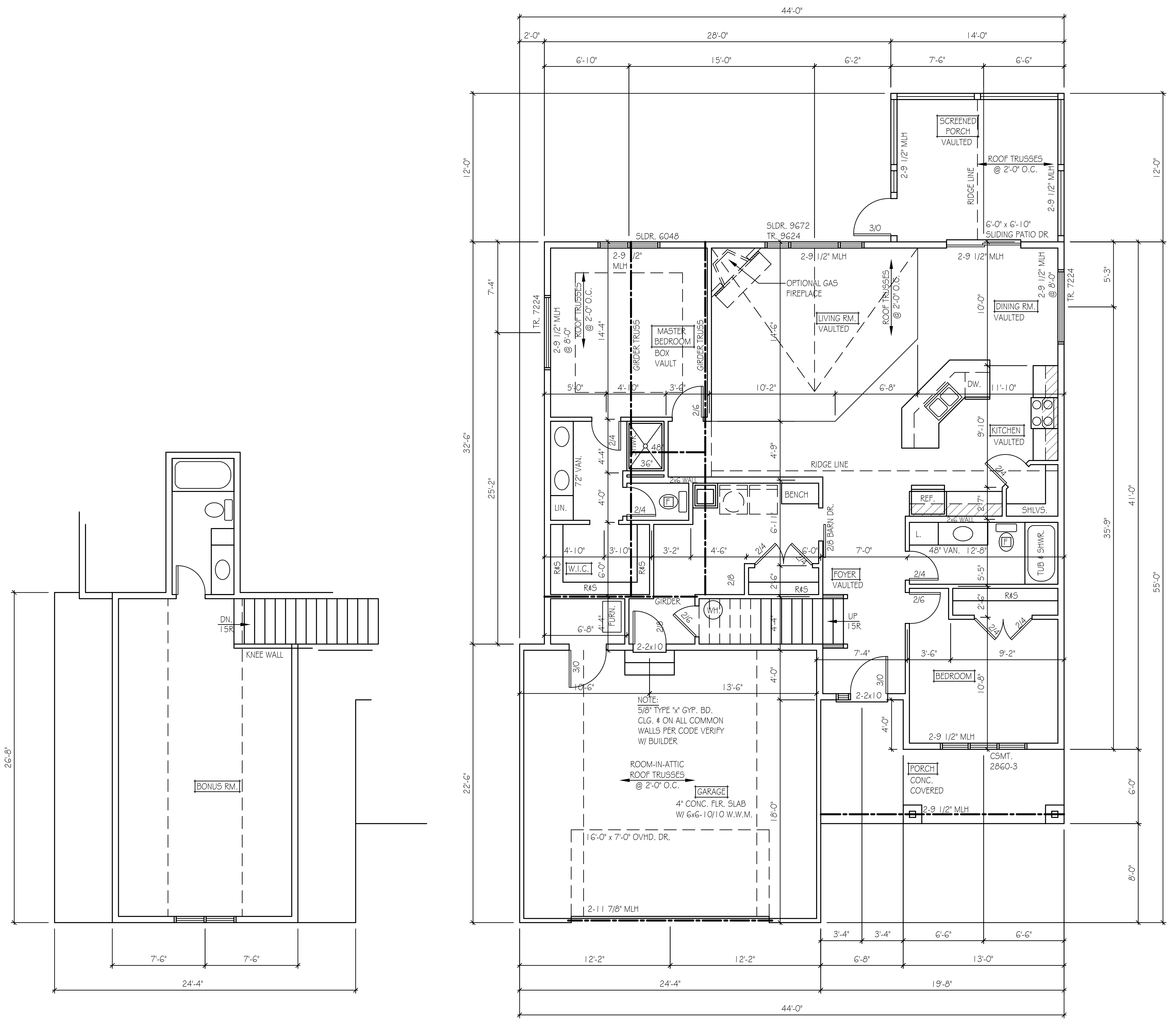


FRONT ELEVATION

1/4" = 1'-0"

**DISCLAIMER**  
 IN PREPARATION OF THIS PLAN EVERY ATTEMPT HAS BEEN MADE TO AVOID MISTAKES. DESIGNER CANNOT GUARANTEE AGAINST HUMAN ERROR. CONTRACTOR TO VERIFY ALL DIMENSIONS AND CONDITIONS AND BE RESPONSIBLE FOR THE SAME. THESE DESIGNS, CONCEPTS AND SPECIFICATIONS ARE INSTRUMENTS OF SERVICE AND AS SUCH REMAIN THE EXCLUSIVE PROPERTY OF COUNTRY LUMBER AND ARE NOT TO BE COPIED WITHOUT THE WRITTEN CONSENT OF COUNTRY LUMBER.

C:\Users\Country Lumber\Desktop\Drawings\2018 Drawings\18.028 DEHN RAMBLER 4.dwg, 3/22/2018 10:08:15 PM, DWG To PDF.pc3



- NOTES:
- 1) HEADERS AT EXTERIOR DOORS & WINDOWS TO BE SIZED BY SUPPLIER
  - 2) SMOKE DETECTORS AS REQD PER CODE
  - 3) SLIDING WINDOWS (UNIT SIZES INDICATED IN INCHES)- VERIFY WINDOW MANUF. W/ BUILDER

**FLOOR PLAN**  
 1518 SFT. (HOUSE)    528 SFT. (GARAGE)  
 1168 SFT. (SCREEN PORCH)

1/4" = 1'-0"